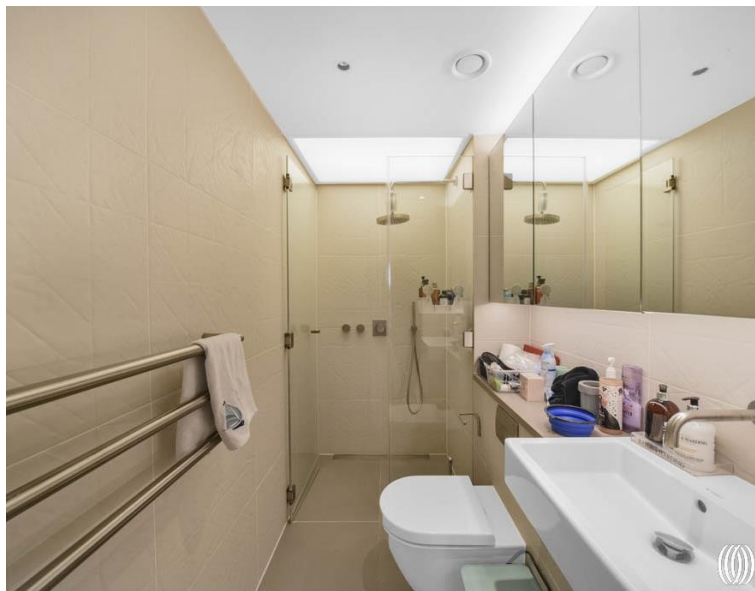




International Way, London E20

£750,000 Leasehold







Description

This 15th floor, 740 Sqft apartment is located within the iconic and contemporary Manhattan Loft Gardens E20. This south-west facing two bedroom loft apartment has been finished to the highest standard with ideal transit links from Stratford underground station offering Central Line, Jubilee Line, DLR, Overground and High-speed rail.

The apartment comprises of a large living space open plan to kitchen, floor to ceiling windows with stunning panoramic views across London. Solid wood flooring throughout with numerous built-in functional storage options. Contemporary bespoke shower room rainfall shower. Spacious master bedroom suite with built in storage and separate dressing area, ensuite bathroom with rainfall shower and bathtub.

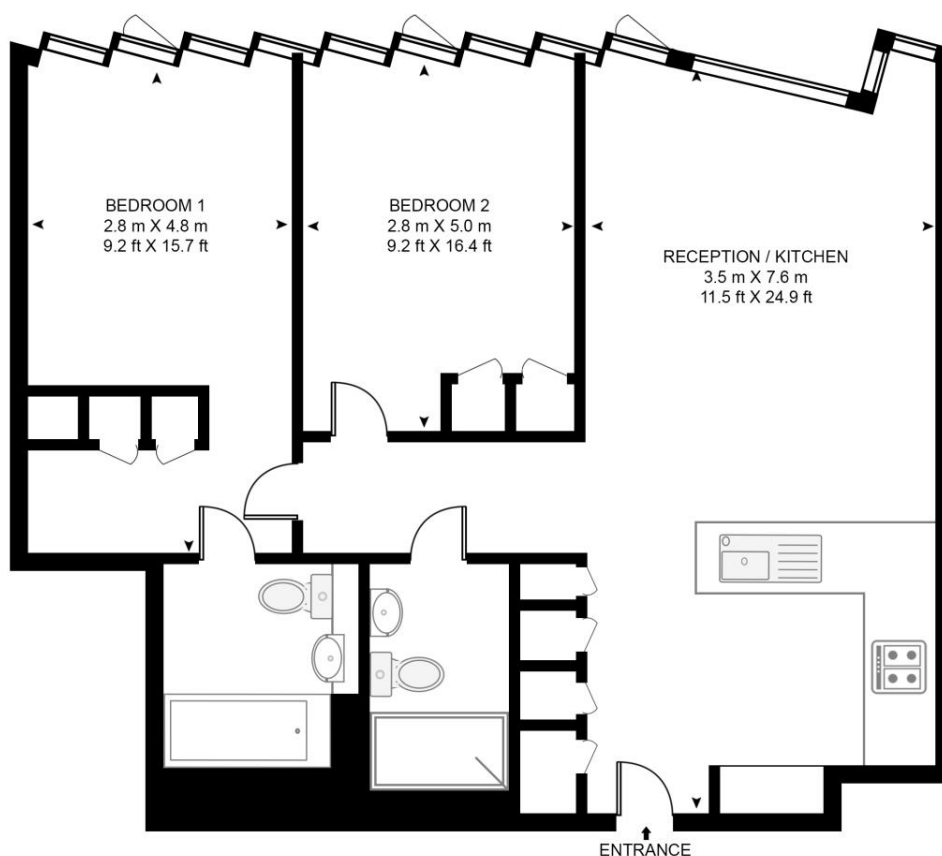
Above the world class hotel 'The Stratford' and from the team that launched The Chiltern Firehouse and St Pancras Renaissance Hotel, Manhattan Loft Gardens involved the same architects as the Burj Khalifa and provides three bars, three sky gardens and two restaurants.

- 2 Bedrooms
- 2 Bathrooms (one en-suite)
- 15th Floor
- Concierge
- Roof Terrace
- Residential Gym
- 0.1 Mile from Stratford International Station
- Approx. 740 sq ft (68.8 sq m)
- EPC: B

Floorplan

740 sq ft | 69 sq m

MANHATTAN LOFT GARDENS, 22 INTERNATION WAY
APPROXIMATE GROSS INTERNAL FLOOR AREA 740 SQ.FT (68.8 SQ.M)



FIFTEENTH FLOOR



This floor plan has been defined by the RICS Code of Measurement. This floor plan and all others are for approximate representative purposes only and upon usage is agreed to as such by the client.

WWW: hdvirtualart.com | TEL: 0203.974.1567 | EMAIL: info@hdvirtualart.com

Stratford
5 Station Street,
London E15 1DA
+4420 3147 1500
Lettingsstratford@eu.jll.com

Urban living, your way.

jll.co.uk/residential

© 2019 Jones Lang LaSalle IP, Inc. All rights reserved. All information contained herein is from sources deemed reliable; however, no representation or warranty is made to the accuracy thereof.

