



**Great Eastern Road, London E15**  
£495,000 Leasehold









## Description

New to the market is this modern one-bedroom apartment (624 sq. ft) with winter garden, positioned on the 18th floor of Stratosphere Tower—one of Stratford's most sought-after and secure residential developments.

This contemporary home features a welcoming entrance hall with generous storage, a sleek open-plan kitchen fitted with premium SMEG appliances and kitchen island, and a spacious living room with room to dine. The property includes a double bedroom with built-in storage and a luxurious, ultra-modern family bathroom.

Residents of Stratosphere Tower enjoy an impressive array of exclusive amenities, including 24-hour concierge service, a well-equipped residents-only gym, an elegant sky lounge, and a spectacular 360-degree roof terrace offering panoramic views over London.

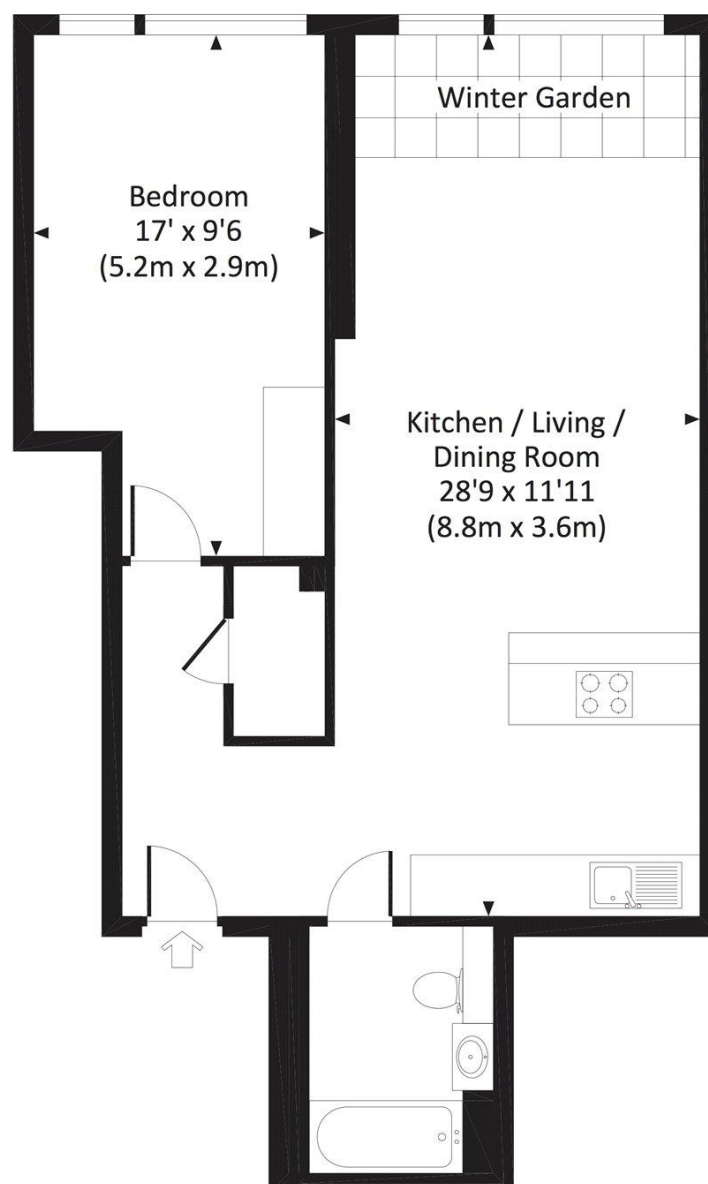
- One Bedroom
- One Bathroom
- 18th floor
- Ultra modern finish
- Residents' gym
- 24 Hour concierge
- 0.1 mile from Stratford station
- Approx. 624 sq ft ( 58 sq m)
- EPC: B

# Floorplan

624 sq ft | 58 sq m

## STRATOSPHERE, GREAT EASTERN ROAD, E15

Approx. gross internal area  
624 Sq Ft. / 58.0 Sq M.



All measurements have been made in accordance with RICS Code of Measuring Practice which are approximate only and only for illustrative purposes. For the avoidance of doubt, Dowling Jones Design shall not be liable for any reliance on these measurements. © 2017 www.dowlingjones.com 020 7610 9933

Stratford  
5 Station Street,  
London E15 1DA  
+4420 3147 1500  
[Lettingsstratford@eu.jll.com](mailto:Lettingsstratford@eu.jll.com)

*Urban living, your way.*

[jll.co.uk/residential](http://jll.co.uk/residential)

© 2019 Jones Lang LaSalle IP, Inc. All rights reserved. All information contained herein is from sources deemed reliable; however, no representation or warranty is made to the accuracy thereof.

