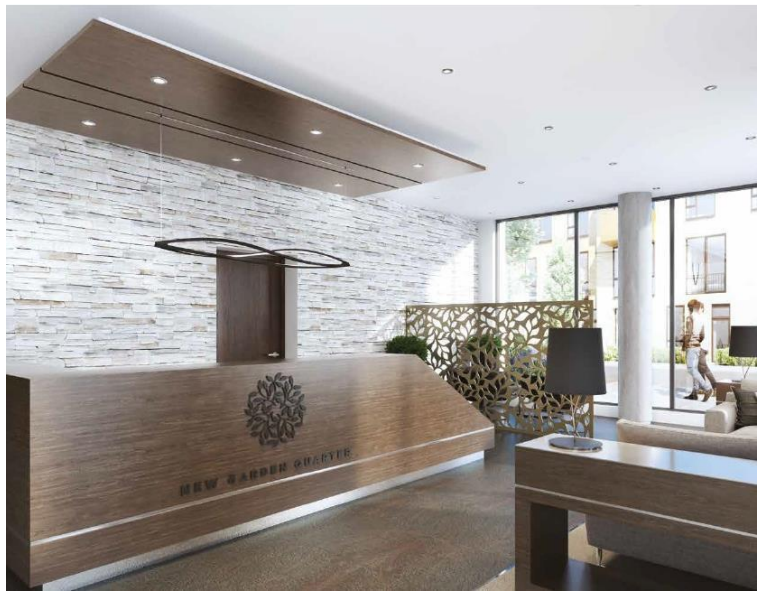




Forrester Way, London E15
£485,000 Leasehold







Description

A fantastic opportunity to purchase this third floor one double bedroom apartment within the renowned New Garden Quarter development. With the added benefit of being south facing and overlooking the incredibly well-kept landscaped gardens, you also have included a private underground parking space, a real rarity for a one bedroom apartment.

This apartment spans close to 600 sq. ft and boasts floor-to-ceiling windows throughout, underfloor heating and includes a private underground parking space. Upon entry you are greeted by a large entrance hall comprising double storage cupboard, a large modern fully fitted bathroom suite and a double bedroom with built in storage. At the end of the corridor you enter the living area with an ultra modern fully integrated kitchen and a bright and airy living room leading to a south-facing balcony where you will enjoy the wonderful views of the developments well maintained gardens.

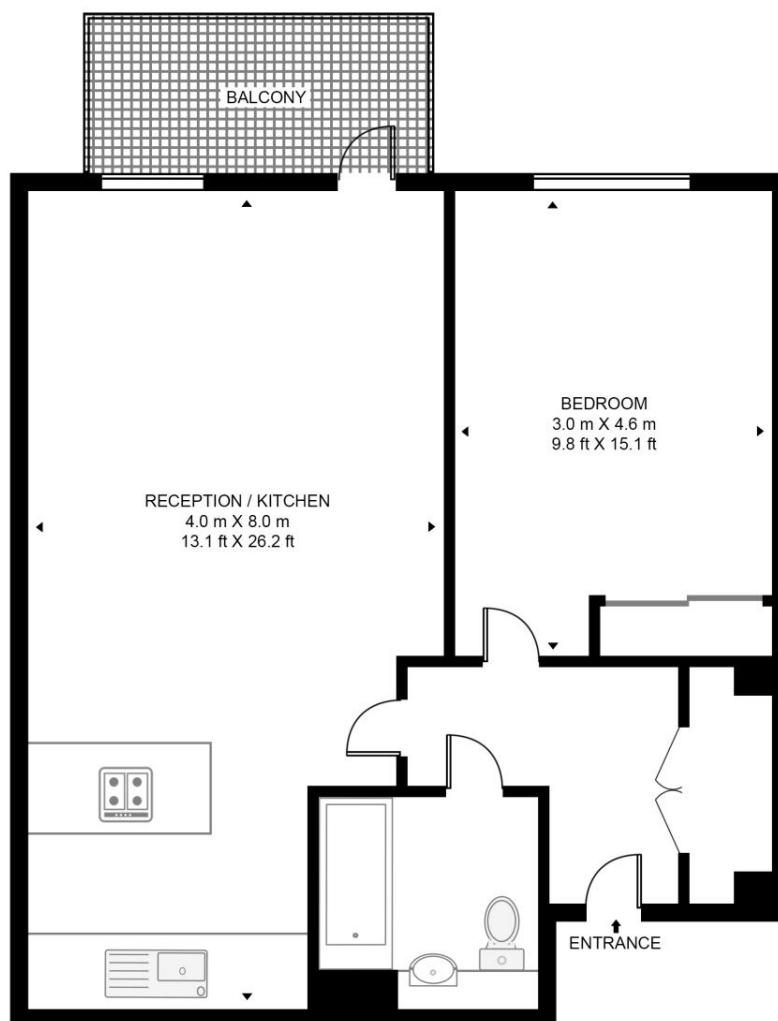
- One Bedroom apartment
- One Bathroom
- Private underground parking space
- Stunning landscaped gardens
- 3rd Floor
- South facing balcony
- Residential gym
- 24 Hour concierge service
- 0.4 miles from Stratford Underground Station
- Walking distance to East Village & Westfield

Floorplan

589 sq ft | 55 sq m

WATERMAN HOUSE, NEW GARDEN QUARTER

APPROXIMATE GROSS INTERNAL FLOOR AREA 589 SQ.FT (54.7 SQ.M)



THIRD FLOOR



This floor plan has been defined by the RICS Code of Measurement. This floor plan and all others are for approximate representative purposes only and upon usage is agreed to as such by the client.

WWW: hdvirtualart.com | TEL: 0203.974.1567 | EMAIL: info@hdvirtualart.com

Stratford
5 Station Street,
London E15 1DA
+4420 3147 1500
Lettingsstratford@eu.jll.com

Urban living, your way.

jll.co.uk/residential

© 2019 Jones Lang LaSalle IP, Inc. All rights reserved. All information contained herein is from sources deemed reliable; however, no representation or warranty is made to the accuracy thereof.

