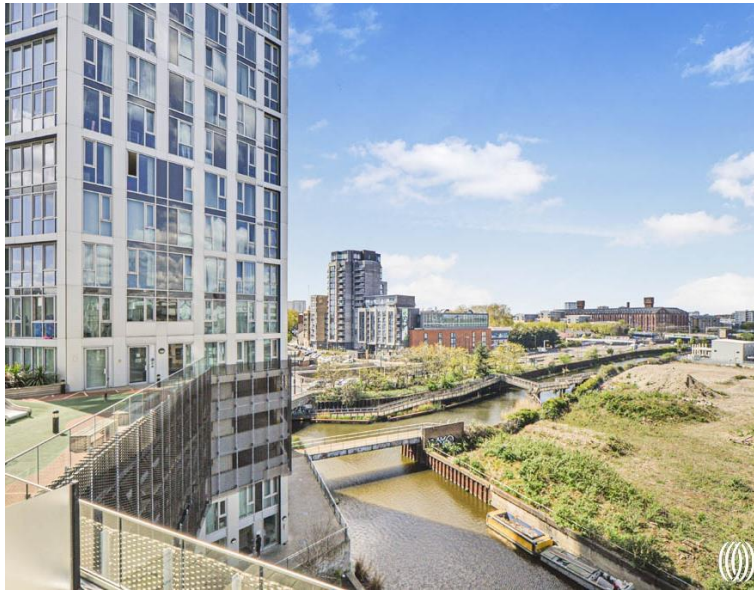


High Street, London E15

Offers In Excess Of £350,000 Leasehold







Description

This large and modern one double bedroom apartment is located on the sixth floor within Stratford City's Sky View Tower, where residents benefit 24hr concierge service, communal roof terrace and residents-only gym facility. This fantastic apartment also has the valued benefit of a private underground parking space.

With close to 550 sq. ft of internal living space and floor to ceiling windows throughout, the apartment comprises entrance hall with 2 large storage cupboards, fully fitted and tiled family bathroom suite and 1 double bedroom with built-in storage. Entering the living quarters you are greeted by an ultra-modern kitchen with integrated appliances with a large L-shape open plan living room overlooking the canal with added space perfect for a work from home station/office.

Residents of Sky View Tower enjoy exclusive access to a range of premium amenities. The 34th-floor garden terrace provides over 880 sq. ft of dramatically landscaped communal space, perfect for relaxation and socializing. Additional facilities include a private lounge, 24-hour concierge service, and a fully equipped resident's gymnasium, ensuring a luxurious and convenient lifestyle.

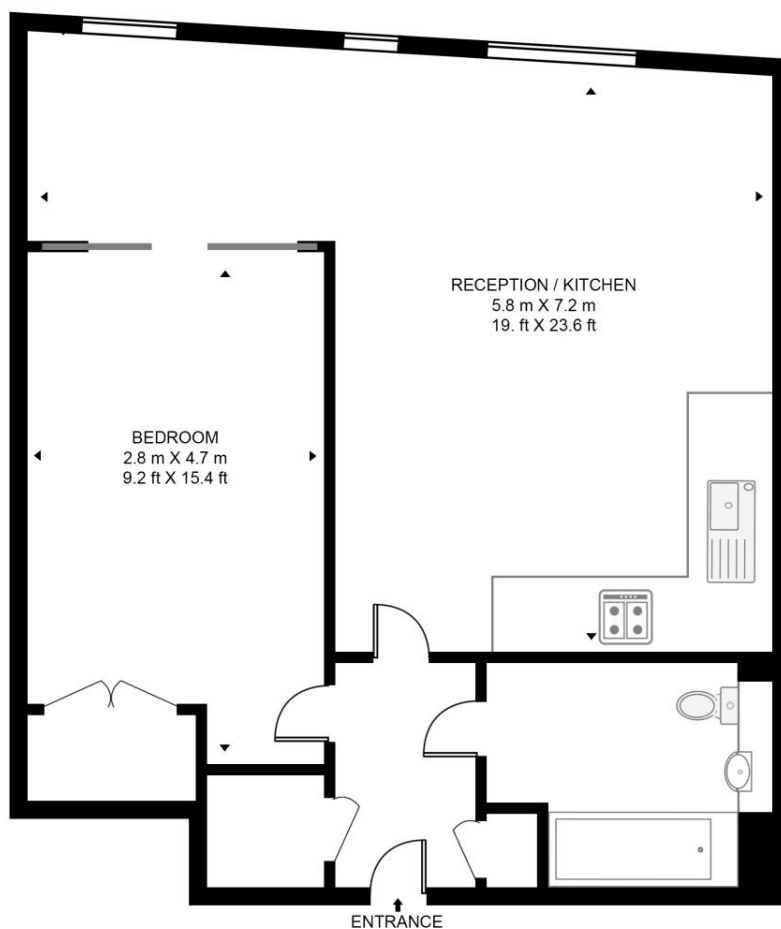
- One bedroom apartment
- 6th Floor with lift access
- Approx. 540 sq. ft (50.2 sq. m)
- 24-hour Concierge Service
- Private underground parking space included
- Communal roof terrace
- Residents-only Gym
- Close to Pudding Mill DLR Station
- Close to Bow Church DLR Station
- EPC Rating: B

Floorplan

540 sq ft | 50 sq m

SKY VIEW TOWER

APPROXIMATE GROSS INTERNAL FLOOR AREA 540 SQ.FT (50.2 SQ.M)



SIXTH FLOOR



HDVA

This floor plan has been defined by the RICS Code of Measurement. This floor plan and all others are for approximate representative purposes only and upon usage is agreed to as such by the client.

WWW: hdvirtualart.com | TEL: 0203.974.1567 | EMAIL: info@hdvirtualart.com

Stratford
5 Station Street,
London E15 1DA
+4420 3147 1500
Lettingsstratford@eu.jll.com

Urban living, your way.

jll.co.uk/residential

© 2019 Jones Lang LaSalle IP, Inc. All rights reserved. All information contained herein is from sources deemed reliable; however, no representation or warranty is made to the accuracy thereof.

