

Glasshouse Gardens, London E20

£675,000 Leasehold







Description

Exclusive to the market is this ultra modern 13th floor, 2 double bedroom 2 bathroom apartment in one of Stratford City's most sought after developments Glasshouse Gardens E20, where residents benefit from a 24hr concierge service, secure intercom entry, lift access and residents gym.

The apartment comprises 2 double bedrooms, 2 bathrooms (en-suite to main), large and ultra modern kitchen with integrated appliances, large living area leading to private, southwest facing balcony with views of the London skyline and ample storage throughout.

Glasshouse Gardens is directly opposite the amenities of Westfield Shopping Centre and a short walk from Stratford Underground Station. Residents benefit from a 24hr concierge service, secure intercom entry, lift access and residents gym. Within a minute's walk of Queen Elizabeth Olympic Park and the East Bank cultural quarter containing UAL and UCL university sites in addition to the V&A and Sadler's Wells East opening in 2025 to offer further cultural and entertainment opportunities.

Years remaining on lease: 991, Service charge: Approx. £4,095pa, Ground rent: £450pa, CT band: D

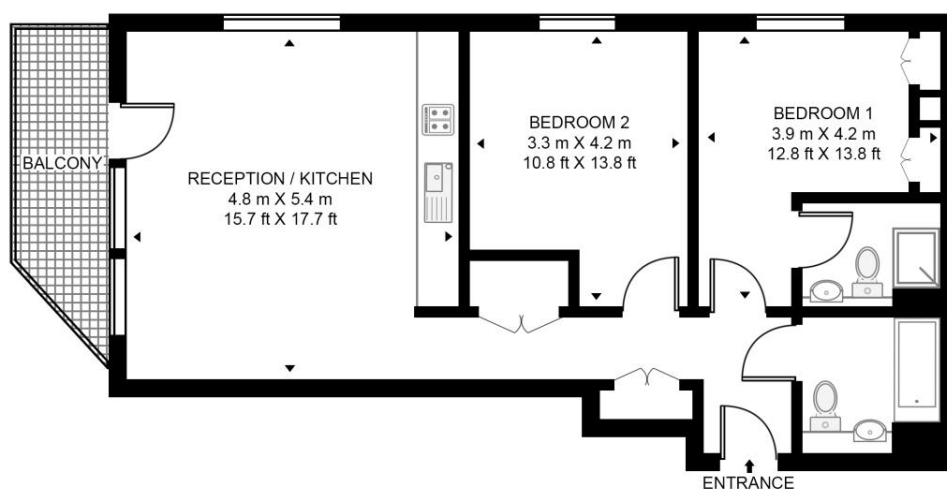
- Two double bedrooms
- Two bathrooms (one en-suite)
- Private Balcony with great views
- Modern finish
- 13th floor
- Leasehold
- Residents' Gym
- 24 Hour Concierge
- Approx. 775sq. ft (72 sq. m)
- 0.3 mile to Stratford Underground Station & Westfield Shopping Centre

Floorplan

775 sq ft | 72 sq m

CASSIA POINT, GLASSHOUSE GARDENS

APPROXIMATE GROSS INTERNAL FLOOR AREA 775 SQ.FT (72 SQ.M)



THIRTEENTH FLOOR



This floor plan has been defined by the RICS Code of Measurement. This floor plan and all others are for approximate representative purposes only and upon usage is agreed to as such by the client.

WWW: hdvirtualart.com | TEL: 0203.974.1567 | EMAIL: info@hdvirtualart.com

Stratford
5 Station Street,
London E15 1DA
+4420 3147 1500
Lettingsstratford@eu.jll.com

Urban living, your way.

jll.co.uk/residential

© 2019 Jones Lang LaSalle IP, Inc. All rights reserved. All information contained herein is from sources deemed reliable; however, no representation or warranty is made to the accuracy thereof.

