

High Street, E15

Offers In Excess Of £450,000 Leasehold







Description

JLL are proud to market this perfect example of a two-bedroom, two-bathroom apartment spanning 936 sq. ft and set on the 16th floor of this modern and secure development, where you will enjoy South-easterly panoramic views of the London skyline.

With floor to ceiling windows throughout to enjoy all views on offer, the apartment comprises entrance hall with large storage cupboard, fully fitted and tiled family bathroom suite, 2 bedrooms (en-suite to master bedroom), ultra-modern kitchen with integrated appliances leading to open plan living room and separate south facing dining area overlooking the famous London skyline.

Residents of Sky View Tower enjoy exclusive access to a range of premium amenities. The 34th-floor garden terrace provides over 880 sq. ft of dramatically landscaped communal space, perfect for relaxation and socializing. Additional facilities include a private lounge, 24-hour concierge service, and a fully equipped resident's gymnasium, ensuring a luxurious and convenient lifestyle.

Sky View Tower is conveniently located a mere 0.3 mile walk to Pudding Mill Lane DLR where you are a 10-minute journey dire

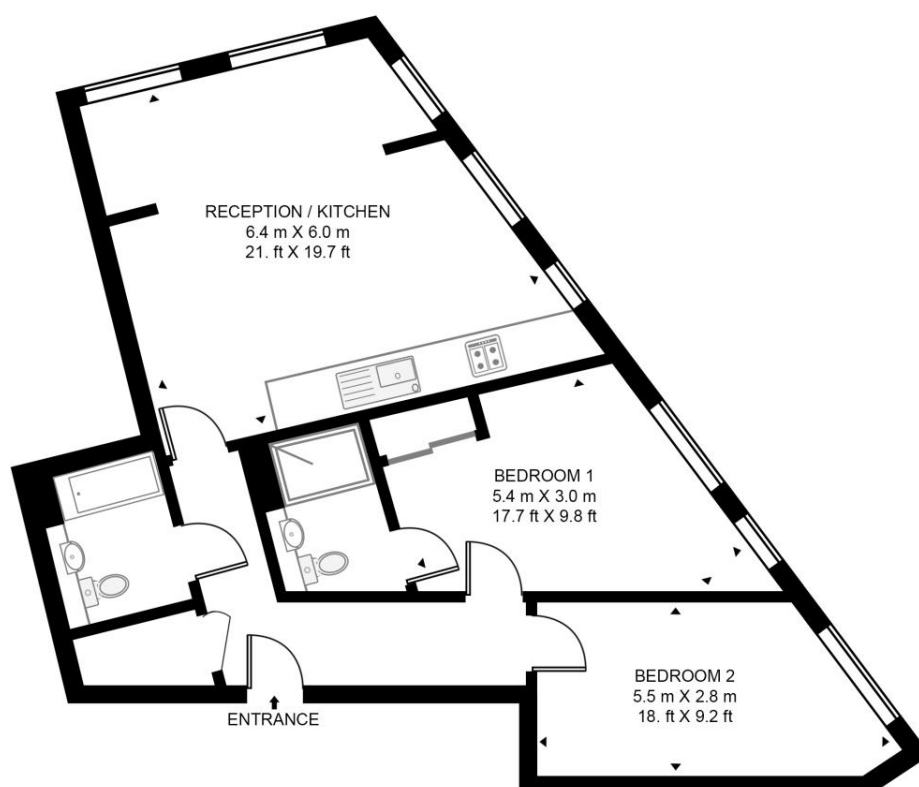
- 2 Bedroom apartment
- 2 Bathrooms (one en-suite)
- 6th Floor with lift access
- Approx 936 sq. ft (87 sq. m)
- 24-hour Concierge Service
- Chain-free
- South-easterly aspect
- Communal roof terrace
- Residents-only Gym
- Close to Pudding Mill DLR Station

Floorplan

936 sq ft | 87 sq m

SKY VIEW TOWER

APPROXIMATE GROSS INTERNAL FLOOR AREA 936 SQ.FT (87 SQ.M)



SIXTEENTH FLOOR



This floor plan has been defined by the RICS Code of Measurement. This floor plan and all others are for approximate representative purposes only and upon usage is agreed to as such by the client.
WWW: hdvirtualart.com | TEL: 0203.974.1567 | EMAIL: info@hdvirtualart.com

Stratford
5 Station Street,
London E15 1DA
+4420 3147 1500
Lettingsstratford@eu.jll.com

Urban living, your way.

jll.co.uk/residential

© 2019 Jones Lang LaSalle IP, Inc. All rights reserved. All information contained herein is from sources deemed reliable; however, no representation or warranty is made to the accuracy thereof.

