



Great Eastern Road, London E15
£585,000 Leasehold







Description

JLL welcomes to the market this stunning and incredibly well maintained two double bedroom two bathroom apartment within one of Stratford's most popular and luxury developments Legacy Tower E15, where you are less than a minutes walk to Stratford Station and Westfield.

This exceptional property is located on the 2nd floor and offers a generous 865 square feet of living space. The apartment boasts ultra-modern finishes throughout, featuring an inviting dual aspect open-plan kitchen/living area complete with integrated appliances leading to a large south easterly facing private balcony, two large double bedroom with built-in storage and en-suite bathroom to master bedroom, modern family bathroom suite and large storage cupboard. One of the apartment's highlights is its outlook, providing wonderful and panoramic views of the local area.

Residents of Legacy Tower benefit from a range of amenities, including a 24 hour concierge service, a fully equipped gymnasium and bike storage. Legacy Tower itself is a stunning 31-storey development, truly a landmark in its own right. Its prime location ensures residents can enjoy dual aspect views of both the Queen Elizabeth Olympic Park and Westfield's Stratford City.

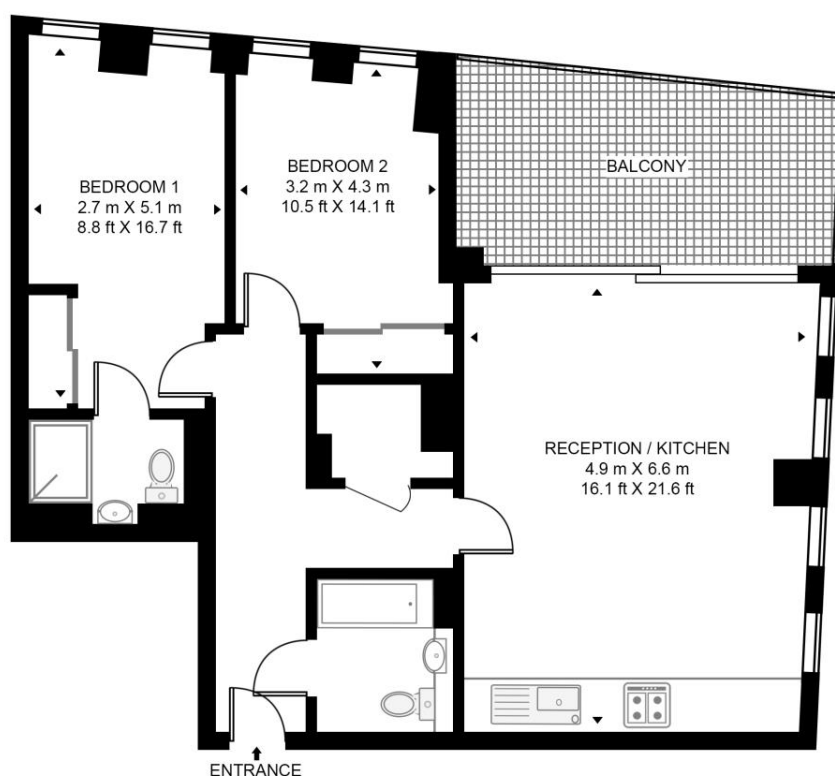
- 2 Bedrooms
- 2 Bathrooms (one en-suite)
- 2nd Floor
- Balcony
- Residential Gym
- 24 Hour Concierge
- Ultra modern finish
- 0.1 mile from Stratford Underground Station
- Approx. 865 sq ft (80.4 sq m)
- EPC: B

Floorplan

865 sq ft | 80 sq m

LEGACY TOWER

APPROXIMATE GROSS INTERNAL FLOOR AREA 865 SQ.FT (80.4 SQ.M)



SECOND FLOOR



This floor plan has been defined by the RICS Code of Measurement. This floor plan and all others are for approximate representative purposes only and upon usage is agreed to as such by the client.

WWW: hdvirtualart.com | TEL: 0203.974.1567 | EMAIL: info@hdvirtualart.com

Stratford
5 Station Street,
London E15 1DA
+4420 3147 1500
Lettingsstratford@eu.jll.com

Urban living, your way.

jll.co.uk/residential

© 2019 Jones Lang LaSalle IP, Inc. All rights reserved. All information contained herein is from sources deemed reliable; however, no representation or warranty is made to the accuracy thereof.

