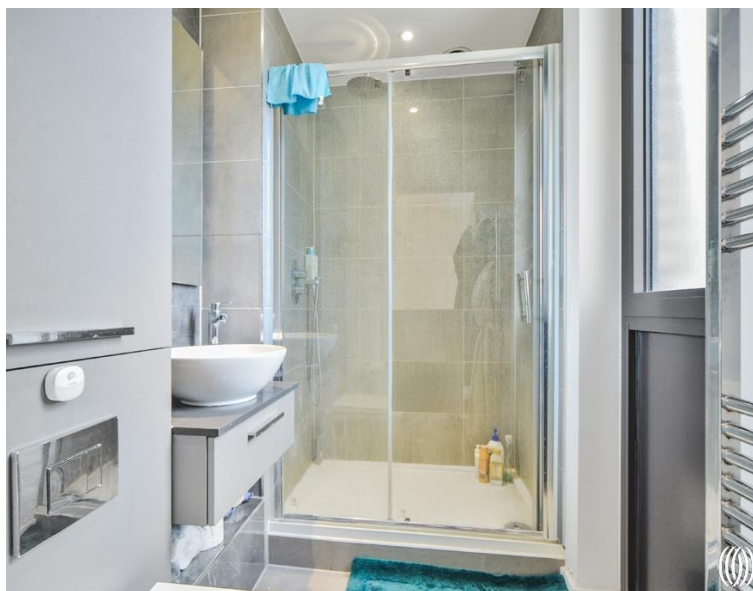




# Forrester Way, London E15

Asking price £715,000 Leasehold









## Description

Immaculate and ultra modern three double bedroom two bathroom apartment situated on the 2nd floor within New Garden Quarter E15, a beautifully landscaped and secure development walking distance to Stratford Underground Station.

Maintained to the highest of standard and offering close to 1100 square feet, the property comprises a high specification open-plan kitchen/living area, 3 double bedrooms with built-in wardrobes, a private balcony and two bathrooms (including an en suite). The apartment also benefits floor to ceiling windows throughout, underfloor heating and an unbelievable amount of storage space.

New Garden Quarter boasts a beautiful 2-acre landscaped garden square, 24-hr concierge service, residents' gym, bicycle storage and an on-site nursery. You are also conveniently located a stone's throw from the famous East Village/Chobham Manor for an abundance of cafes, restaurants and shops, world-class sporting facilities as well as easy access to Westfield. Stratford Station and Stratford International are a 0.5 mile walk with connections from TFL, Crossrail and National Rail including: St. Pancras International & Kings Cross, Stratford International DLR station & Canary Wharf.

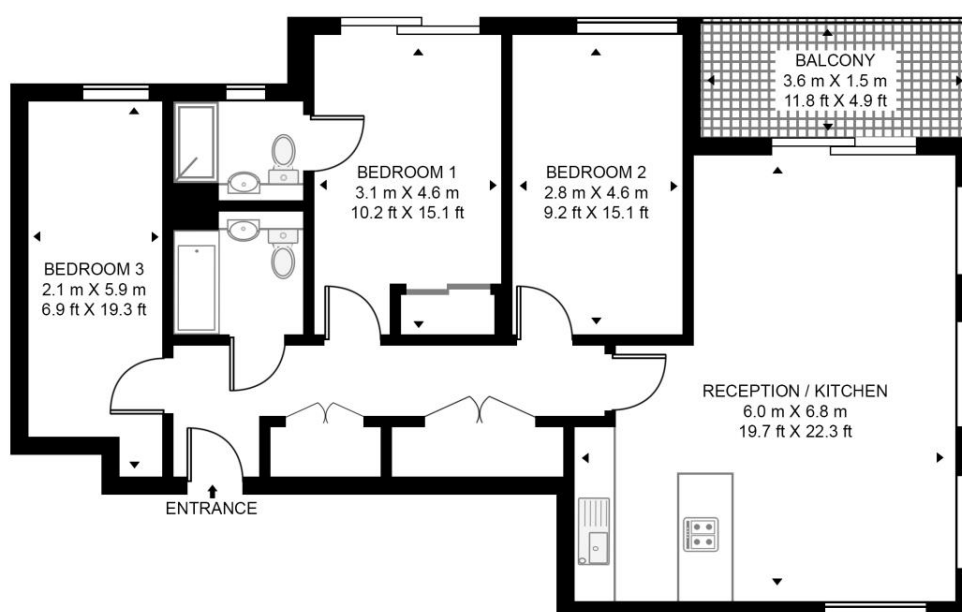
- Three bedrooms
- Two bathrooms (one en-suite)
- Concierge service
- Residential gymnasium
- Private balcony
- Underfloor heating throughout
- Approx 1054 sq.ft (97.9 sq.m)
- Short walk to Stratford Underground Station
- Short walk to Westfield's Stratford City
- EPC Rating: B

# Floorplan

1,054 sq ft | 98 sq m

## MERCHANTS HOUSE, 14 FORRESTER WAY

APPROXIMATE GROSS INTERNAL FLOOR AREA 1054 SQ.FT (97.9 SQ.M)



### SECOND FLOOR



**HDVA**

This floor plan has been defined by the RICS Code of Measurement. This floor plan and all others are for approximate representative purposes only and upon usage is agreed to as such by the client.

WWW: [hdvirtualart.com](http://hdvirtualart.com) | TEL: 0203.974.1567 | EMAIL: [info@hdvirtualart.com](mailto:info@hdvirtualart.com)

Stratford  
5 Station Street,  
London E15 1DA  
+4420 3147 1500  
[Lettingsstratford@eu.jll.com](mailto:Lettingsstratford@eu.jll.com)

*Urban living, your way.*

[jll.co.uk/residential](http://jll.co.uk/residential)

© 2019 Jones Lang LaSalle IP, Inc. All rights reserved. All information contained herein is from sources deemed reliable; however, no representation or warranty is made to the accuracy thereof.

