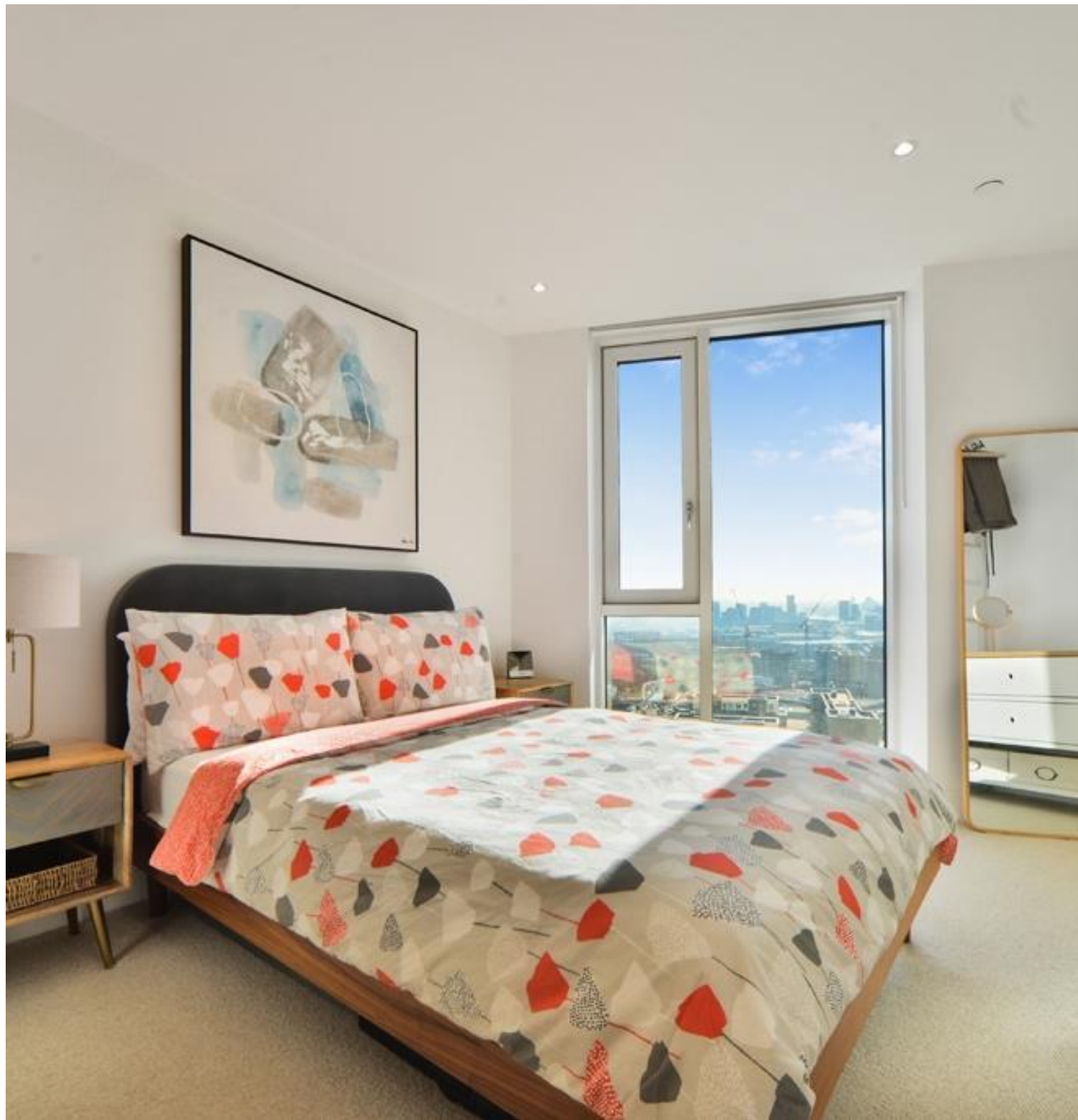


High Street, London E15

Asking price £510,000 Leasehold







Description

Exclusive to the market, a stunning two-bedroom, two-bathroom apartment in Sky View Tower has just become available. Perfectly positioned on the 24th floor of this modern and secure development, this property offers breathtaking panoramic south-western views of London's iconic skyline.

The apartment features floor-to-ceiling windows throughout, allowing residents to fully appreciate the spectacular vistas from every angle. Upon entering, you'll find a welcoming entrance hall with ample double storage. The living space boasts a fully fitted and tiled family bathroom suite, two well-appointed bedrooms (with the master bedroom benefiting from an en-suite), and an ultra-modern kitchen complete with integrated appliances. The open-plan living room flows seamlessly into a separate south-facing dining area, both offering uninterrupted views of London's famous skyline.

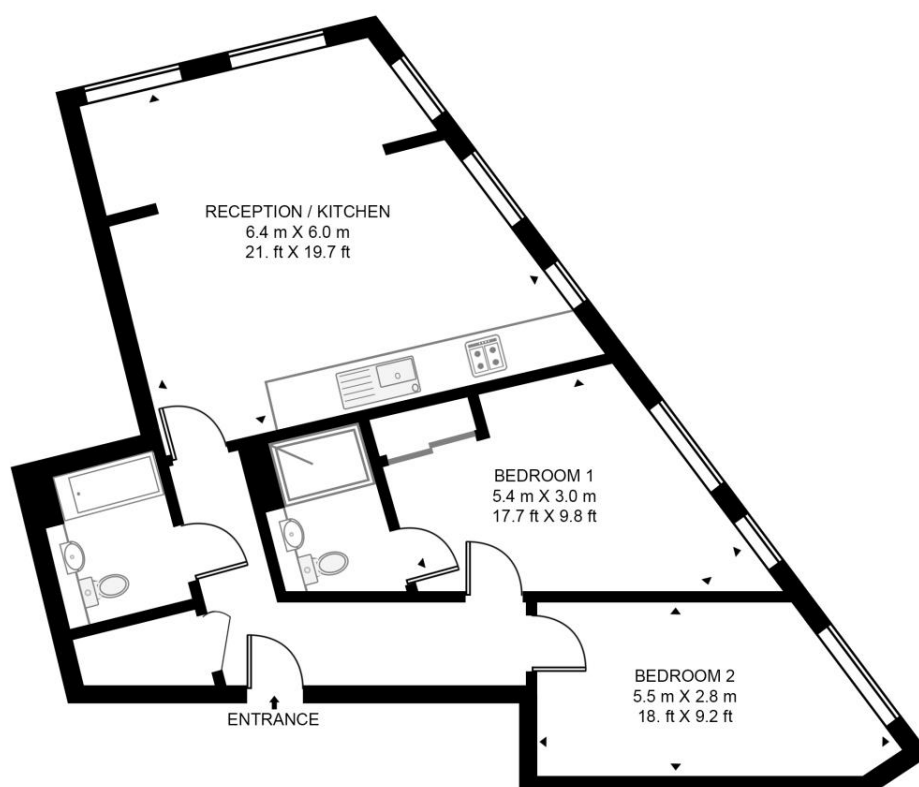
- 2 Bedrooms
- 2 Bathrooms (one en-suite)
- 24 hour Concierge Service
- Lift access
- High floor with stunning views
- Communal roof terrace
- Residents Gym
- Easy access to Westfield's Stratford City
- Close to Pudding Mill DLR Station
- Close to Bow Church DLR Station

Floorplan

sq ft | sq m

SKY VIEW TOWER

APPROXIMATE GROSS INTERNAL FLOOR AREA 936 SQ.FT (87 SQ.M)



TWENTY FOURTH FLOOR



This floor plan has been defined by the RICS Code of Measurement. This floor plan and all others are for approximate representative purposes only and upon usage is agreed to as such by the client.
WWW: hdvirtualart.com | TEL: 0203.974.1567 | EMAIL: info@hdvirtualart.com

Stratford
5 Station Street,
London E15 1DA
+4420 3147 1500
Lettingsstratford@eu.jll.com

Urban living, your way.

jll.co.uk/residential

© 2019 Jones Lang LaSalle IP, Inc. All rights reserved. All information contained herein is from sources deemed reliable; however, no representation or warranty is made to the accuracy thereof.

