



## Forrester Way, London E15

Asking price £875,000 Leasehold









## Description

Simply stunning three bedroom duplex sky villa spanning over 1200 sq. ft with wrap-around balcony and two private roof terraces within the New Garden Quarter development. Boasting a beautifully 2 acre landscaped garden square, private green spaces, concierge and residents gym. The property also boasts floor-to-ceiling windows and underfloor heating throughout.

Apartments finished to a high specification. Open plan living room and kitchen, high specification kitchens include handle-less fitted units, engineered stone worktops, glass splash backs and fully integrated appliances. Bathrooms and en suite shower rooms offer bespoke cabinetry and ceramic tiling, fitted wardrobes to master bedroom and under floor heating throughout.

Arranged around a beautifully landscaped 2 acre garden square, New Garden Quarter benefits from facilities that include a 24 hour concierge, residents' gymnasium and nursery, as well as the extensive facilities available in fast-growing Stratford itself. Located next to Queen Elizabeth Olympic Park offering an abundance of cafes, restaurants and shops, world-class sporting facilities, easy access to Westfield and just an 8 minute walk to Stratford Underground station for easy access to Liverpool Street, Canary Wharf and Bank.

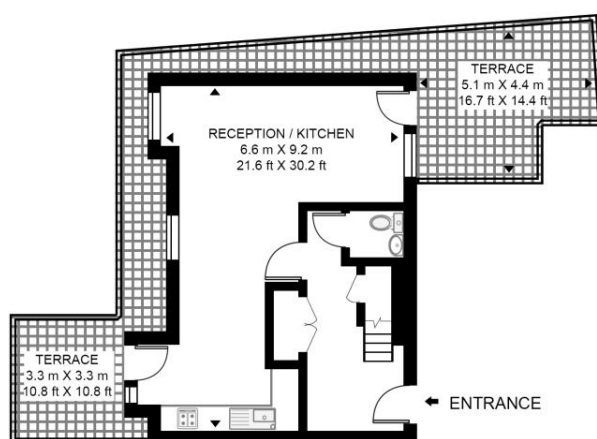
- 3 Bedrooms
- 2 Bathrooms
- Sky Villa
- Two Private Terraces with wrap-around balcony
- Residents Gym
- Landscaped communal gardens
- 24 Hour Concierge
- Option to rent a parking space
- 0.4 miles from Stratford Underground Station
- Approx. 1204 sq. ft (111.9 sq. m)

# Floorplan

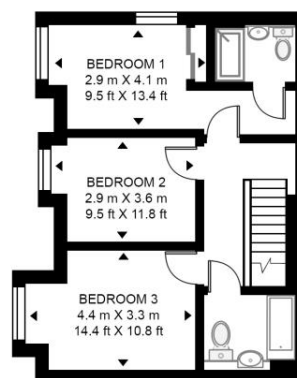
1,204 sq ft | 112 sq m

## AVENIR HOUSE

APPROXIMATE GROSS INTERNAL FLOOR AREA 1204 SQ.FT (111.9 SQ.M)



SIXTH FLOOR



SEVENTH FLOOR



This floor plan has been defined by the RICS Code of Measurement. This floor plan and all others are for approximate representative purposes only and upon usage is agreed to as such by the client.

WWW: [hdvirtualart.com](http://hdvirtualart.com) | TEL: 0203.974.1567 | EMAIL: [info@hdvirtualart.com](mailto:info@hdvirtualart.com)

Stratford  
5 Station Street,  
London E15 1DA  
+4420 3147 1500  
[Lettingsstratford@eu.jll.com](mailto:Lettingsstratford@eu.jll.com)

*Urban living, your way.*

[jll.co.uk/residential](http://jll.co.uk/residential)

© 2019 Jones Lang LaSalle IP, Inc. All rights reserved. All information contained herein is from sources deemed reliable; however, no representation or warranty is made to the accuracy thereof.

