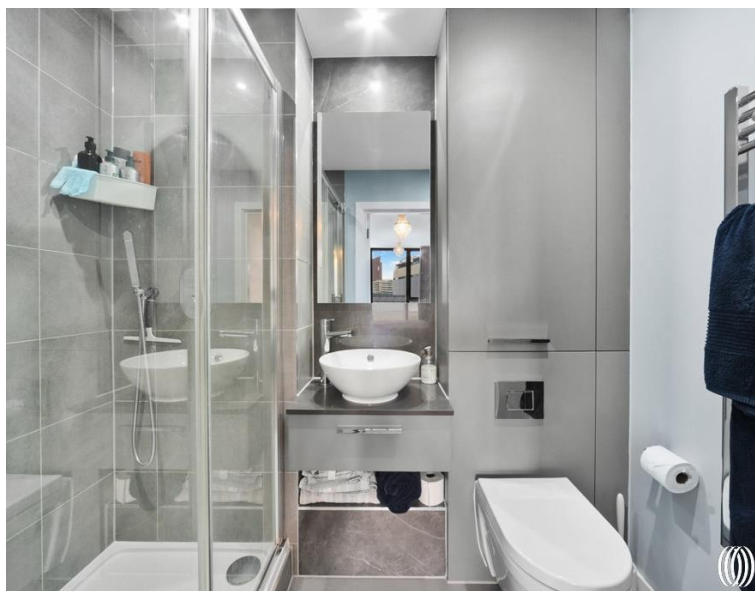




# Forrester Way, London E15

Asking price £850,000 Leasehold









## Description

Exclusive to the market, a truly stunning three bedroom two bathroom split level apartment boasting a 730 square footage private terrace area. The property has recently been completely re-painted and decorated throughout and also offers a private underground parking space.

Comprising large entrance hall with three large storage cupboards, guest W/C, over 400 sq. ft of living space where you will enjoy an ultra modern and fully integrated kitchen with island leading to what can only be described as an unbelievable private terrace area spanning just over 730 sq. ft. Upstairs you will enjoy a large landing worthy of a home office space, three double bedrooms with built in storage and en-suite to principle bedroom and modern fully tiled family bathroom suite.

Residents of New Garden Quarter enjoy exclusive access to a host of luxurious amenities, including a beautifully landscaped 2-acre garden square and private green spaces. The building provides a 24-hour concierge and parcel service for your convenience, a residents-only gym and secure bicycle storage.

Nestled next to the expansive Queen Elizabeth Park, this prime location also offers easy access to Westfield Stratford City.

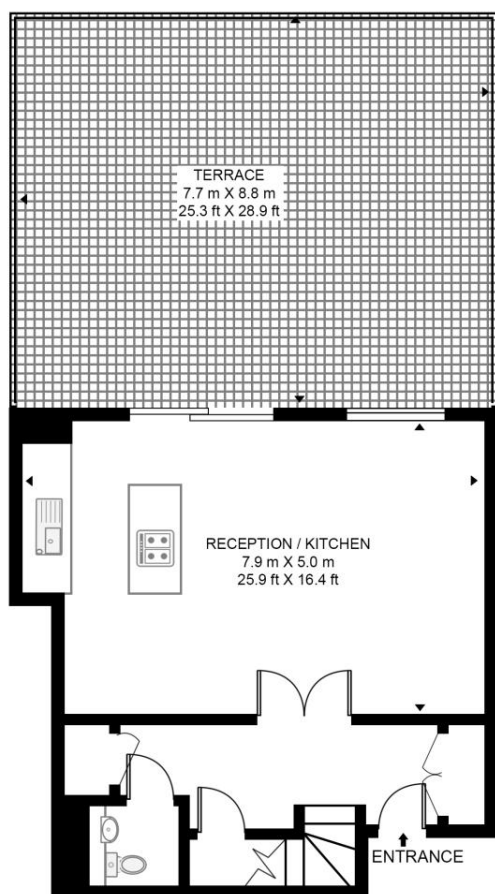
- 3 Bedrooms
- 2 Bathrooms (one en-suite)
- Large private terrace
- Guest WC
- Residents' Gym
- Landscaped communal gardens
- 24 Hour Concierge
- Private underground parking space
- 0.4 miles from Stratford Underground Station
- Approx. 1167sq. ft (108.5 sq. m)

# Floorplan

1,167 sq ft | 108 sq m

## HAWTHORN HOUSE, NEW GARDEN QUARTER

APPROXIMATE GROSS INTERNAL FLOOR AREA 1167 SQ.FT (108.5 SQ.M)



FIRST FLOOR



SECOND FLOOR



This floor plan has been defined by the RICS Code of Measurement. This floor plan and all others are for approximate representative purposes only and upon usage is agreed to as such by the client.

WWW: [hdvirtualart.com](http://hdvirtualart.com) | TEL: 0203.974.1567 | EMAIL: [info@hdvirtualart.com](mailto:info@hdvirtualart.com)

Stratford  
5 Station Street,  
London E15 1DA  
+4420 3147 1500  
[Lettingsstratford@eu.jll.com](mailto:Lettingsstratford@eu.jll.com)

*Urban living, your way.*

[jll.co.uk/residential](http://jll.co.uk/residential)

© 2019 Jones Lang LaSalle IP, Inc. All rights reserved. All information contained herein is from sources deemed reliable; however, no representation or warranty is made to the accuracy thereof.

