

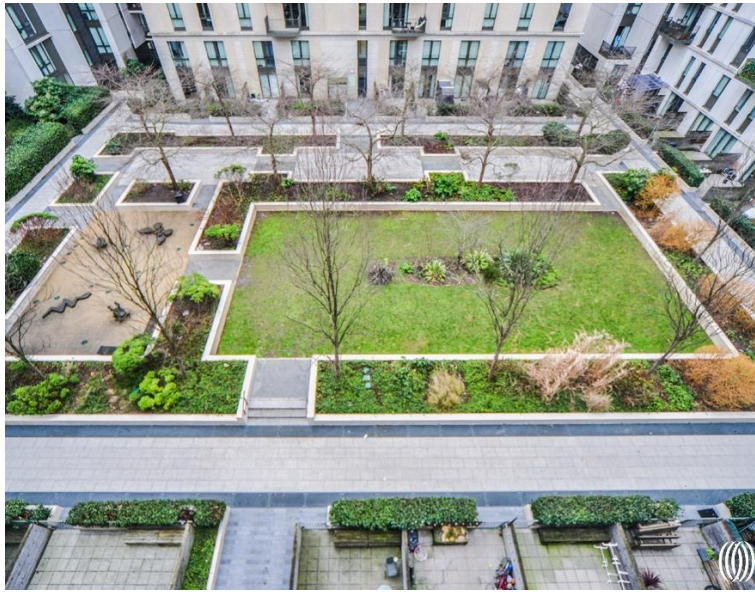
## Napa Close, London E20

Asking price £625,000 Leasehold









## Description

Discover an impressive two-bedroom, two-bathroom apartment in the vibrant East Village. This modern 850 sq. ft (79 sq. m) home features a desirable layout and a private balcony overlooking a private internal garden.

Step into a welcoming reception area with ample built-in storage. The contemporary kitchen with built-in premium appliances and generous counter space. The spacious living and dining area opens seamlessly onto the South-facing balcony, ideal for relaxation and entertaining. Both bedrooms are generously sized, complemented by a modern family bathroom.

Located in a prime position, this property offers easy access to Queen Elizabeth Park, Westfield shopping centre, and excellent transport links via Stratford International station. East Village's lively atmosphere is complemented by a variety of independent eateries and bars. Residents enjoy nearby amenities including a gym and Sainsbury's supermarket. For families, the outstanding Ofsted-rated Chobham Academy is within the catchment area, making this apartment an enticing opportunity for modern urban living.

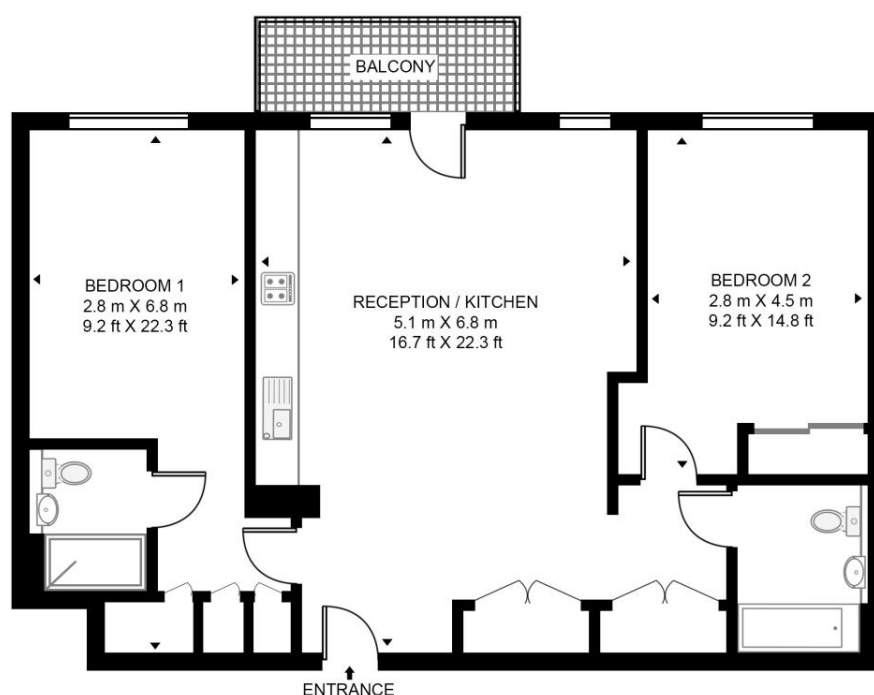
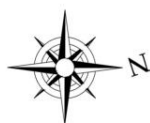
- Two bedrooms
- Two bathrooms (one en-suite)
- Balcony
- 6th Floor
- Approx 850 sq. ft (79 sq. m)
- Option to rent parking space in gated car park
- Bicycle storage
- 0.6 miles from Stratford station and Westfield shopping centre
- Within minutes of Queen Elizabeth Olympic Park
- EPC Rating B

# Floorplan

850 sq ft | 79 sq m

## FESTIVE MANSIONS

APPROXIMATE GROSS INTERNAL FLOOR AREA 850 SQ.FT (79 SQ.M)



This floor plan has been defined by the RICS Code of Measurement. This floor plan and all others are for approximate representative purposes only and upon usage is agreed to as such by the client.  
WWW: [hdvirtualart.com](http://hdvirtualart.com) | TEL: 0203.974.1567 | EMAIL: [info@hdvirtualart.com](mailto:info@hdvirtualart.com)

Stratford  
5 Station Street,  
London E15 1DA  
+4420 3147 1500  
[Lettingsstratford@eu.jll.com](mailto:Lettingsstratford@eu.jll.com)

*Urban living, your way.*

[jll.co.uk/residential](http://jll.co.uk/residential)

© 2019 Jones Lang LaSalle IP, Inc. All rights reserved. All information contained herein is from sources deemed reliable; however, no representation or warranty is made to the accuracy thereof.

