

Glasshouse Gardens, London E20

Asking price £685,000 Leasehold







Description

Opportunity to purchase this spacious 2 bedroom 2 bathroom apartment within Glasshouse Gardens E20, arguably the most renowned and sought after development Stratford City has to offer.

Situated on the 9th floor and comprising of approximately 777 square feet, the property boasts an open kitchen/living area with integrated appliances, floor-to-ceiling-windows allowing plenty of light, private balcony overlooking the iconic Olympic legacy landmarks, two bedrooms with two bathrooms (including an en suite).

The development is directly opposite the amenities of Westfield Shopping Centre and a short walk from Stratford Underground Station which is now one of London's busiest and well connected stations. Residents will further benefit from access to a 24hr concierge service, lift access, high speed broadband and close to local amenities such as Westfield's, Stratford City.

Years remaining on lease: 992, Service charge: TBC, Ground rent £450pa, Council tax band: D

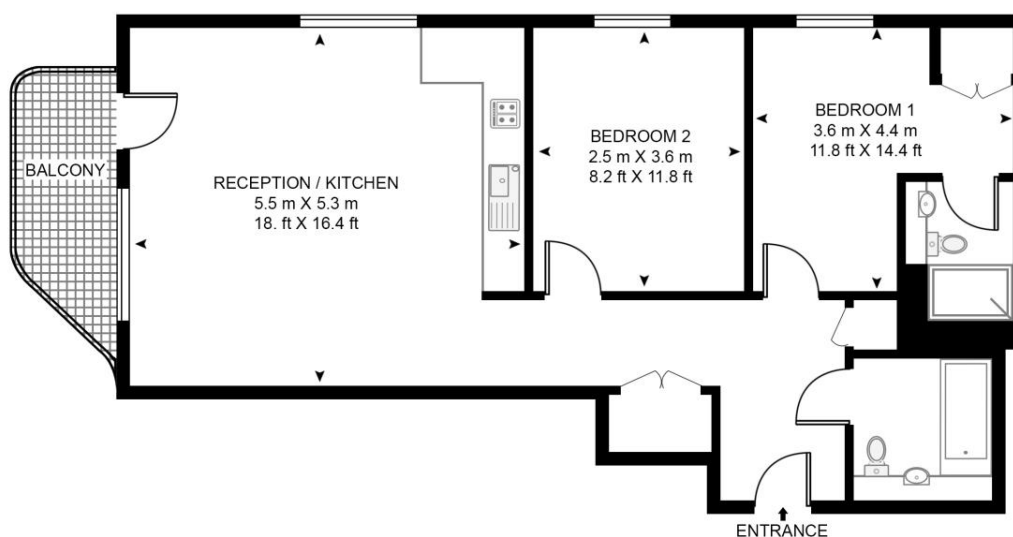
- Two bedrooms
- Two bathrooms (one en-suite)
- 9th Floor with lift access
- Private Balcony
- 24-hour Concierge Service
- Residents only Gym
- Residents landscaped Garden
- Moments to Stratford Westfield
- 5 min walk to Stratford Station
- pprox. 777 sq ft (72.2 sqm)

Floorplan

775 sq ft | 72 sq m

LANTANA HEIGHTS

APPROXIMATE GROSS INTERNAL FLOOR AREA 777 SQ.FT (72.2 SQ.M)



This floor plan has been defined by the RICS Code of Measurement. This floor plan and all others are for approximate representative purposes only and upon usage is agreed to as such by the client.

WWW: hdvirtualart.com | TEL: 0203.974.1567 | EMAIL: info@hdvirtualart.com

Stratford
5 Station Street,
London E15 1DA
+4420 3147 1500
Lettingsstratford@eu.jll.com

Urban living, your way.

jll.co.uk/residential

© 2019 Jones Lang LaSalle IP, Inc. All rights reserved. All information contained herein is from sources deemed reliable; however, no representation or warranty is made to the accuracy thereof.

