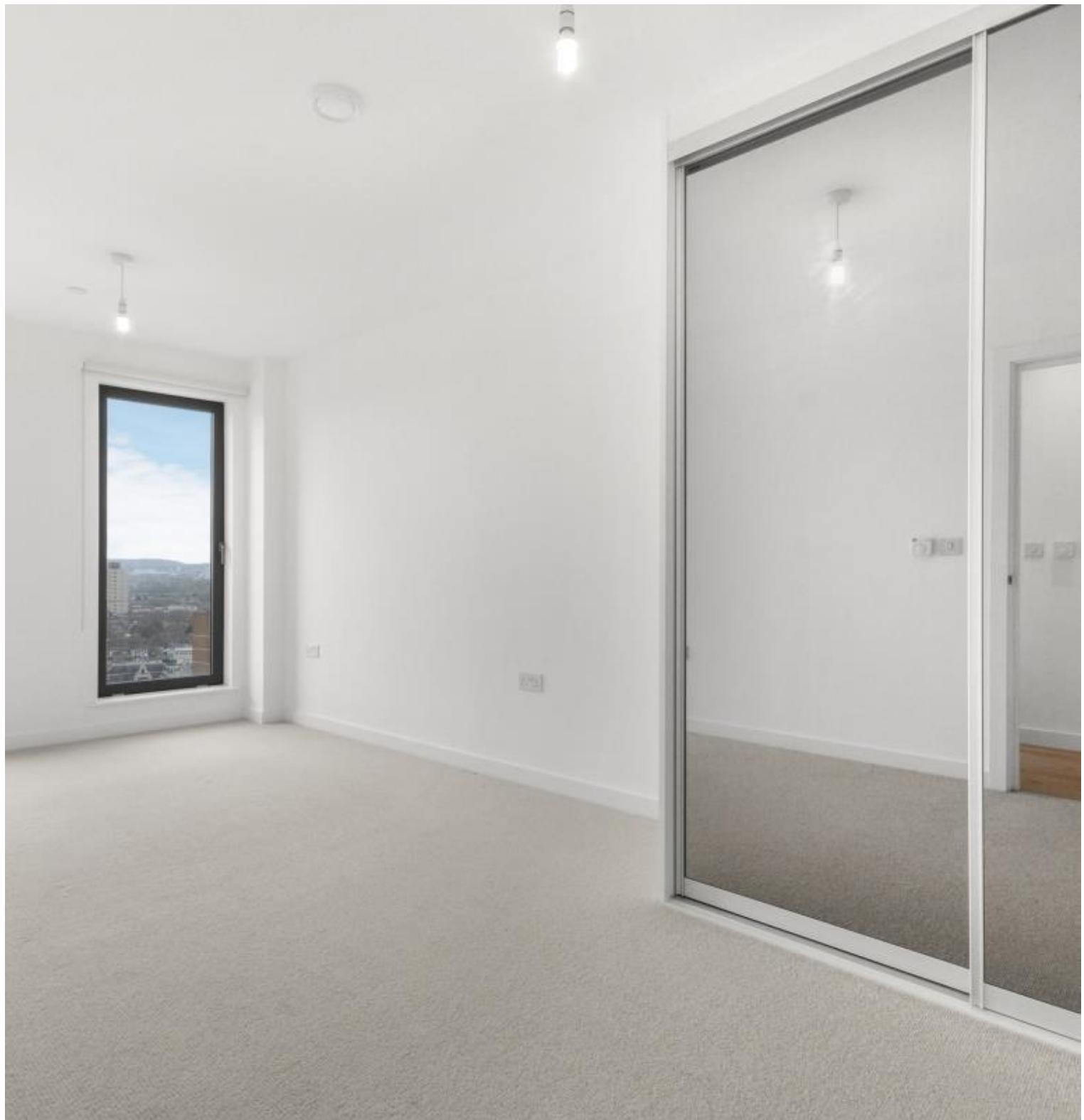




Great Eastern Road, London E15

Asking price £495,000 Leasehold







Description

Opportunity to purchase a 1 double bedroom apartment within one of Stratford's most popular and luxury developments Legacy Tower, E15 where you are less than a minutes walk to Stratford Station and Westfield.

This exceptional property is located on the 19th floor and offers a generous 617 square feet of living space. The apartment boasts ultra-modern finishes throughout, featuring an inviting open-plan kitchen/living area complete with integrated appliances, large double bedroom with built-in storage and modern bathroom suite. One of the apartment's highlights is its outlook, providing breath-taking panoramic views of the London Skyline.

Residents of Legacy Tower benefit from a range of amenities, including a 24 hour concierge service, a fully equipped gymnasium and bike storage.

Legacy Tower itself is a stunning 31-storey development, truly a landmark in its own right. Its prime location ensures residents can enjoy dual aspect views of both the Queen Elizabeth Olympic Park and Westfield's Stratford City, adding a touch of exclusivity to the living experience. Additionally, Stratford Underground Station is located just 500ft away.

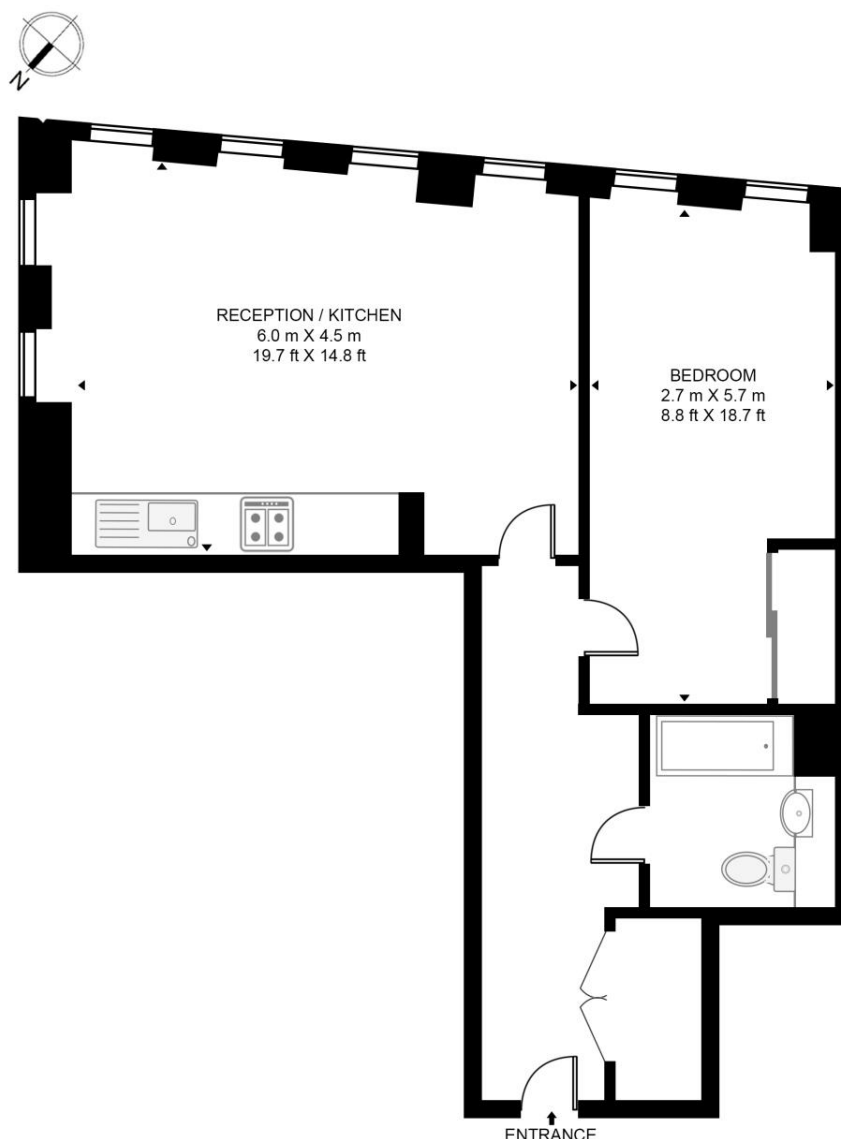
- 19th Floor
- 1 Double Bedroom
- Secure Development
- 24 Hour Concierge
- Fantastic Views
- Private Residents' Gymnasium
- Under-Floor Heating
- High Speed Broadband
- Secured Bicycle Storage
- 0.1 Mile from Stratford Station (Jubilee, Central, DLR, Overground and Elizabeth Line)

Floorplan

617 sq ft | 57 sq m

LEGACY TOWER

APPROXIMATE GROSS INTERNAL FLOOR AREA 617 SQ.FT (57.3 SQ.M)



NINETEENTH FLOOR

HDVA

This floor plan has been defined by the RICS Code of Measurement. This floor plan and all others are for approximate representative purposes only and upon usage is agreed to as such by the client.

WWW: hdvirtualart.com | TEL: 0203.974.1567 | EMAIL: info@hdvirtualart.com

Stratford
5 Station Street,
London E15 1DA
+4420 3147 1500
Lettingsstratford@eu.jll.com

Urban living, your way.

jll.co.uk/residential

© 2019 Jones Lang LaSalle IP, Inc. All rights reserved. All information contained herein is from sources deemed reliable; however, no representation or warranty is made to the accuracy thereof.

