



High Street, London E15

Asking price £335,000 Leasehold







Description

This 5th floor modern one double bedroom apartment is located within one of Stratford's most sought after developments River Heights E15 with 24hr concierge service.

The property comprises of a spacious living room with large balcony offering views towards Canary Wharf, Modern kitchen with integrated appliances, large double bedroom with built in storage and modern bathroom suite.

River heights is just a short walk from the amenities Westfield has to offer and also Stratford underground station for links across London.

Rent is payable on a monthly basis and you may be required to pay more than a month's rent in advance, depending on your circumstances. You will be required to pay a 1 week holding deposit following a successful offer. Utility bills, council tax, telephone line and broadband are not included in the rent. As well as paying the rent, you may also be required to make some additional permitted payments. If your tenancy does not qualify as an AST, additional fees may apply. Please visit jll.co.uk/fees for details of fees which may be payable when renting a property.

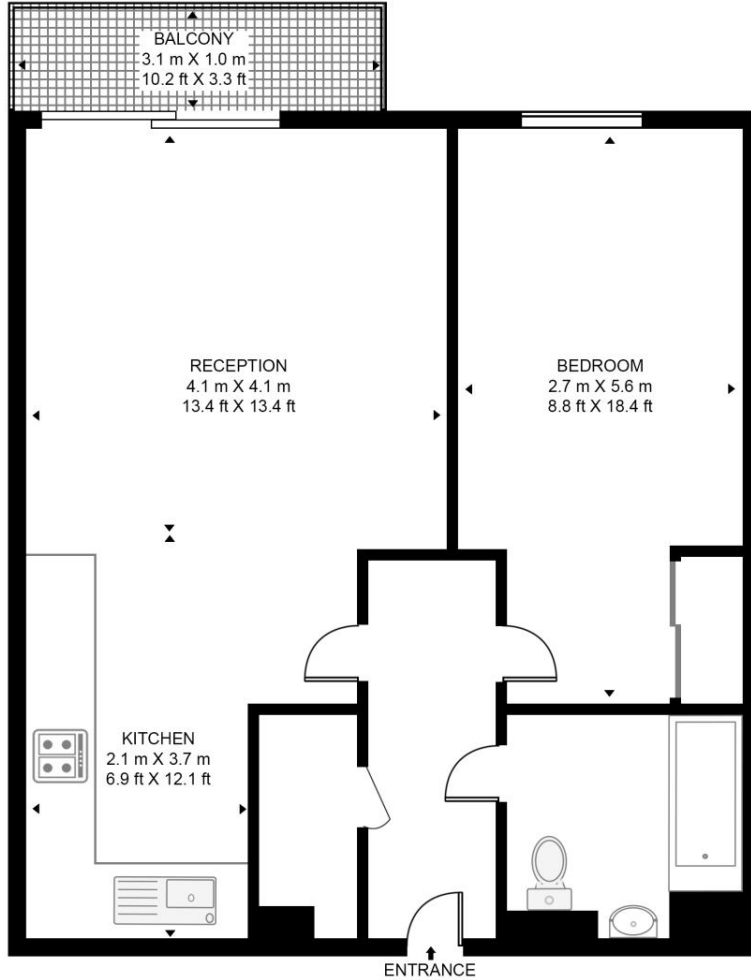
- Approx. 571 sq ft (53 sqm)
- Private Balcony
- Modern development
- 24hr Concierge Service
- 0.4 mile to Pudding Mill Lane DLR
- EPC Rating B
- Fully furnished
- Available now

Floorplan

571 sq ft | 53 sq m

RIVER HEIGHTS

APPROXIMATE GROSS INTERNAL FLOOR AREA 571 SQ.FT (53.1 SQ.M)



FIFTH FLOOR



This floor plan has been defined by the RICS Code of Measurement. This floor plan and all others are for approximate representative purposes only and upon usage is agreed to as such by the client.

WWW: hdvirtualart.com | TEL: 0203.974.1567 | EMAIL: info@hdvirtualart.com

Stratford
5 Station Street,
London E15 1DA
+4420 3147 1500
Lettingsstratford@eu.jll.com

Urban living, your way.

jll.co.uk/residential

© 2019 Jones Lang LaSalle IP, Inc. All rights reserved. All information contained herein is from sources deemed reliable; however, no representation or warranty is made to the accuracy thereof.

