



Great Eastern Road, London E15

Asking price £800,000 Leasehold







Description

New to the market is an opportunity to purchase this eighteenth floor 3 double bedroom 2 bathroom apartment spanning close to 1000 sq. ft with a 45ft long south-facing private terrace in one Stratford's most popular developments, Legacy Tower, E15.

Situated on the eighteenth and comprising of approximately 933 square feet, the property boasts a modern and fully fitted open-plan kitchen with integrated Smeg appliances, large living room leading to a 45ft long south-facing private terrace with amazing views of the London skyline, three double bedrooms and two bathrooms (including an en-suite for the master bedroom). Residents will further benefit from a 24hr concierge service, residential gymnasium, lift access and is close to local amenities. With Stratford Westfield on your doorstep, you are also a 0.1 mile walk from one of London's best connected transport hubs for Central, Jubilee, DLR, Overground, Elizabeth Line and TFL rail lines. You are also located walking distance to the famous Olympic park and East Village which is now home to many independent bars, restaurants and cafes.

Years remaining on lease: 240, Service charge approx: £5586.16pa, Ground rent: £425pa, Council Tax Band: E, Approx £277.76 reserve fund contribution every 6 months.

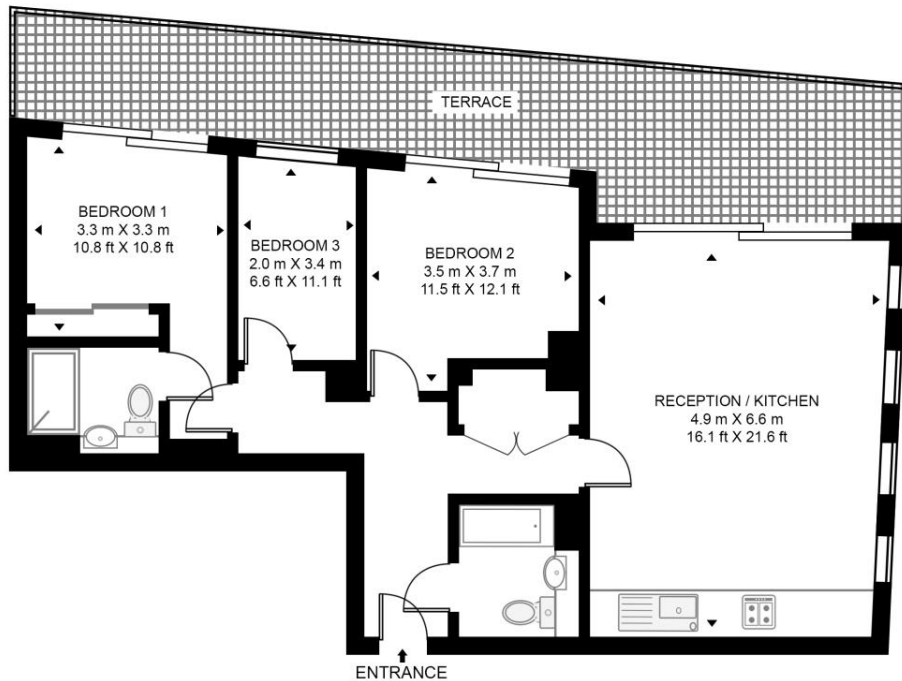
- Three bedrooms
- Two bathrooms (one en-suite)
- 18th Floor
- Approx 933sq.ft (86.7 sq.m)
- 24hr Concierge service
- Residential gymnasium
- Lift access
- Large terrace
- Views to River Thames, The O2 & Canary Wharf
- Short walk to Stratford Underground Station

Floorplan

933 sq ft | 87 sq m

LEGACY TOWER

APPROXIMATE GROSS INTERNAL FLOOR AREA 933 SQ.FT (86.7 SQ.M)



EIGHTEENTH FLOOR



This floor plan has been defined by the RICS Code of Measurement. This floor plan and all others are for approximate representative purposes only and upon usage is agreed to as such by the client.
WWW: hdvirtualart.com | TEL: 0203.974.1567 | EMAIL: info@hdvirtualart.com

Stratford
5 Station Street,
London E15 1DA
+4420 3147 1500
Lettingsstratford@eu.jll.com

Urban living, your way.

jll.co.uk/residential

© 2019 Jones Lang LaSalle IP, Inc. All rights reserved. All information contained herein is from sources deemed reliable; however, no representation or warranty is made to the accuracy thereof.

