



Cam Road, London E15

Guide price £300,000 Leasehold







Description

This delightful (550 sq ft) ground-floor apartment is situated in one of Stratford's most popular developments, Burford Wharf Apartments, just off Stratford High Street.

The property offers an inviting living space with a semi-open plan fitted kitchen and a lounge area ideal for dining. The spacious double bedroom is filled with natural light, complemented by a well-appointed family bathroom with a three-piece suite. Ample storage throughout adds to the apartment's appeal.

Its prime location provides easy access to Stratford High Street DLR, Pudding Mill DLR Station and Stratford Station, making commuting to Canary Wharf and the City effortless. Additionally, Westfield Shopping Centre and the Queen Elizabeth Olympic Park are just a short walk away.

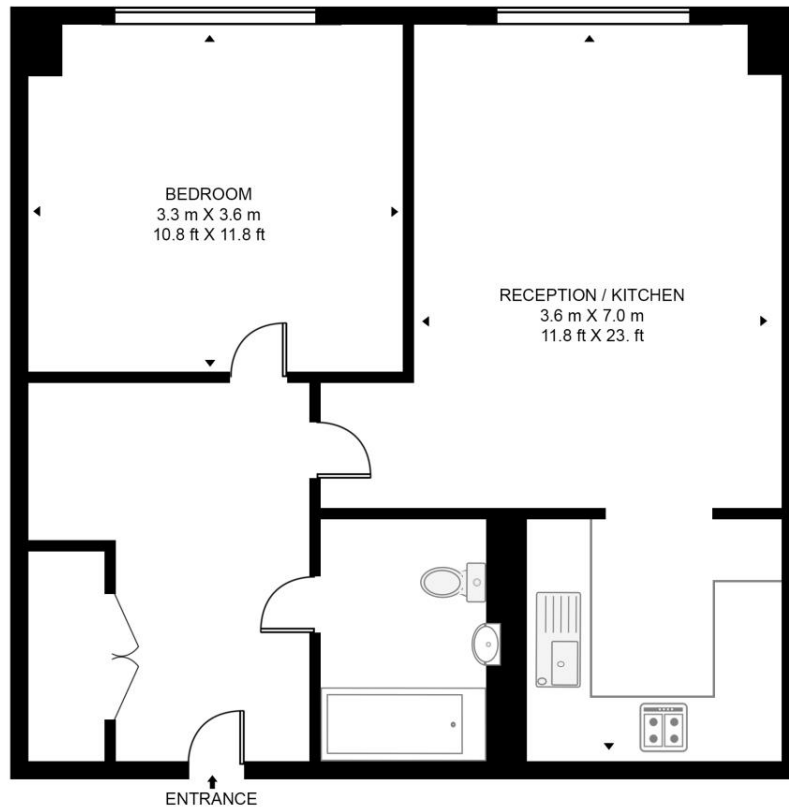
- One bedroom apartment
- Ground floor
- Three-piece bathroom suite
- Concierge service
- Short walk to Stratford Station
- Approx. 550 sq ft (51.1 sq m)
- Tenure: Leasehold
- EPC Rating: B

Floorplan

550 sq ft | 51 sq m

BURFORD WHARF

APPROXIMATE GROSS INTERNAL FLOOR AREA 550 SQ.FT (51.1 SQ.M)



GROUND FLOOR



This floor plan has been defined by the RICS Code of Measurement. This floor plan and all others are for approximate representative purposes only and upon usage is agreed to as such by the client.
WWW: hdvirtualart.com | TEL: 0203.974.1567 | EMAIL: info@hdvirtualart.com

Stratford
5 Station Street,
London E15 1DA
+4420 3147 1500
Lettingsstratford@eu.jll.com

Urban living, your way.

jll.co.uk/residential

© 2019 Jones Lang LaSalle IP, Inc. All rights reserved. All information contained herein is from sources deemed reliable; however, no representation or warranty is made to the accuracy thereof.

