



Rick Roberts Way, London E15

Asking price £350,000 Leasehold







Description

Welcome to this modern 5th-floor, 1-bedroom apartment boasting a generous 519 sq ft of living space. The apartment offers an unrivaled view of the London landscape, stretching from the iconic O2 to the awe-inspiring Canary Wharf. This unobstructed panorama captures the vibrant essence of the city. You'll be delighted to find a spacious balcony that acts as an extension of your living space, providing the perfect setting for relaxation.

Located on Rick Roberts Way, this apartment benefits from its prime position just off Stratford High Street, granting residents easy access to a wealth of transportation options and amenities. The world-renowned Westfield shopping centre, a haven for shoppers, is within close proximity, as is the magnificent Queen Elizabeth Olympic Park, offering an array of recreational activities.

For transportation convenience, the closest three train stations include Stratford High St DLR, Stratford Station, and Stratford International. Stratford International station provides direct access to Kings Cross in a mere 6 minutes, ensuring seamless connectivity to the heart of the city.

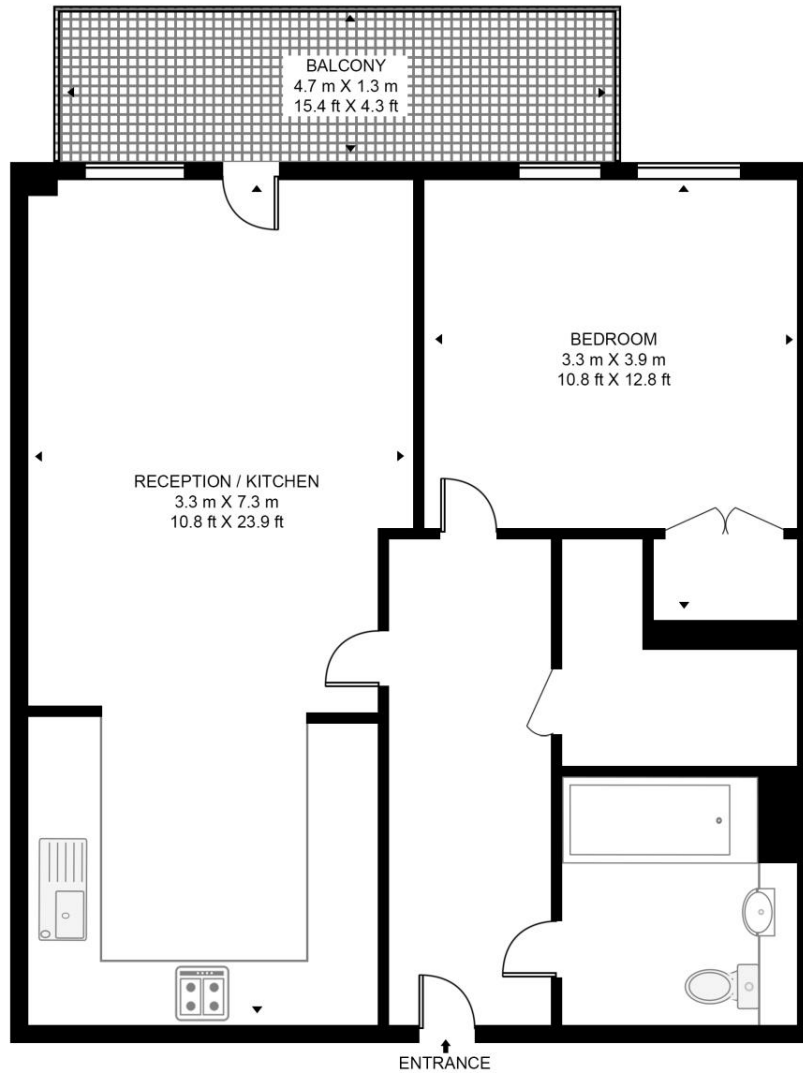
- One bedroom apartment
- 5th Floor with lift access
- Balcony
- EWS1 compliant (mortgageable)
- Approx 519 sq. ft (48.2 sq.m)
- Built-in wardrobes
- Perfect for first-time buyers
- EPC Rating B

Floorplan

519 sq ft | 48 sq m

RICK ROBERTS WAY

APPROXIMATE GROSS INTERNAL FLOOR AREA 519 SQ.FT (48.2 SQ.M)



FIFTH FLOOR



This floor plan has been defined by the RICS Code of Measurement. This floor plan and all others are for approximate representative purposes only and upon usage is agreed to as such by the client.

WWW: hdvirtualart.com | TEL: 0203.974.1567 | EMAIL: info@hdvirtualart.com

Stratford
5 Station Street,
London E15 1DA
+4420 3147 1500
Lettingsstratford@eu.jll.com

Urban living, your way.

jll.co.uk/residential

© 2019 Jones Lang LaSalle IP, Inc. All rights reserved. All information contained herein is from sources deemed reliable; however, no representation or warranty is made to the accuracy thereof.

