

Penny Brookes Street, London E15

Asking price £475,000 Leasehold







Description

This spacious one double bedroom apartment is located on the 4th floor in the very well located New Stratford Works E15. totalling over 550 sq. ft, this ultra modern apartment is finished to an exceptional standard.

Comprising entrance hall with ample storage, modern and fully fitted bathroom suite, large double bedroom with in-built storage, fully integrated kitchen and large living space leading to private balcony. The property further benefits floor-to-ceiling windows throughout, an EPC rating B and being part of a secure development where you are well located for Queen Elizabeth Olympic Park, home to London Aquatics Centre, East Village for nice bars and restaurants together with Hackney Wick which is a short walk away.

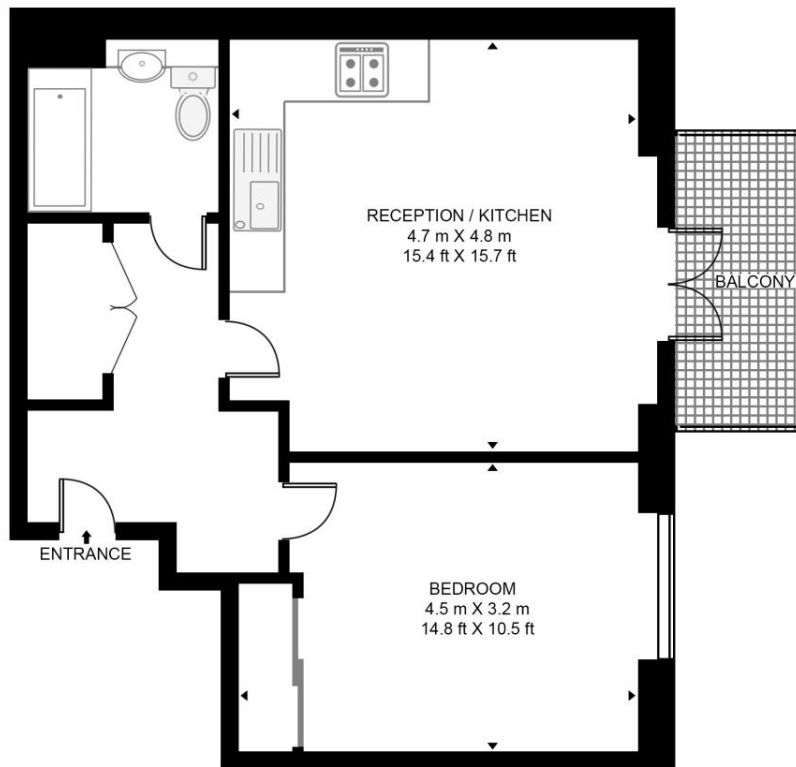
Wenborn Building is within walking distance of Stratford Station, providing excellent transport links into The City, Canary Wharf, and West End. Westfield Stratford City shopping centre is also less than 0.5 miles away offering access to excess of 250 shops, and over 60 bars and restaurants.

- One Bedroom
- One Bathroom
- Balcony
- 4th floor
- New Stratford Work development
- Finished to a high specification
- Approx. 554 sq ft (51.5 sq m)
- Approx. 0.5 mile to Stratford Station
- EPC: B

Floorplan

544 sq ft | 51 sq m

WENBORN BUILDING, NEW STRATFORD WORKS
APPROXIMATE GROSS INTERNAL FLOOR AREA 554 SQ.FT (51.5 SQ.M)



FOURTH FLOOR

HDVA

This floor plan has been defined by the RICS Code of Measurement. This floor plan and all others are for approximate representative purposes only and upon usage is agreed to as such by the client.
WWW: hdvirtualart.com | TEL: 0203.974.1567 | EMAIL: info@hdvirtualart.com

Stratford
5 Station Street,
London E15 1DA
+4420 3147 1500
Lettingsstratford@eu.jll.com

Urban living, your way.

jll.co.uk/residential

© 2019 Jones Lang LaSalle IP, Inc. All rights reserved. All information contained herein is from sources deemed reliable; however, no representation or warranty is made to the accuracy thereof.

