

## Glasshouse Gardens, Stratford E20

Asking price £499,995 Leasehold









## Description

This high specification 14th floor one bedroom apartment with its private balcony offers fantastic views located in the desirable Glasshouse Gardens development.

Comprising a large living room with floor to ceiling windows offering great views, open plan grey high gloss kitchen with high-end integrated appliances, large double bedroom with built in storage and a tiled modern bathroom suite.

Glasshouse Gardens offers a 24-hour Concierge Service and residents' gym, as well as being just a short distance from Stratford Underground station for a quick commute to Liverpool Street and Canary Wharf. The development is also situated directly opposite the amenities of Westfield Shopping Centre providing an array of shops, restaurants and entertainment opportunities.

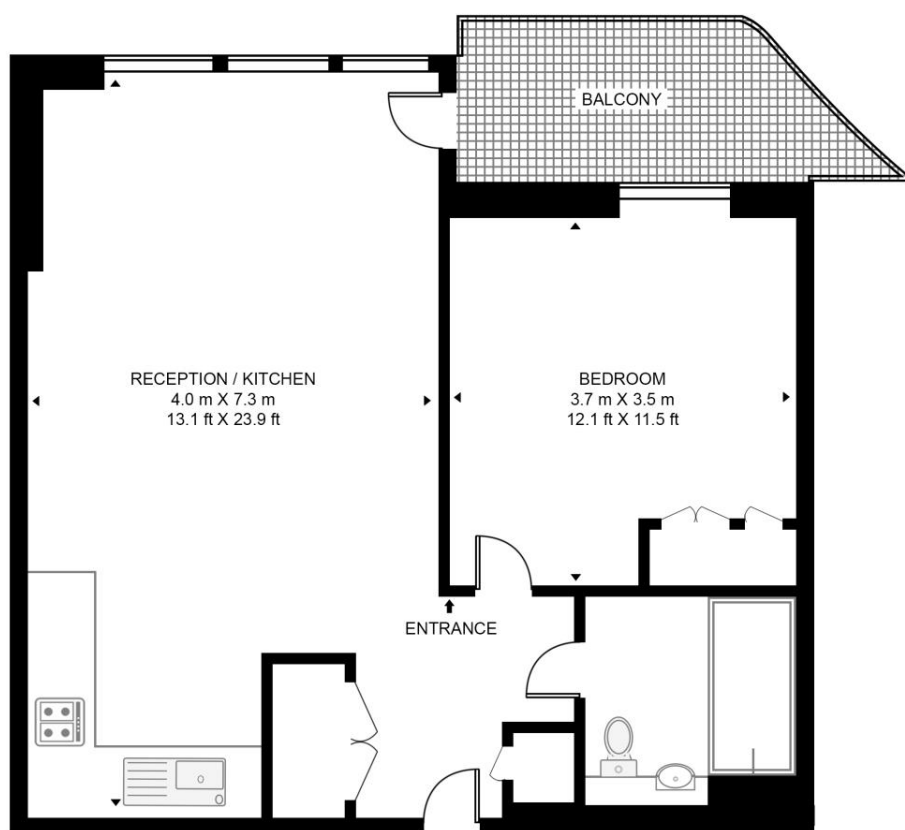
- Spacious one bedroom apartment
- Ultra modern throughout
- 24 hour Concierge service
- Residential gymnasium
- Private balcony
- 14th Floor
- Approx 562 sq.ft (52.2 sq. m)
- Views overlooking Olympic landmarks
- Communal landscaped gardens
- Short walk to Stratford Underground, DLR and International Station

# Floorplan

562 sq ft | 52 sq m

## LANTANA HEIGHTS

APPROXIMATE GROSS INTERNAL FLOOR AREA 562 SQ.FT (52.2 SQ.M)



## FOURTEENTH FLOOR



This floor plan has been defined by the RICS Code of Measurement. This floor plan and all others are for approximate representative purposes only and upon usage is agreed to as such by the client.

WWW: [hdvirtualart.com](http://hdvirtualart.com) | TEL: 0203.974.1567 | EMAIL: [info@hdvirtualart.com](mailto:info@hdvirtualart.com)

Stratford  
5 Station Street,  
London E15 1DA  
+4420 3147 1500  
[Lettingsstratford@eu.jll.com](mailto:Lettingsstratford@eu.jll.com)

*Urban living, your way.*

[jll.co.uk/residential](http://jll.co.uk/residential)

© 2019 Jones Lang LaSalle IP, Inc. All rights reserved. All information contained herein is from sources deemed reliable; however, no representation or warranty is made to the accuracy thereof.

