

Taylor Place, London E3

Asking price £650,000 Leasehold







Description

New to the market is an ultra-modern and high-end specification 2-bedroom, 2-bathroom sub-penthouse apartment located in Nougat Court, Taylor Place, Bow.

Spanning over 1300 sq.ft, you enter into a large hallway that leads you into the spacious open-plan 678 sq.ft living area. With floor to ceiling windows and a private south-east facing terrace, this area makes the perfect entertaining space. The kitchen boasts sleek countertops, high-quality appliances and plenty of storage, making it a chef's dream.

The apartment also features two generously sized bedrooms equipped with large storage cupboards, high end and modern bathroom en-suites providing comfortable spaces to unwind and rejuvenate.

Situated next door to Stratford, you'll have easy access to an array of shops, restaurants, and parks (Victoria Park and Queen Elizabeth Olympic Park). Excellent transport links are available with Pudding Mill Lane DLR, Stratford International, Stratford Underground, and Bow Road stations, providing easy access across London via the Central, Jubilee, and District lines, as well as Overground and National Rail services.

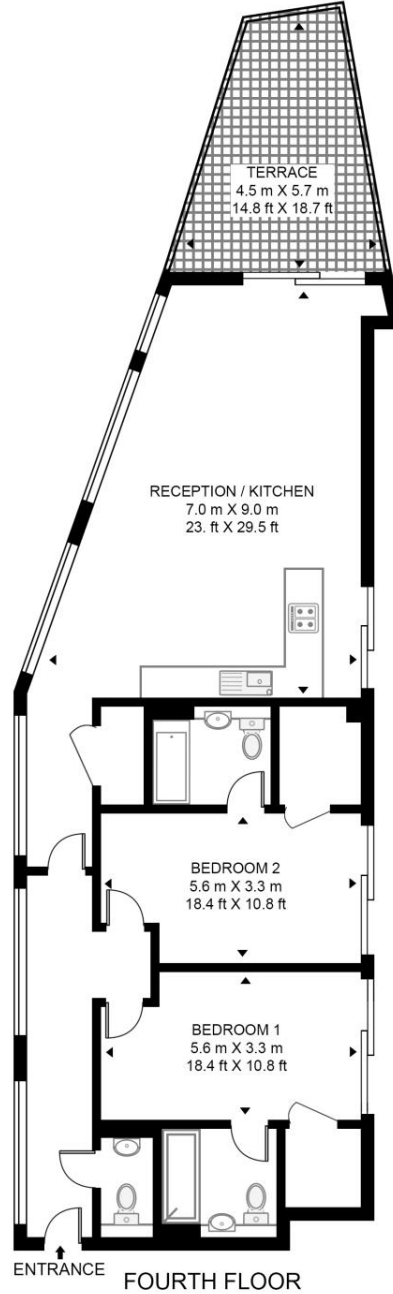
- Two bedrooms
- Two bathrooms (one en-suite)
- Ultra modern throughout
- Guest WC
- Air-conditioning
- Modern and secure development
- Concierge
- Private terrace
- Approx 1312 sq.ft (121.9 sq. m)
- 4th floor with lift

Floorplan

1,312 sq ft | 122 sq m

NOUGAT COURT

APPROXIMATE GROSS INTERNAL FLOOR AREA 1312 SQ.FT (121.9 SQ.M)



This floor plan has been defined by the RICS Code of Measurement. This floor plan and all others are for approximate representative purposes only and upon usage is agreed to as such by the client.
WWW: hdvirtualart.com | TEL: 0203.974.1567 | EMAIL: info@hdvirtualart.com

Stratford
5 Station Street,
London E15 1DA
+4420 3147 1500
Lettingsstratford@eu.jll.com

Urban living, your way.

jll.co.uk/residential

© 2019 Jones Lang LaSalle IP, Inc. All rights reserved. All information contained herein is from sources deemed reliable; however, no representation or warranty is made to the accuracy thereof.

