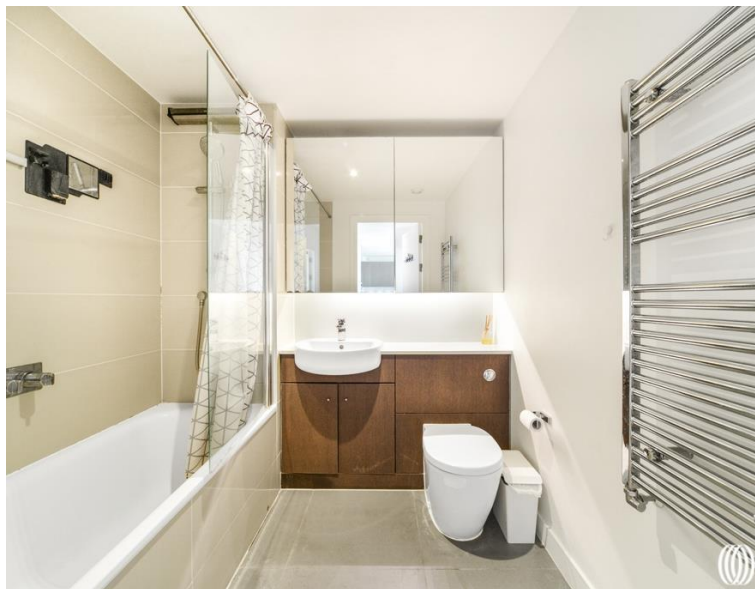




Cheering Lane, London E20

Asking price £425,000 Leasehold







Description

Opportunity to purchase this modern one bedroom apartment in the popular development within East Village, Tucana Heights, E20.

Situated on the second floor and comprising of approximately 538 square feet, the property boasts an open-plan kitchen/living area with integrated appliances, private balcony, hallway storage and double bedroom with a separate bathroom. The building further benefits from 24 hour-security on site.

The development is located a mere 5 minute walk to Stratford International station, with Stratford Station under 10 minutes' walk making the City of London and Canary Wharf easily reachable within 20 minutes. Residents further benefit from being a short walk to the iconic Olympic Park, with living benefits from 27 acres of public spaces, local bars, cafes and restaurants as well as 30 shops on the doorstep. The building also falls into the catchment area for the Chobham Academy school rated outstanding by Ofsted.

Years remaining on lease: 114, Service charge: £2400pa, Ground rent: £250pa, Council tax band: C

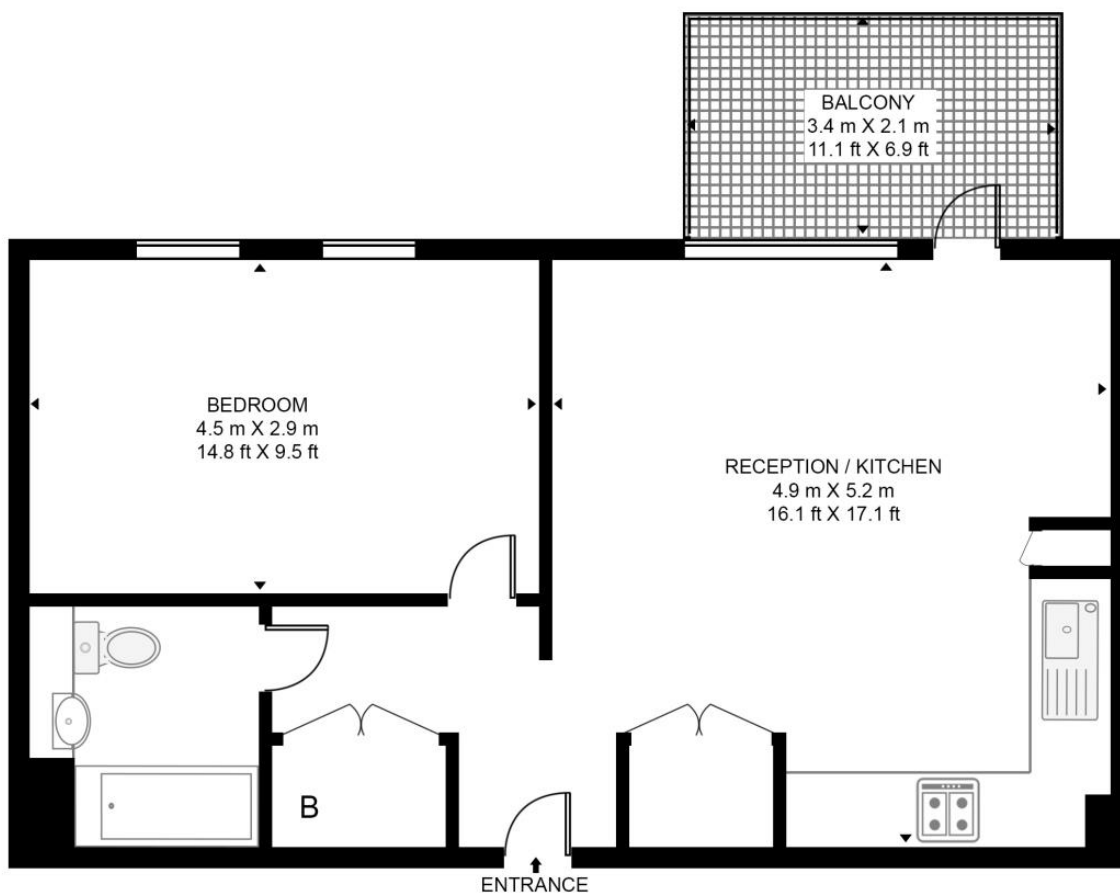
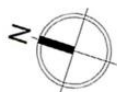
- Within East Village, Stratford
- Private balcony
- Internal hallway storage
- 24 hour-security on site
- Close to Stratford International DLR Station
- Short walk to iconic Olympic Park
- Short walk to Westfield's Stratford City
- Tenure: Leasehold
- EPC: B

Floorplan

538 sq ft | 50 sq m

TUCANA HEIGHTS, CHEERING LANE

APPROXIMATE GROSS INTERNAL FLOOR AREA 538 SQ.FT (50 SQ.M)



Stratford
5 Station Street,
London E15 1DA
+4420 3147 1500
Lettingsstratford@eu.jll.com

Urban living, your way.

jll.co.uk/residential

© 2019 Jones Lang LaSalle IP, Inc. All rights reserved. All information contained herein is from sources deemed reliable; however, no representation or warranty is made to the accuracy thereof.

