



# Great Eastern Road, London E15

Asking price £635,000 Leasehold









## Description

This 24th floor ultra-modern two bedroom apartment with panoramic views of London's skyline is located within one of Stratford's most iconic developments, Stratosphere Tower E15. Residents benefit from access to a 24 hour concierge service, private residents' roof-top gymnasium and Wi-Fi lounge.

Comprising entrance hall with ample storage, 2 double bedrooms, 2 bathrooms (en suite to master bedroom), modern and fully fitted kitchen and large living room with views of the City Skyline. The current owners have also added air conditioning throughout the apartment for easy climate control. Property has smart controllable underfloor heating and air conditioning. Kitchen, living room & hallway come with a quality laminate, bedrooms are carpeted in a neutral colour tone. Décor with smooth finish to all walls & ceilings, painted in white emulsion and white satinwood finish. Bath with thermostatic rain shower mixer & glazed screen, contemporary ceramic tiling, large vanity mirror, bespoke cabinetry with built in storage & low voltage socket and two towel rails.

Years remaining on lease: 992, Service charge: £4,531.06pa, Ground rent: £450pa, Council tax band: D

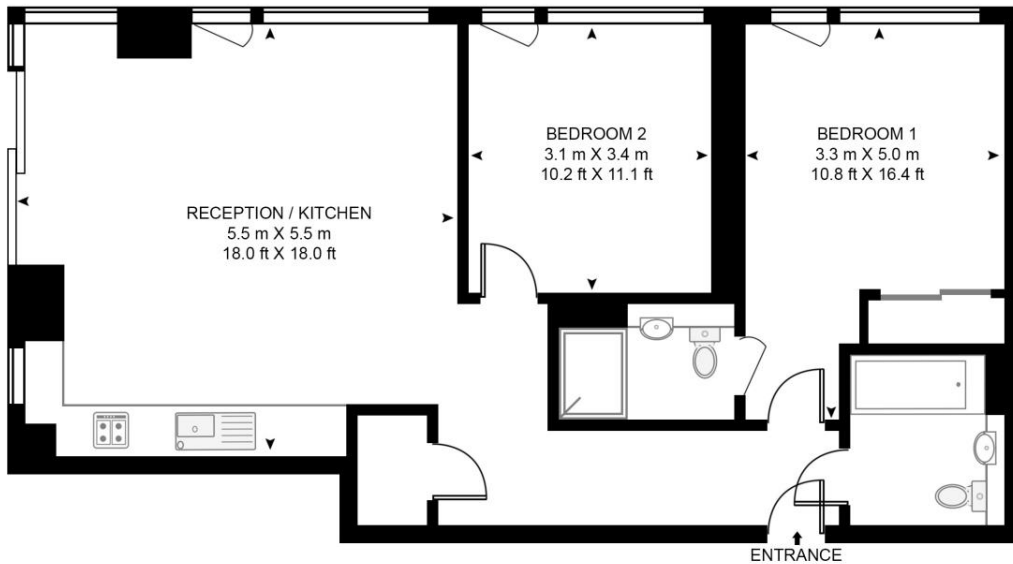
- Two bedrooms
- Two bathrooms (one en-suite)
- 24th floor
- Fantastic views
- Air conditioning
- Underfloor heating
- Approx 796 sq. ft (74 sq.m)
- 24hr Concierge service
- Residential gym and roof terrace
- WiFi lounge

# Floorplan

796 sq ft | 74 sq m

## STRATOSPHERE TOWER

APPROXIMATE GROSS INTERNAL FLOOR AREA 796 SQ.FT (74 SQ.M)



## TWENTY FOURTH FLOOR



This floor plan has been defined by the RICS Code of Measurement. This floor plan and all others are for approximate representative purposes only and upon usage is agreed to as such by the client.  
WWW: [hdvirtualart.com](http://hdvirtualart.com) | TEL: 0203.974.1567 | EMAIL: [info@hdvirtualart.com](mailto:info@hdvirtualart.com)

Stratford  
5 Station Street,  
London E15 1DA  
+4420 3147 1500  
[Lettingsstratford@eu.jll.com](mailto:Lettingsstratford@eu.jll.com)

*Urban living, your way.*

[jll.co.uk/residential](http://jll.co.uk/residential)

© 2019 Jones Lang LaSalle IP, Inc. All rights reserved. All information contained herein is from sources deemed reliable; however, no representation or warranty is made to the accuracy thereof.

