



THE GREEN, LONDON E15





This four bedroom, two reception room mid-terraced house within a quiet residential street spans close to 1000 sq.ft and is located a mere 0.3 mile walk to Maryland Station where you are in the centre of London within 10 minutes. A house like this will make a perfect first-time purchase, family home or high yield investment.

The property comprises entrance hall with under stair storage leading to two large reception rooms, fully tiled bathroom suite and fully fitted kitchen leading to a very quaint and well-maintained private garden. The first floor comprises a further fully tiled family bathroom, three double bedrooms with a 4th single bedroom/study room. This house further benefits massive extension potential, with many houses in the direct area carrying out extensive building works such as single and/or double storey rear extensions and loft conversions.

All transport facilities on your doorstep, with Stratford Station and Stratford International a short walk away with connections from TFL, Crossrail and National Rail including: St. Pancras International & Kings Cross, Stratford International DLR station & Canary Wharf and London City Airport.

Being in Stratford you will also be a short walk away from East Village and the famous Olympic Park, which offer an abundance of cafes, restaurants and shops, world-class sporting facilities as well as having easy access to Westfield.

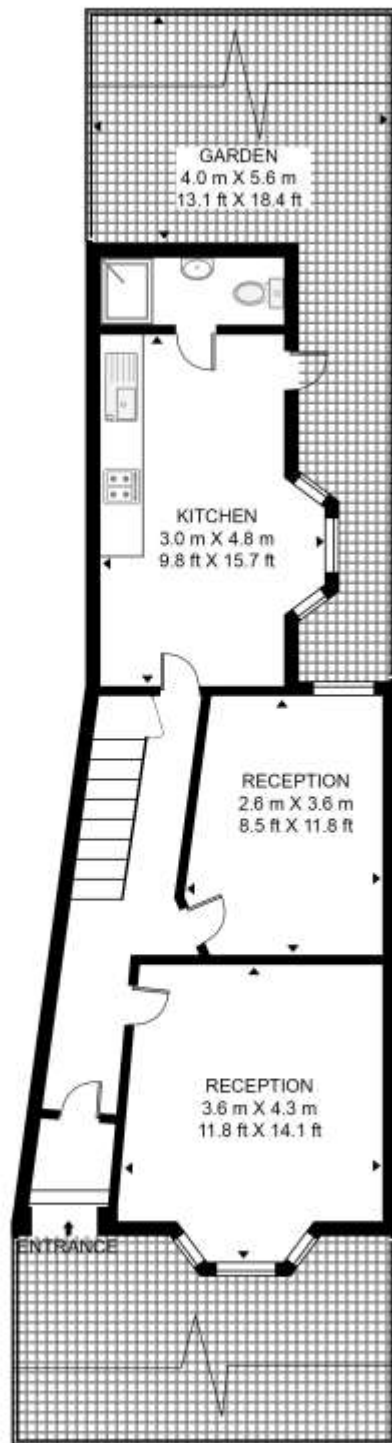
GUIDE PRICE
OIEO £625,000

GROSS INTERNAL AREA
971 sq. ft (90.2 sq. m)

- Period home
- 3 bedrooms
- 4th single/study room
- Two reception rooms
- Two bathrooms
- Private garden
- Walking distance to Stratford Station
- Perfect family home
- Approx 971 sq. ft (90.2 sq. m)
- EPC Rating C

THE GREEN

APPROXIMATE GROSS INTERNAL FLOOR AREA 971 SQ.FT (90.2 SQ.M)



GROUND FLOOR



FIRST FLOOR



HDVA

This floor plan has been defined by the RICS Code of Measurement. This floor plan and all others are for approximate representative purposes only and upon usage is agreed to as such by the client.

WWW: hdvirtualart.com | TEL: 0203.974.1567 | EMAIL: info@hdvirtualart.com

Unex Tower
5 Station Street
London
E15 1DA

These particulars are for general information only and do not constitute any part of an offer or contract. All statements contained therein are made without responsibility on the part of the vendors or lessors and are not to be relied upon as statement or representation of fact. Intending purchasers or lessees must satisfy themselves, by inspection, or otherwise, as to the correctness of each of the statements or dimensions contained in these particulars..