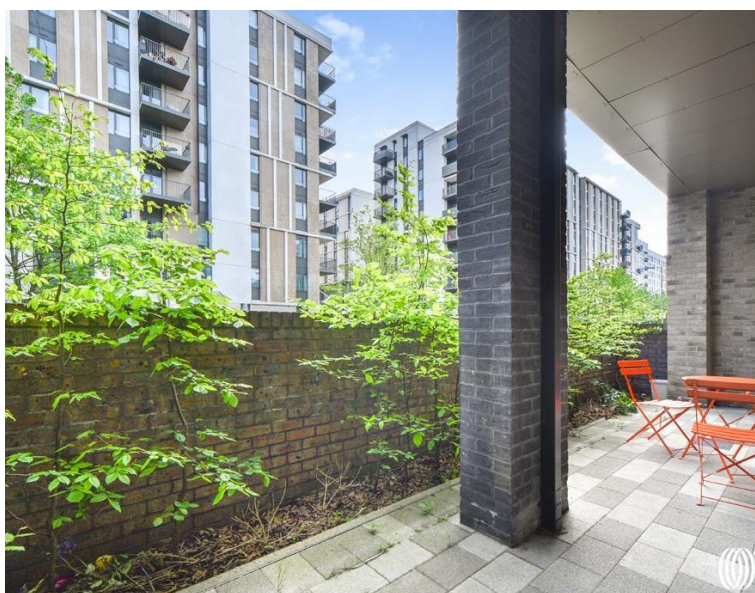


Honour Lea Avenue, London E20

Asking price £475,000 Leasehold







Description

Beautifully presented one bedroom apartment located on the ground floor in the Goswell Court development (built in 2021), offering a fantastic specification throughout and with a private terrace. The property is approximately 549 sq. ft, boasts an open-plan kitchen/living area with integrated appliances, a large private terrace that can be accessed from both bedroom and living room, double bedroom with built-in wardrobes and a contemporary fitted bathroom with heated towel rails.

Chobham Manor is nestled between East Village, formerly the Athletes' Village, and the Lee Valley. The East Village cultural district is an eclectic mix of independent cafes, restaurants, bars, and shops. Westfield Stratford City, one of Europe's largest shopping destinations is a short stroll away and home to 300 shops, restaurants, bars and entertainment including a bowling alley, casino and a 17-screen cinema complex. Step outside your new home and discover thoughtfully planted walkways, award winning parklands and peaceful waterways where it's easy to unwind. A short stroll brings you to Stratford International, one of London's major transport hubs. Enjoy the benefits of a shorter commute with Central Line trains to Liverpool Street and Jubilee Line trains to Canary Wharf taking under 10 minutes. Lease: 122 years, SC: £2,546pa, GR: TBC, Park Charge: approx £264pa, CT Band: D

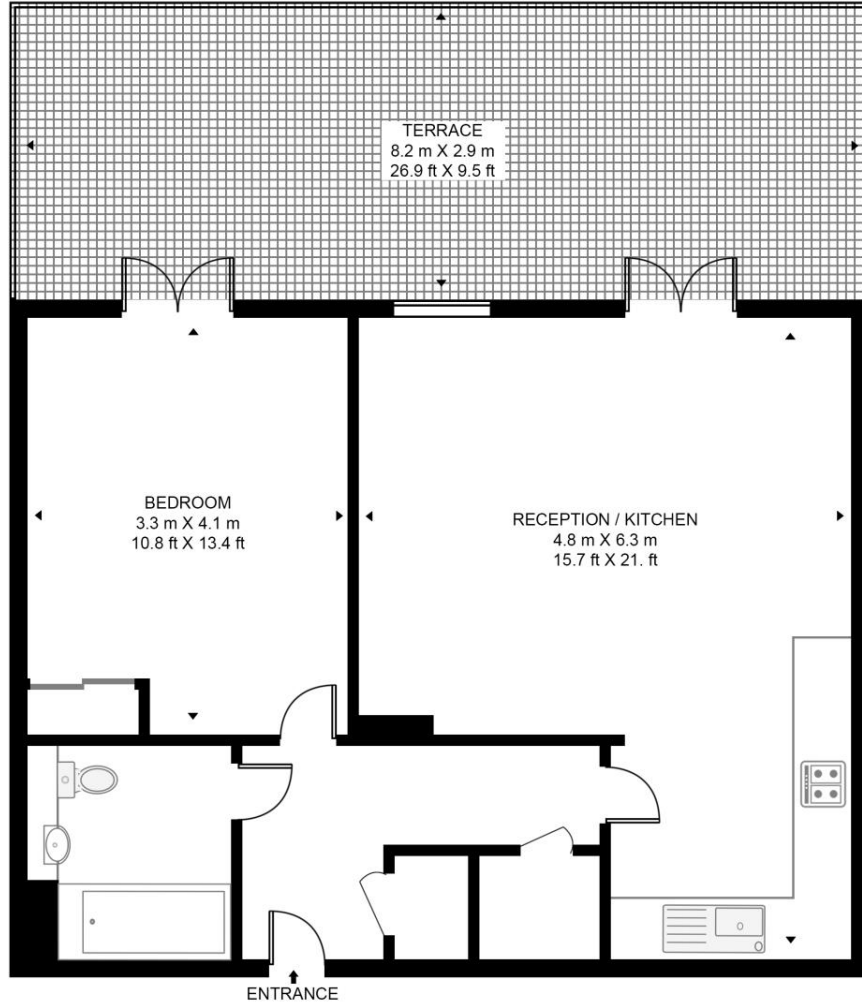
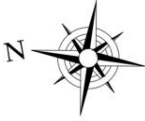
- Modern one bedroom apartment
- Ground floor with private terrace
- Integrated appliances
- Approx. 549 sq.ft (51 sq.m)
- Communal bike storage
- Modern development built in 2021
- Easy access to local amenities
- East Village E20 location
- EPC Rating B

Floorplan

549 sq ft | 51 sq m

GOSWELL COURT

APPROXIMATE GROSS INTERNAL FLOOR AREA 549 SQ.FT (51 SQ.M)



GROUND FLOOR



This floor plan has been defined by the RICS Code of Measurement. This floor plan and all others are for approximate representative purposes only and upon usage is agreed to as such by the client.
WWW: hdvirtualart.com | TEL: 0203.974.1567 | EMAIL: info@hdvirtualart.com

Stratford
5 Station Street,
London E15 1DA
+4420 3147 1500
Lettingsstratford@eu.jll.com

Urban living, your way.

jll.co.uk/residential

© 2019 Jones Lang LaSalle IP, Inc. All rights reserved. All information contained herein is from sources deemed reliable; however, no representation or warranty is made to the accuracy thereof.

