



Station Street, London E15

Asking price £622,500 Leasehold







Description

Fabulous 2 double bedroom apartment located on the 7th floor in Unex Tower, E15. Spanning well over 900 sq. ft, this stunning example of a corner unit has been maintained to an extremely high standard by its current owner.

The accommodation comprises large entrance hall with two large storage cupboards, modern family bathroom suite, fully fitted and integrated ultra-modern kitchen, large open plan reception room with floor-to-ceiling windows with south/east views leading to private winter garden, and two double bedrooms.

Stratford Station and Stratford International are a 0.1 mile walk with connections from TFL, Crossrail and National Rail including: St. Pancras International & Kings Cross, Stratford International DLR station & Canary Wharf and London City Airport.

Years remaining on lease: 116, Service charge: £3800pa, Ground rent: TBC, Council tax band: D

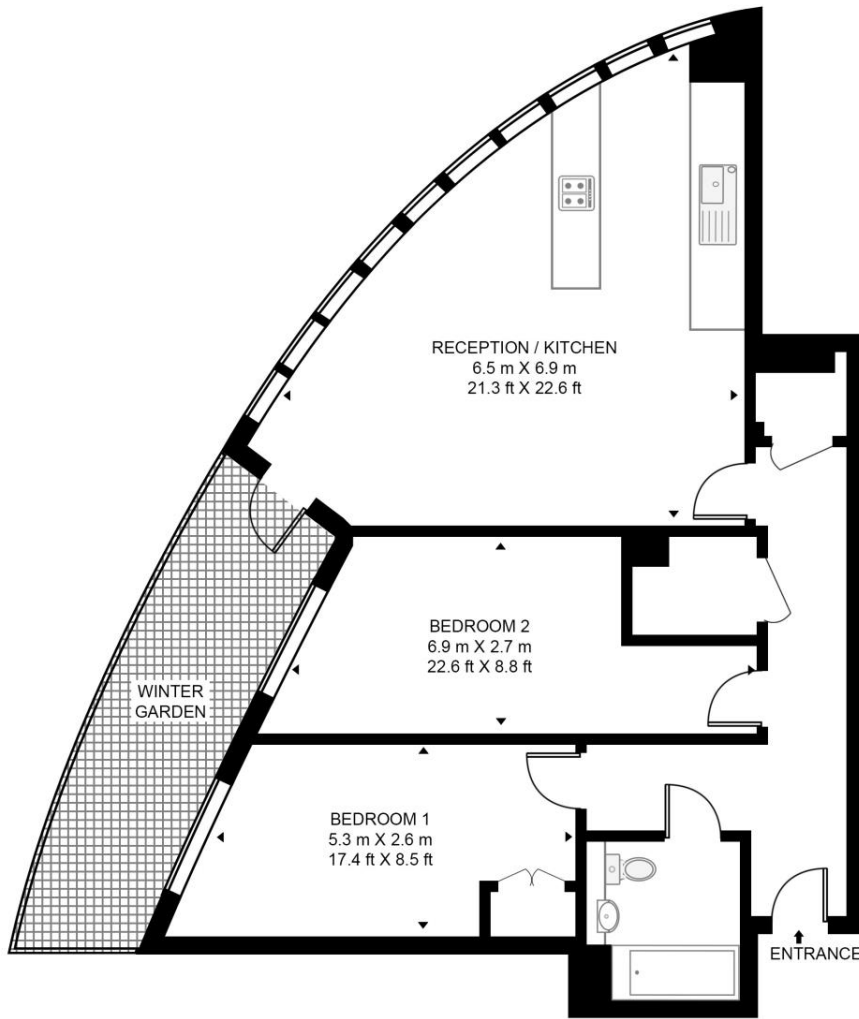
- Two bedrooms
- One bathroom
- Approx. 931 sq.ft (86.5 sq.m)
- 7th Floor
- 24hr Concierge
- Views across the City & Olympic Park
- Residents roof terrace
- Moments from Stratford Station
- EPC: B

Floorplan

931 sq ft | 87 sq m

UNEX TOWER

APPROXIMATE GROSS INTERNAL FLOOR AREA 931 SQ.FT (86.5 SQ.M)



SEVENTH FLOOR



This floor plan has been defined by the RICS Code of Measurement. This floor plan and all others are for approximate representative purposes only and upon usage is agreed to as such by the client.
WWW: hdvirtualart.com | TEL: 0203.974.1567 | EMAIL: info@hdvirtualart.com

Stratford
5 Station Street,
London E15 1DA
+4420 3147 1500
salesstratford@eu.jll.com

Urban living, your way.

jll.co.uk/residential

© 2019 Jones Lang LaSalle IP, Inc. All rights reserved. All information contained herein is from sources deemed reliable; however, no representation or warranty is made to the accuracy thereof.

