



Olympic Park Avenue, London E20

Asking price £875,000 Leasehold







Description

This spacious and high specification 2nd floor three-bedroom apartment is in the heart of the Olympic Park within the Chobham Manor development and offers fantastic panoramic views of the Olympic Park, City and Canary Wharf with the added benefit of parking within the vicinity.

The property comprises an open plan living area, kitchen with ceramic hob, an integrated oven and Amtico flooring - Chateau Oak with teak finish. Bedroom one is served by an en suite comprising a walk-in shower. There are a further two double bedrooms all with rear balcony access and a fully-tiled family bathroom. Underfloor heating is offered throughout all main rooms. To the front, a large balcony overlooks the Olympic Rings with panoramic city views.

Conveniently located in the famous Chobham Manor, which offer an abundance of cafes, restaurants and shops, world-class sporting facilities as well as having easy access to Westfield. Stratford Station and Stratford International are also a short walk away with connections from TFL, Crossrail and National Rail including: St. Pancras International & Kings Cross, Stratford International DLR station & Canary Wharf and London City Airport.

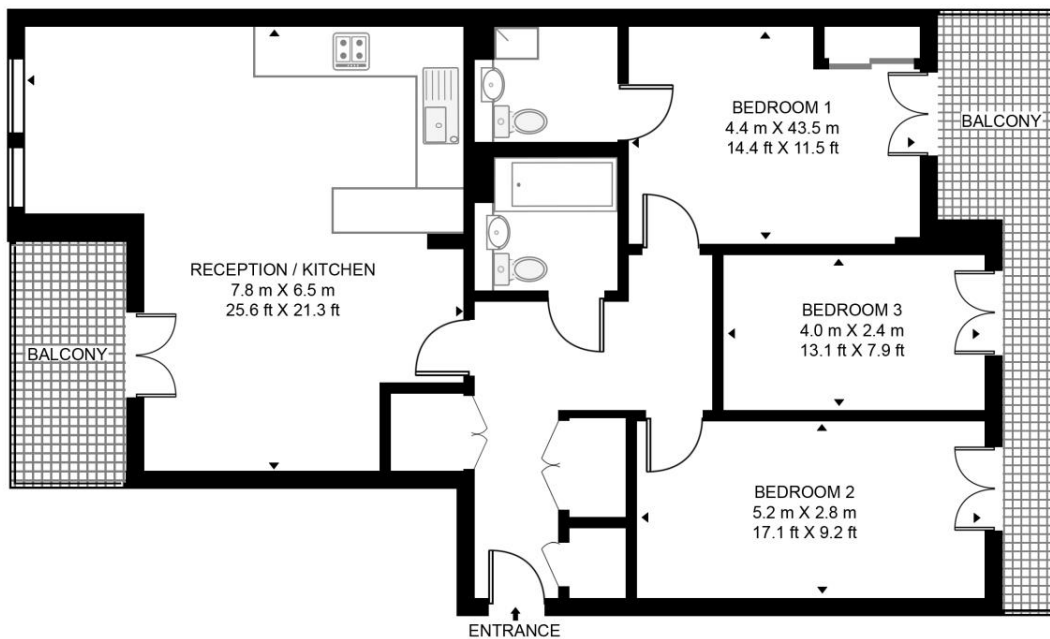
- Three bedrooms
- Two bathrooms (one en-suite)
- Private Balcony
- High specification finish
- Chobham manor
- Panoramic Park and City Views
- 2nd floor
- Allocated parking space
- Secure bike storage
- 0.7 miles from Stratford

Floorplan

1,116 sq ft | 104 sq m

PARK VIEW MANSIONS

APPROXIMATE GROSS INTERNAL FLOOR AREA 1116 SQ.FT (103.7 SQ.M)



SECOND FLOOR



This floor plan has been defined by the RICS Code of Measurement. This floor plan and all others are for approximate representative purposes only and upon usage is agreed to as such by the client.
WWW: hdvirtualart.com | TEL: 0203.974.1567 | EMAIL: info@hdvirtualart.com

Stratford
5 Station Street,
London E15 1DA
+4420 3147 1500
salesstratford@eu.jll.com

Urban living, your way.

jll.co.uk/residential

© 2019 Jones Lang LaSalle IP, Inc. All rights reserved. All information contained herein is from sources deemed reliable; however, no representation or warranty is made to the accuracy thereof.

