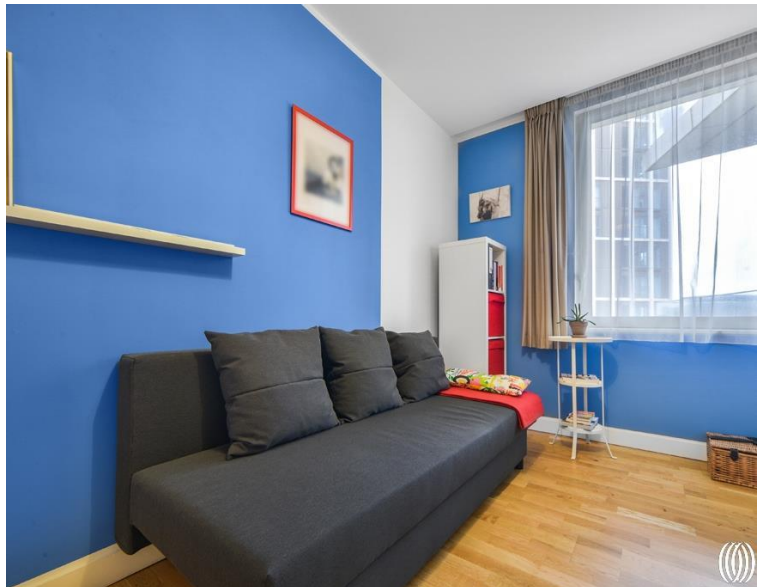


## 4 Liberty Bridge Road,, London E20

Asking price £580,000 Leasehold











## Description

This 11th floor two bedroom apartment is located in the heart of East Village, where you are a stone's throw from the iconic Queen Elizabeth Park and a short distance from Westfield shopping centre, Stratford International station and underground.

Comprising entrance hall with 2 separate storage cupboards, fully fitted family bathroom, 2 double bedrooms, modern and integrated, large reception/dining room leading to 23ft. long balcony with fantastic views towards Stratford City.

The East Village itself is home to many independent bars, restaurants and cafes with a gym and Sainsbury's also nearby. The building also falls into the catchment area for the Chobham Academy school rated outstanding by Ofsted.

Years remaining on lease: 115, Annual service charge: approx. £3591.60pa, Annual ground rent: £350pa, Council tax band: D

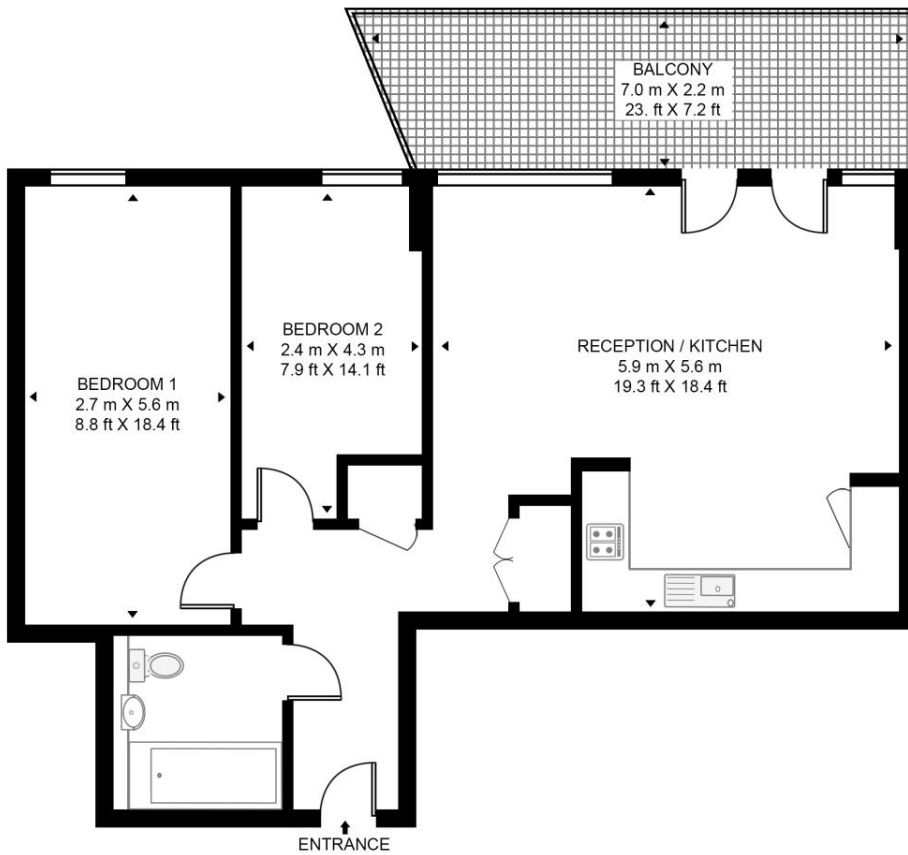
- Two bedrooms
- One bathroom
- Large Balcony
- 11th Floor
- Secure development
- East Village
- Approx. 748 sq. ft (69.5 sq. m)
- 0.5 miles from Stratford Station

# Floorplan

748 sq ft | 70 sq m

## VESTA HOUSE

APPROXIMATE GROSS INTERNAL FLOOR AREA 748 SQ.FT (69.5 SQ.M)



ELEVENTH FLOOR



This floor plan has been defined by the RICS Code of Measurement. This floor plan and all others are for approximate representative purposes only and upon usage is agreed to as such by the client.  
WWW: [hdvirtualart.com](http://hdvirtualart.com) | TEL: 0203.974.1567 | EMAIL: [info@hdvirtualart.com](mailto:info@hdvirtualart.com)

Stratford  
5 Station Street,  
London E15 1DA  
+4420 3147 1500  
[Lettingsstratford@eu.jll.com](mailto:Lettingsstratford@eu.jll.com)

*Urban living, your way.*

[jll.co.uk/residential](http://jll.co.uk/residential)

© 2019 Jones Lang LaSalle IP, Inc. All rights reserved. All information contained herein is from sources deemed reliable; however, no representation or warranty is made to the accuracy thereof.

