



**SKYLINE APARTMENTS
MAKERS YARD
LONDON E3**





Excited to offer this (441 sq. ft) studio apartment at Three Waters development in Bow Creek by top developers 'Mount Anvil'. This perfectly located residence on the 3rd floor offers a bright and spacious kitchen/living/bedroom area with access to a good-sized private balcony with River Lea views.

The development itself offers an array of amenities to enhance the living experience, including a 24-hour concierge, state-of-the-art screening room, residents' room, and a resident's roof terrace and garden situated on the podium level.

Strategically located near the River Lea and Limehouse Cut, Three Waters enjoys a prime position in the heart of East London. The area offers a blend of rich history and a vibrant array of boutique shops and restaurants. Additionally, residents benefit from easy access to central London, with both the Tube and DLR within walking distance. This allows for a swift commute to the City and Canary Wharf in as little as 12 minutes.

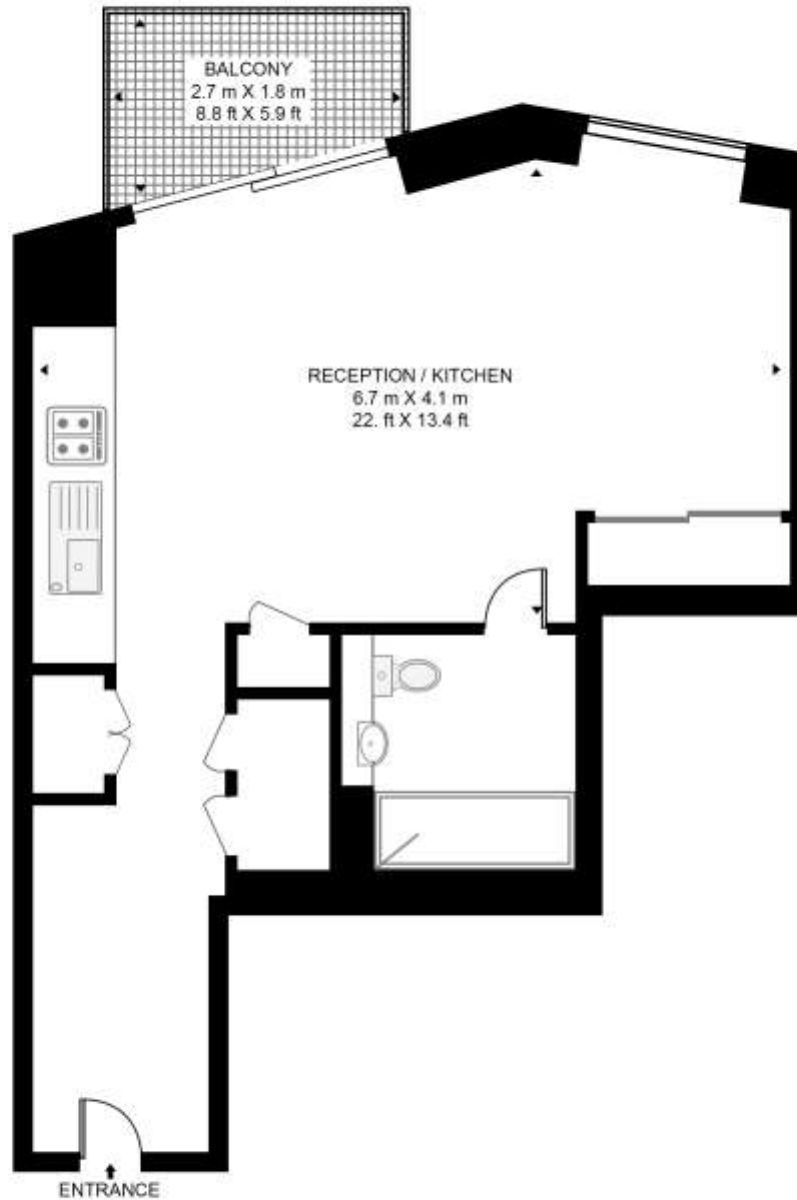
- Studio Apartment (441 sq. ft)
- 3rd floor with balcony
- High specification
- Bow Creek development
- 24-hour Concierge Service
- Rooftop terrace & Landscaped Garden
- Walking distance to Devon's Road and Bromley-By-Bow

GUIDE PRICE
OIEO £375,000

GROSS INTERNAL AREA
441 sq. ft (41 sq. m)

SKYLINE APARTMENTS

APPROXIMATE GROSS INTERNAL FLOOR AREA 441 SQ.FT (41 SQ.M)



THIRD FLOOR



This floor plan has been defined by the RICS Code of Measurement. This floor plan and all others are for approximate representative purposes only and upon usage is agreed to as such by the client.

WWW: hdvirtualart.com | TEL: 0203.974.1567 | EMAIL: info@hdvirtualart.com

Unex Tower
5 Station Street
London
E15 1DA

These particulars are for general information only and do not constitute any part of an offer or contract. All statements contained therein are made without responsibility on the part of the vendors or lessors and are not to be relied upon as statement or representation of fact. Intending purchasers or lessees must satisfy themselves, by inspection, or otherwise, as to the correctness of each of the statements or dimensions contained in these particulars..