



High Street, London E15

Asking price £360,000 Leasehold







Description

This 10th floor ultra modern one double bedroom apartment is located in one of Stratford's most sought after developments River Heights E15 boasting residents gym, roof terrace and 24hr concierge service. River heights is just a short walk from the amenities Westfield has to offer and also Stratford underground station for links across London.

The property comprises a spacious living room with 2 large balconies offering panoramic views of towards the Olympic park and stadium, Modern high gloss kitchen with integrated appliances, large double bedroom with built in storage and modern bathroom.

The property benefits from air conditioning with modern fixtures and fittings throughout. Residents further benefit from 24hr concierge, residential gym, large residents roof terrace and parking (by separate negotiation).

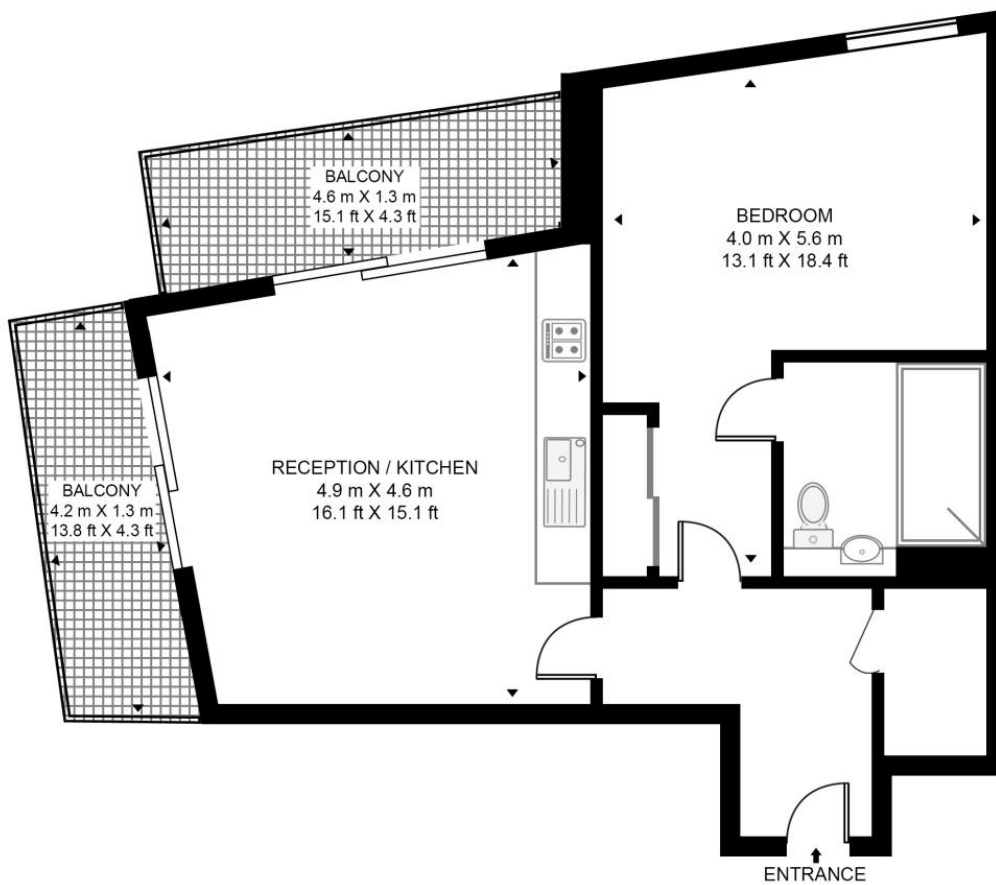
- 1 Bedroom
- 1 Bathroom
- 10th floor
- 2 Balconies
- 24 hr Concierge
- Residents Gym
- 0.4 mile to Pudding Mill Lane DLR
- Approx. 554 Sq ft (51.5 sq m)
- EPC: B

Floorplan

554 sq ft | 52 sq m

RIVER HEIGHTS

APPROXIMATE GROSS INTERNAL FLOOR AREA 554 SQ.FT (51.5 SQ.M)



Stratford
5 Station Street,
London E15 1DA
+4420 3147 1500
salesstratford@eu.jll.com

Urban living, your way.

jll.co.uk/residential

© 2019 Jones Lang LaSalle IP, Inc. All rights reserved. All information contained herein is from sources deemed reliable; however, no representation or warranty is made to the accuracy thereof.

