



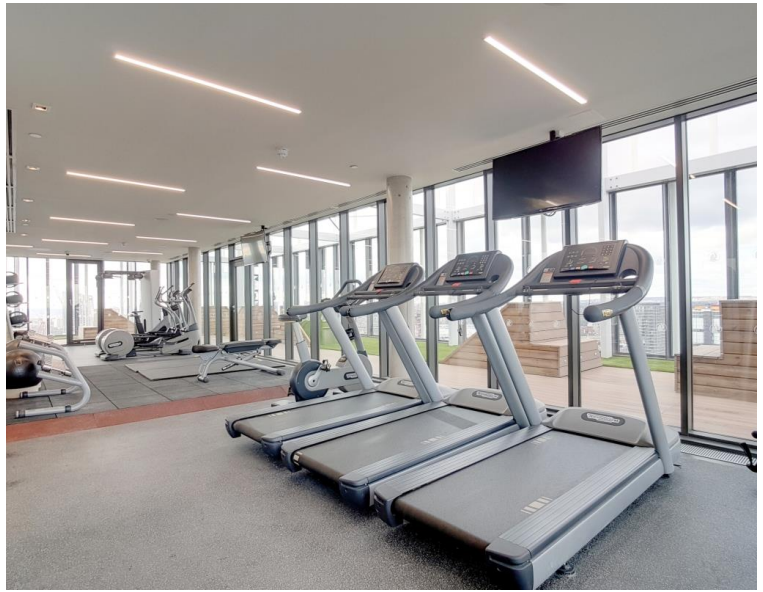
# Great Eastern Road, London E15

Guide price £475,000 Leasehold









## Description

This 18th floor ultra modern 1 bedroom apartment is located within one of Stratford's most iconic developments, Stratosphere Tower E15. Residents benefit from access to a 24 hour concierge service, private residents' roof-top gymnasium and Wi-Fi lounge.

Comprising entrance hall with ample storage, 1 double bedroom, family bathroom, modern and fully fitted kitchen and large living room with panoramic views of the London skyline.

Residents benefit from access to a 24 hour concierge service, private residents' roof-top gymnasium and Wi-Fi lounge, along with easy access to the world renowned 2012 Olympic Park and Westfield shopping centre.

Stratford Station and Stratford International are a mere 0.1 mile walk with connections from TFL, Crossrail and National Rail including: St. Pancras International & Kings Cross, Stratford International DLR station & Canary Wharf and London City Airport.

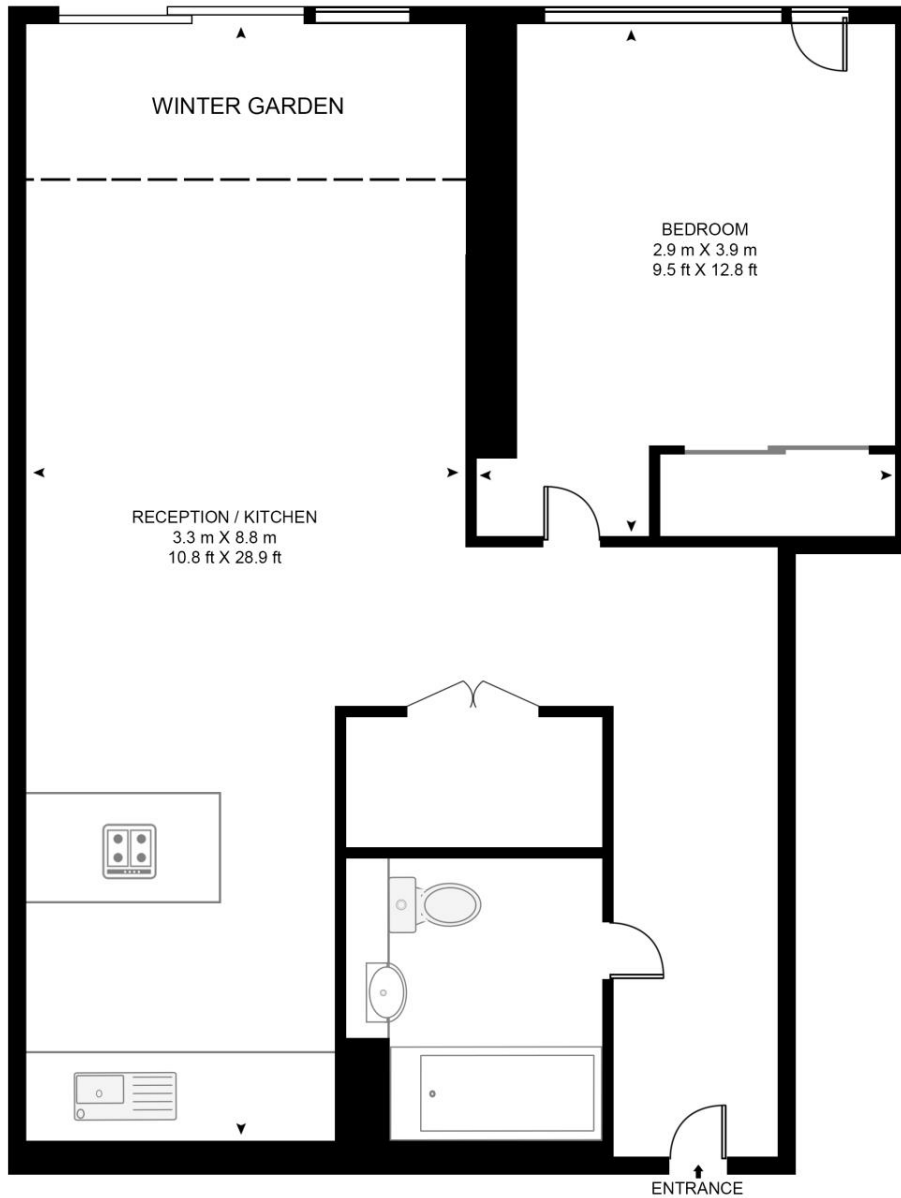
- 1 Bedroom
- 1 Bathroom
- 18th Floor
- Secure Development
- Panoramic Views
- Winter Garden
- Residential Gym
- 24 Hour Concierge
- 0.2 mile from Stratford Underground Station
- Approx. 569 sq. ft (52.9 sq. m)

# Floorplan

569 sq ft | 53 sq m

## STRATOSPHERE TOWER

APPROXIMATE GROSS INTERNAL FLOOR AREA 569 SQ.FT (52.9 SQ.M)



This floor plan has been defined by the RICS Code of Measurement. This floor plan and all others are for approximate representative purposes only and upon usage is agreed to as such by the client.

WWW: [hdvirtualart.com](http://hdvirtualart.com) | TEL: 0203.974.1567 | EMAIL: [info@hdvirtualart.com](mailto:info@hdvirtualart.com)

Stratford  
5 Station Street,  
London E15 1DA  
+4420 3147 1500  
[Lettingsstratford@eu.jll.com](mailto:Lettingsstratford@eu.jll.com)

*Urban living, your way.*

[jll.co.uk/residential](http://jll.co.uk/residential)

© 2019 Jones Lang LaSalle IP, Inc. All rights reserved. All information contained herein is from sources deemed reliable; however, no representation or warranty is made to the accuracy thereof.

