



**CASSIA POINT, GLASSHOUSE  
GARDENS, E20**





New to the market becomes available this 18th floor 2 bedroom 1 bathroom apartment located in Cassia Point, part of Stratford City's most sought after developments Glasshouse Gardens E20.

Comprising entrance hall with double storage, modern family bathroom, 2 double bedrooms, large modern and fully fitted kitchen and living room leading out to panoramic views of London.

With residents gymnasium and 24hr concierge within the Glasshouse Gardens development, Queen Elizabeth Park just a short walk from Stratford station and directly opposite the amenities of Westfield Shopping Centre, this high specification and modern apartment is Located perfectly for a short commute to Canary Wharf and the City.

#### PRICE

OIEO £625,000

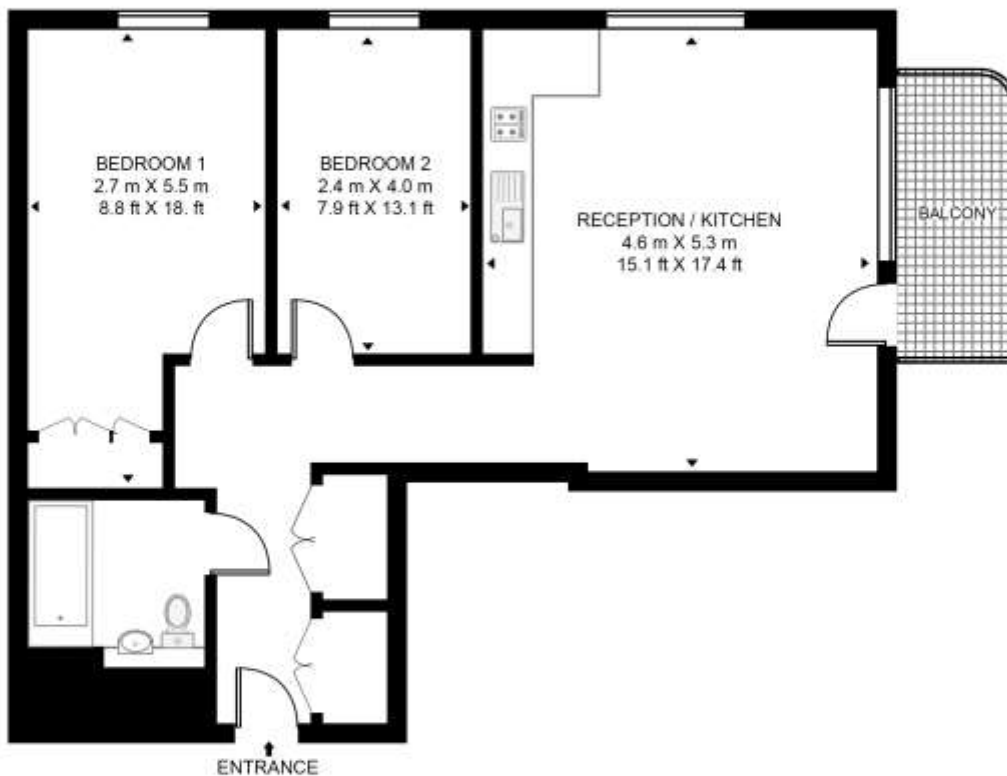
#### GROSS INTERNAL AREA

Approx. 697sq. ft (64.8 sq. m)

- 2 Bedrooms
- 1 Bathroom
- 18th floor
- Balcony
- Gym
- 24 Hour concierge
- Approx.697 sq ft (64.8 sq m.)
- 0.3 mile to Stratford underground
- No onward chain
- EPC: B

## CASSIA POINT, GLASSHOUSE GARDENS

APPROXIMATE GROSS INTERNAL FLOOR AREA 697 SQ.FT (64.8 SQ.M)



### EIGHTEENTH FLOOR



**HDVA**

This floor plan has been defined by the RICS Code of Measurement. This floor plan and all others are for approximate representative purposes only and upon usage is agreed to as such by the client.

WWW: [hdvirtualart.com](http://hdvirtualart.com) | TEL: 0203 974 1567 | EMAIL: [info@hdvirtualart.com](mailto:info@hdvirtualart.com)

Unex Tower  
5 Station Street  
London  
E15 1DA

These particulars are for general information only and do not constitute any part of an offer or contract. All statements contained therein are made without responsibility on the part of the vendors or lessors and are not to be relied upon as statement or representation of fact. Intending purchasers or lessees must satisfy themselves, by inspection, or otherwise, as to the correctness of each of the statements or dimensions contained in these particulars..