



RIVER APARTMENTS, GILLENDER STREET LONDON E3





Newly available, fantastic opportunity to buy ultra-modern 1 bedroom apartment on the 6th floor within the Three Waters development, Bow E3.

Located within London City's fastest growing area, every aspect of the development has been designed to make the most of the waterfront location.

The raised garden, the roof terrace, the private balconies offering far-reaching views of the water, benefiting the well-being of you and your family and creating a tranquil space to call home

Further benefits include a six minutes' walk from Bromley-by-Bow Station, with easy commutes to Stratford International DLR & Stratford Underground Station, and local amenities such as Westfield's Stratford City.

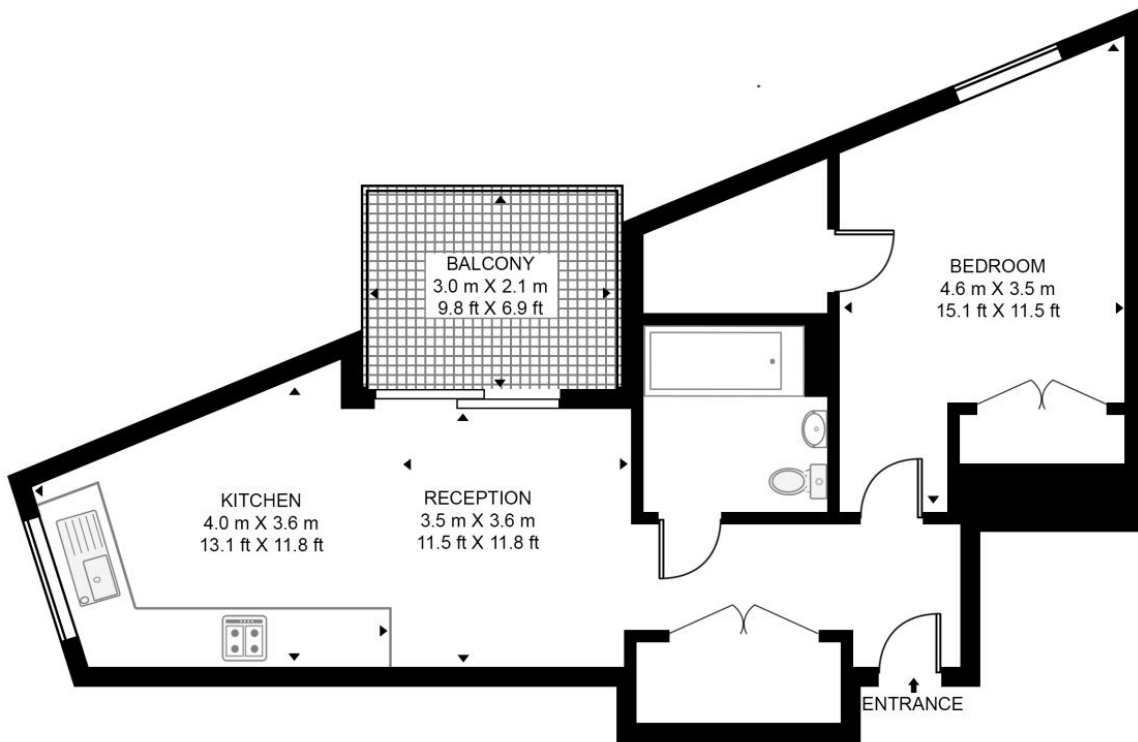
- 1 Bedroom
- Concierge Service
- Residential Roof Terrace
- Communal Landscaped Gardens
- On-Site Cinema Room
- Private Balcony
- Short Walk to Bromley-By-Bow Station
- EPC Rating: B
- Approx. 539 sq ft (50.1 sq m)

PRICE
OIEO £375,00

GROSS INTERNAL AREA
Approx. 539 sq ft (50.1 sq m)

THREE WATERS

APPROXIMATE GROSS INTERNAL FLOOR AREA 539 SQ.FT (50.1 SQ.M)



SIXTH FLOOR



This floor plan has been defined by the RICS Code of Measurement. This floor plan and all others are for approximate representative purposes only and upon usage is agreed to as such by the client.

WWW: hdvirtualart.com | TEL: 0203.974.1567 | EMAIL: info@hdvirtualart.com

Unex Tower
5 Station Street
London
E15 1DA

These particulars are for general information only and do not constitute any part of an offer or contract. All statements contained therein are made without responsibility on the part of the vendors or lessors and are not to be relied upon as statement or representation of fact. Intending purchasers or lessees must satisfy themselves, by inspection, or otherwise, as to the correctness of each of the statements or dimensions contained in these particulars..