



**MANHATTAN LOFT APARTMENTS,
INTERNATIONAL WAY, STRATFORD
LONDON E20**





Situated in Stratford City's iconic Manhattan Loft Gardens, this 8th floor studio apartment is bright, well located and finished to a high specification.

Above the world class hotel 'The Stratford' and from the team that launched The Chiltern Firehouse and St Pancras Renaissance Hotel, Manhattan Loft Gardens involved the same architects as the Burj Khalifa and provides three bars, three sky gardens and two restaurants.

- 248 lofts.
- 145 Hotel rooms.
- 42 storeys.
- 3 sky gardens.
- 1 world class restaurant from Patrick Powell (Chiltern Firehouse)
- 1 private club.
- 1 brasserie from Ben Harrington (Soho House)

Manhattan Loft Gardens looks to evoke the timeless glamour and vibrant society of 1950's New York legendary hotels. The building promises to combine world class architecture, hospitality and art.

Designed by SOM, the architects behind iconic skyscrapers Burj Khalifa (Dubai) and One World Trade Centre (New York), Manhattan Loft Gardens is a spectacular double-cantilevered tower of expansive living spaces, three sky gardens, two restaurants and a design hotel. The collection of 248 apartments have been designed by Parisian duo Studio KO (Chiltern Firehouse) and the 145 room luxury hotel and world class restaurant interiors have been designed by SPACE Copenhagen, the designers behind the legendary NOMA.

The tower's unique structure is propelled by a vision of embracing green space and fresh air to develop a dynamic upward living community. London's historic garden squares have been re-imagined for the 21st century and are carved into the building at 95, 280 and 400 feet, delivering breath-taking panoramic views.

Clad in a façade of terracotta and glass, Manhattan Loft Gardens is Europe's most ambitious residential tower from the legendary Harry Handelsman. Each apartment will be finished with a custom-made kitchen and exquisitely crafted intelligent storage spaces with engineered timber floors throughout.

Located within the Olympic park, just seconds from Stratford International station (Kings Cross 6 minutes) and minutes' walk from Stratford station (Liverpool Street 9 minutes).

- Studio Loft
- One Bathroom
- Residential Gym
- 3 Sky Gardens
- 24 Hour Concierge
- 0.1 Mile from Stratford Station
- Approx. 437 sq ft (40.6 sq m)
- EPC: B

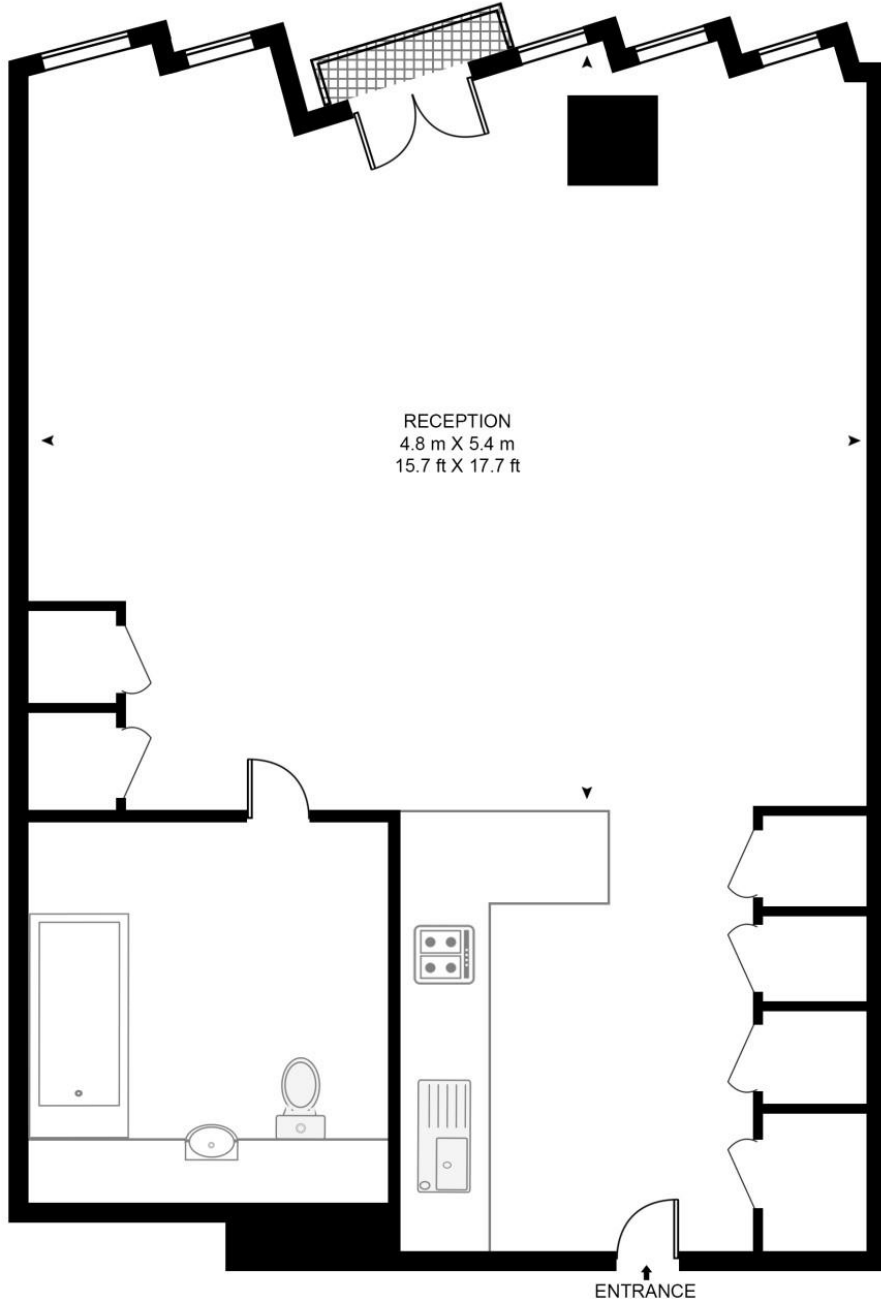
PRICE
OIEO £500,000

GROSS INTERNAL AREA
Approx. 437 sq ft (40.6 sq m)

FOR MORE INFORMATION CALL +44 (0) 208 463 6755 OR EMAIL stratfordsales@eu.jll.com

MANHATTAN LOFT APARTMENTS

APPROXIMATE GROSS INTERNAL FLOOR AREA 437 SQ.FT (40.6 SQ.M)



HDVA

This floor plan has been defined by the RICS Code of Measurement. This floor plan and all others are for approximate representative purposes only and upon usage is agreed to as such by the client.

WWW: hdvirtualart.com | TEL: 0203.974.1567 | EMAIL: info@hdvirtualart.com

Unex Tower
5 Station Street
London
E15 1DA

These particulars are for general information only and do not constitute any part of an offer or contract. All statements contained therein are made without responsibility on the part of the vendors or lessors and are not to be relied upon as statement or representation of fact. Intending purchasers or lessees must satisfy themselves, by inspection, or otherwise, as to the correctness of each of the statements or dimensions contained in these particulars..