



**WATERMAN HOUSE, FORRESTER WAY,
STRATFORD E15**





An opportunity to purchase a three bedroom apartment in New Garden Quarter boasting a beautifully 2 acre landscaped garden square, private green spaces, concierge and residents gym.

Apartments finished to a high specification. Open plan living room and kitchen, high specification kitchens include handle-less fitted units, engineered stone worktops, glass splash backs and fully integrated appliances. Bathrooms and en suite shower rooms offer bespoke cabinetry and ceramic tiling. Fitted wardrobes to master bedroom and under floor heating throughout.

Arranged around a beautifully landscaped 2 acre garden square, New Garden Quarter benefits from facilities that include a 24 hour concierge, residents' gymnasium, proposed nursery, café and other commercial opportunities, as well as the extensive facilities available in fast-growing Stratford itself. Each home is built to the highest standard, creating a unique development in one of London's most talked-about districts.

All photos are of a flat within the development and should be used as a representation of the development only

- 3 Bedrooms
- 2 Bathrooms
- 2 Balconies
- Modern apartment
- 24-Hour concierge
- Residents' gym
- Leasehold
- Wi-Fi Lounge
- 0.2 mile from Stratford underground station
- EPC: B

PRICE

OIEO £700,000

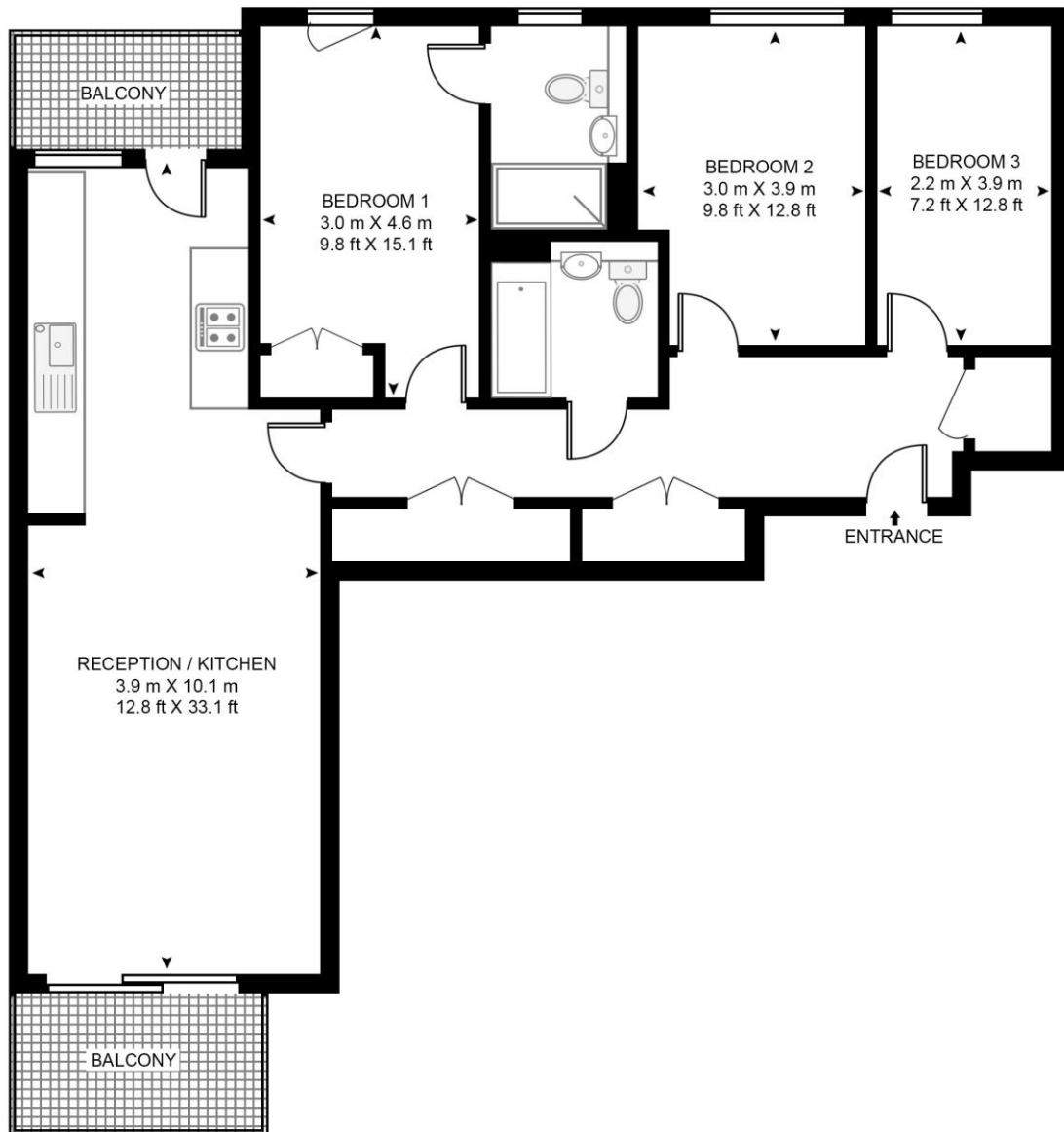
GROSS INTERNAL AREA

1,039 sq ft (96.5 sq m)

Located next to Queen Elizabeth Park for Westfield and access to Stratford Underground station for easy access to Liverpool Street, Canary Wharf and Bank.

FOR MORE INFORMATION CALL +44 (0) 208 463 6755 OR EMAIL salesstratford@eu.jll.com

WATERMAN HOUSE, NEW GARDEN QUARTER
APPROXIMATE GROSS INTERNAL FLOOR AREA 1039 SQ.FT (96.5 SQ.M)



HDVA

This floor plan has been defined by the RICS Code of Measurement. This floor plan and all others are for approximate representative purposes only and upon usage is agreed to as such by the client.

WWW: hdvirtualart.com | TEL: 0203.974.1567 | EMAIL: info@hdvirtualart.com

Unex Tower
5 Station Street
London
E15 1DA

These particulars are for general information only and do not constitute any part of an offer or contract. All statements contained therein are made without responsibility on the part of the vendors or lessors and are not to be relied upon as statement or representation of fact. Intending purchasers or lessees must satisfy themselves, by inspection, or otherwise, as to the correctness of each of the statements or dimensions contained in these particulars..