



Coster Avenue, London N4

Asking price £850,000 Leasehold







Description

A stunning two bedroom apartment with south facing balcony and private terrace. It also has added benefit of resident's swimming pool and gym, 24 hour concierge and a short walk to zone 2 tube on the Piccadilly Line. With under-floor heating, a luxury kitchen unit, two bathrooms and a private terrace offering views towards the water and city skyline, this brand new apartment will offer excellent fixtures and is also located in a peaceful setting of landscaped gardens. Woodberry Down is on the banks of the West and East Reservoirs, overlooking more than 42 acres of open water. There are small shops, a gastropub, and cafes on site and a large retail park nearby. Stoke Newington is within a mile offering a large choice of bars and restaurants. There is a trio of beautiful parks too, which include Clissold Park, Finsbury Park and the new Spring Park.

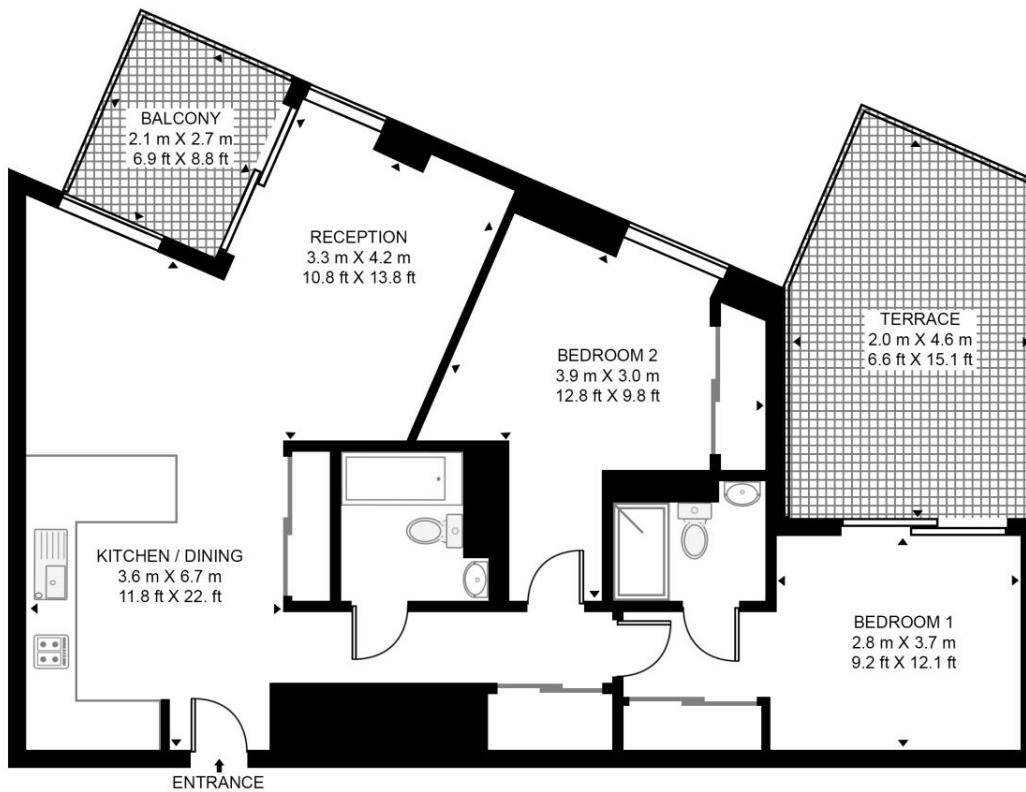
- 2 bed
- 2 bath
- Private balcony & terrace with water views
- 24 hours concierge service
- Residents-only swimming pool & gym
- Co-working space & residents' lounge
- Next to Zone 2 Piccadilly line

Floorplan

920 sq ft | 86 sq m

WILLOWBROOK APARTMENTS

APPROXIMATE GROSS INTERNAL FLOOR AREA 920 SQ.FT (85.5 SQ.M)



SIXTH FLOOR

HDVA

This floor plan has been defined by the RICS Code of Measurement. This floor plan and all others are for approximate representative purposes only and upon usage is agreed to as such by the client.

WWW: hdvirtualart.com | TEL: 0203.974.1567 | EMAIL: info@hdvirtualart.com

Finsbury Park
Woodberry Park,
London N4 2BL
0203 147 1964
salesfinsburypark@eu.jll.com

Urban living, your way.

jll.co.uk/residential

© 2019 Jones Lang LaSalle IP, Inc. All rights reserved. All information contained herein is from sources deemed reliable; however, no representation or warranty is made to the accuracy thereof.

