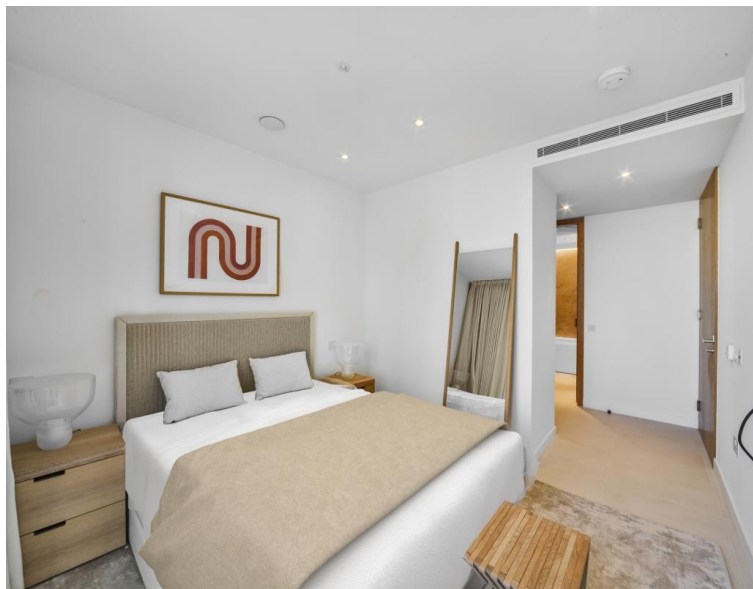


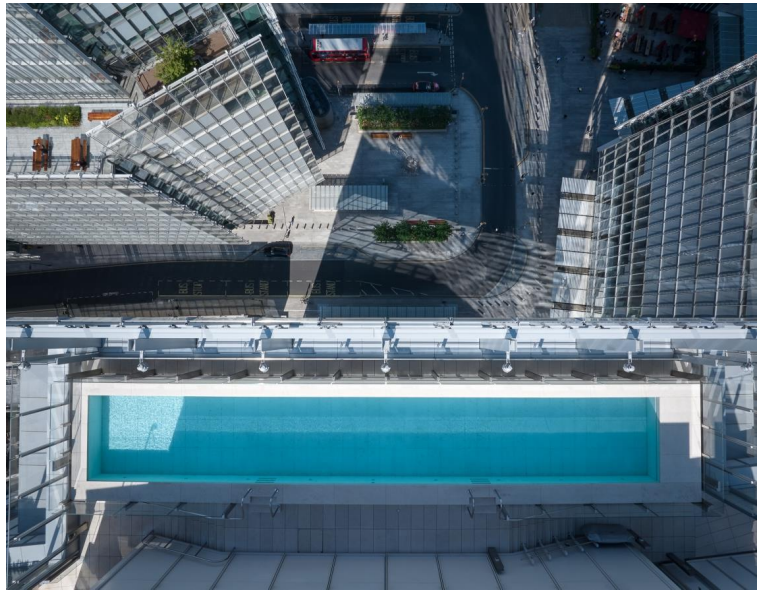


London Bridge Street, London SE1

Price £1,650 per week - Furnished







Description

A selection of 1, 2, and 3 bedroom apartments available in Shard Place, a brand new development in the heart of London Bridge, next to the iconic Shard.

Residents are free to enjoy London's highest heated rooftop swimming pool and sun deck, offering a serene retreat high above the City streets. The private wellness suite complete with a steam room & sauna is found alongside the cutting-edge gym facilities equipped with the latest Technogym equipment. Other outstanding amenities include a stunning double-height orangery with a south-facing terrace and private residents lounge, providing the ideal settings to unwind.

The 15-seat private cinema featuring surround sound and 4K projection is perfect for movie nights. Practical amenities such as dedicated 24hr concierge and secure bike storage ensure a hassle-free lifestyle.

Shard Place's prime location connects residents to the vibrant local area, including The Shard, King's College Campus, the historic Borough Market, and London Bridge Station (0.3 miles).

*pictures are examples of apartments

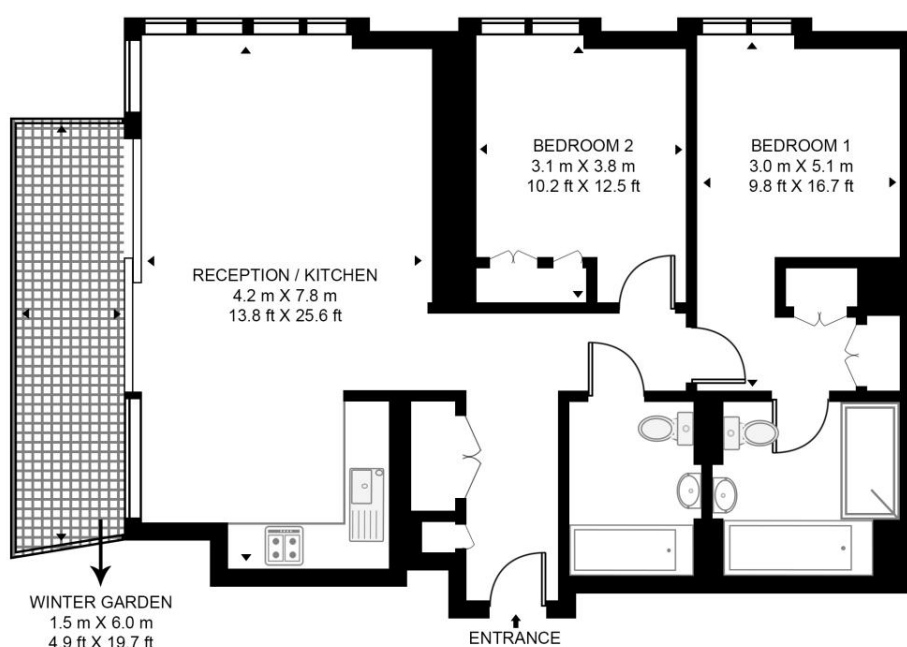
- A selection of 1, 2, and 3 bedroom apartments
- Private winter garden
- 24-hour concierge and security
- Amenities such as a private gym, pool, cinema, residents lounge, and orangery
- Minutes away from London Bridge Station
- Fully furnished with bespoke oak furniture
- EPC: B
- Council tax band: H
- Deposit amount: £9,900.00 (estimate)

Floorplan

1,043 sq ft | 97 sq m

SHARD PLACE, SHARD QUARTER

APPROXIMATE GROSS INTERNAL FLOOR AREA 1043 SQ.FT (97 SQ.M)
(INCLUDING WINTER GARDEN)



FIFTH FLOOR



This floor plan has been defined by the RICS Code of Measurement. This floor plan and all others are for approximate representative purposes only and upon usage is agreed to as such by the client.
WWW: hdvirtualart.com | TEL: 0203.974.1567 | EMAIL: info@hdvirtualart.com

City
25 Walbrook The Walbrook
Building,
London EC4N 8AF
+4420 7337 4000

Urban living, your way.

jll.co.uk/residential

© 2019 Jones Lang LaSalle IP, Inc. All rights reserved. All information contained herein is from sources deemed reliable; however, no representation or warranty is made to the accuracy thereof.

