

# Chaucer Gardens, London E1

Price £595 per week - Furnished







## Description

A stunning 1 bedroom apartment in the luxury Kingwood House at Goodmans Fields, conveniently located on the doorstep of the City of London.

Situated on the 1st floor, this spacious one bedroom apartment is approximately 564 square foot and comprises 1 double bedroom with large fitted wardrobes, high specification, wooden flooring, contemporary kitchen with Siemens appliances, luxury bathroom with Porcelain tiled finish, and huge private terrace with views over the courtyard.

Residents benefit from on-site leisure facilities to include gym, swimming pool and 5 star healthcare centre, private cinema room, business / conference facilities and 24 hour concierge. Approximately 0.1 mile from Aldgate East and located in Zone 1.

We understand that cooling / heating is delivered via a communal system for which separate charges apply.

Rent is payable on a monthly basis and you may be required to pay more than a month's rent in advance, depending on your circumstances. You will be required to pay a 1 week holding de

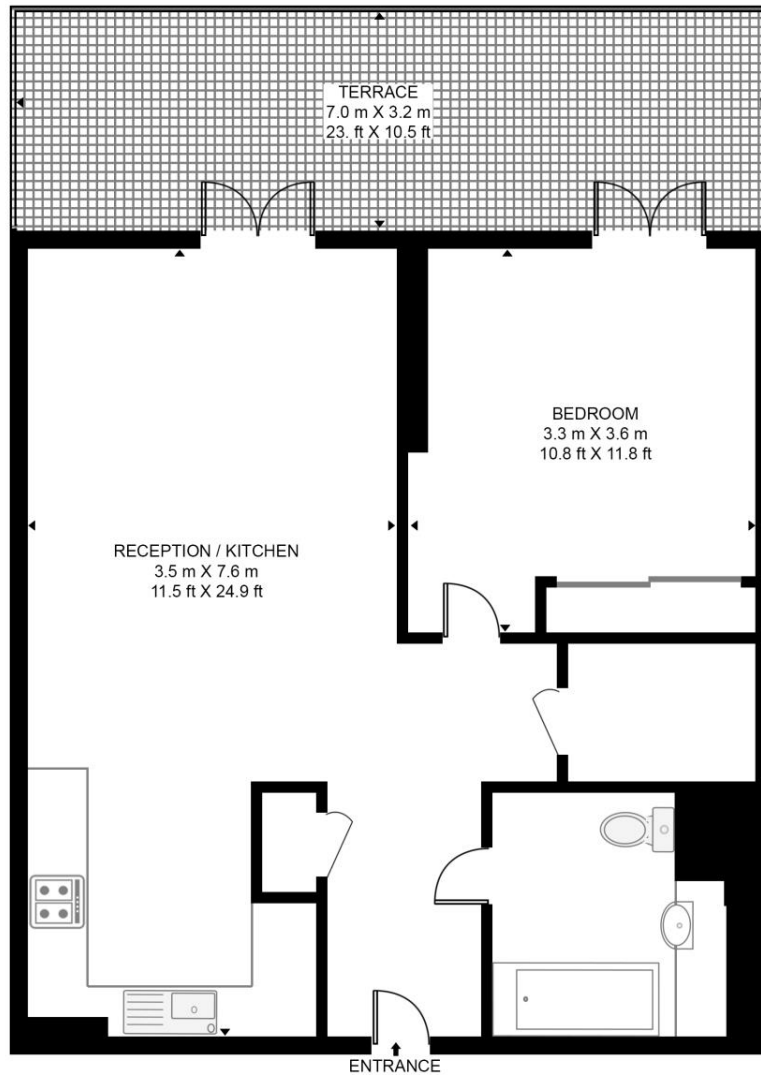
- 1 Bedroom
- 1 Bathroom
- 1st floor
- Private Terrace
- 24 Hour concierge
- Gym
- 0.1 miles from Aldgate East Station
- Approx 564 sq ft (52.4 sq m)
- Furnished
- EPC: B

# Floorplan

564 sq ft | 52 sq m

## KINGWOOD HOUSE, GOODMAN'S FIELD

APPROXIMATE GROSS INTERNAL FLOOR AREA 564 SQ.FT (52.4 SQ.M)



FIRST FLOOR



This floor plan has been defined by the RICS Code of Measurement. This floor plan and all others are for approximate representative purposes only and upon usage is agreed to as such by the client.  
WWW: [hdvirtualart.com](http://hdvirtualart.com) | TEL: 0203.974.1567 | EMAIL: [info@hdvirtualart.com](mailto:info@hdvirtualart.com)

City  
25 Walbrook The Walbrook  
Building,  
London EC4N 8AF  
+4420 7337 4000

*Urban living, your way.*

[jll.co.uk/residential](http://jll.co.uk/residential)

© 2019 Jones Lang LaSalle IP, Inc. All rights reserved. All information contained herein is from sources deemed reliable; however, no representation or warranty is made to the accuracy thereof.

