



# *The Penthouses*

at Southbank Tower, London SE1





*Two beautifully designed penthouses located in one of London's most iconic landmarks.*

## Description

Two duplex Penthouses available sold as seen, located in the heart of Southbank. The floor to ceiling windows provide stunning, panoramic city and River Thames views.

Arranged over two floors, together with a private roof terrace, the penthouses provide the perfect setting for entertaining with amazing views of the capital's skyline from the Portland stone of St Paul's Cathedral to the shimmering glass and steel facades of the City, The Shard and the London Eye.

The development boasts a luxury spa, gym, swimming pool, residents' cinema and a 24-hour concierge. In addition, there is one of the highest residential sky gardens in London with extraordinary City views to be found on the 10th Floor. Residents can take advantage of booking the private lounge areas or meeting spaces for events and guests.

Southbank Tower puts you at the very centre of all that this vibrant area has to offer. Conveniently located for the City (0.5 miles from Blackfriars), and within easy reach of Waterloo (0.4 miles) and Southwark Station (0.4 miles). Whether on foot, by road, or rail, the rest of the capital and beyond is within easy reach, including City Airport in just 35 minutes by rail which facilitates fast and convenient European travel.

- 2 Penthouse Apartments
- Stunning panoramic City views
- Duplex apartments
- Roof Terrace and Sky Garden
- Luxury residents' spa, gym and swimming pool
- 24-hour concierge service
- Over 4,000 sq ft of customisable open space
- 0.4 mile London Waterloo station
- Leasehold

Price on application



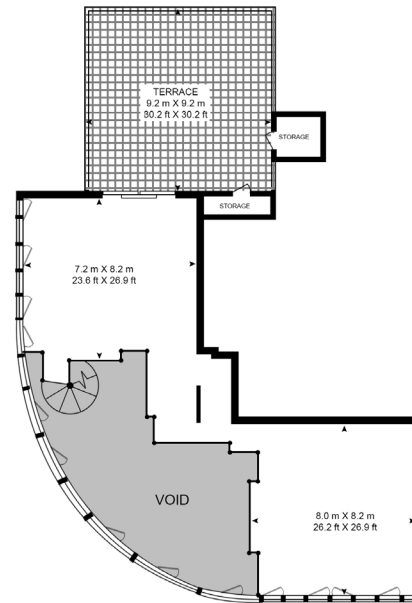
*Southbank Tower* London SE1



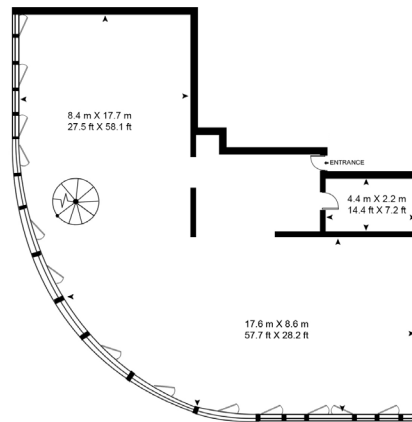




# Penthouse 1



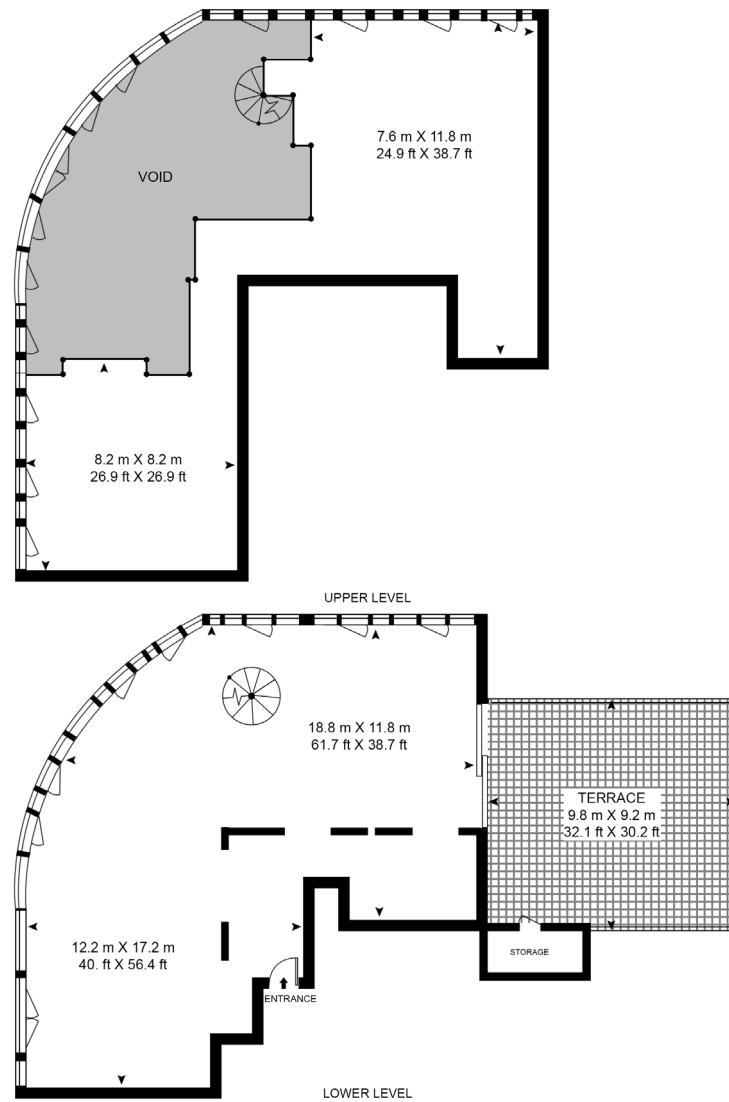
UPPER LEVEL



LOWER LEVEL



# Penthouse 2





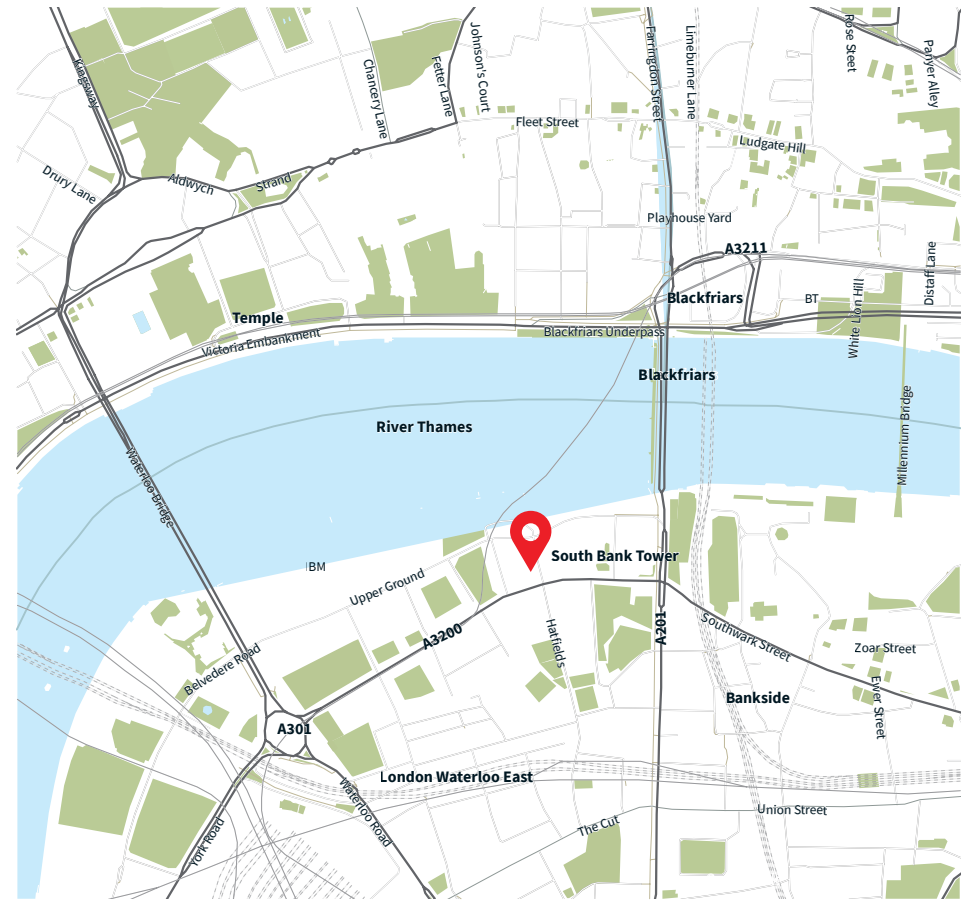


*Southbank Tower* London SE1





## Location



Southbank Tower

London SE1



*Sales | Lettings | New homes | Property management*

**JLL City**

The Walbrook Building  
25 Walbrook  
London  
EC4N 8AF  
020 7248 6040  
salescity@eu.jll.com

*Urban living, your way.*

*[jll.co.uk/residential](http://jll.co.uk/residential)*

© 2020 Jones Lang LaSalle IP, Inc. All rights reserved. All information contained herein is from sources deemed reliable; however, no representation or warranty is made to the accuracy thereof.

Images are computer generated and are for illustrative purposes only

