



## Casson Square, London SE1

Price £1,325 per week - Furnished







## Description

A 12th floor 2 bedroom apartment in the sought after 8 Casson Square, a luxury development moments from Waterloo Station, SE1.

This double aspect 2 bedroom apartment is situated on the 12th floor and boasts stunning South / Eastern views towards The Shard. The apartment comprises 2 double bedrooms with large fitted wardrobes to each, living area with a fully fitted open plan kitchen to include Miele and Siemens appliances, balcony with stunning views, wood flooring and excellent storage space. The property has a high specification throughout featuring comfort cooling, underfloor heating and smart home technology.

The development benefits from top of the range amenities which include an on-site gym, swimming pool with spa, exclusive resident's lounge and 24-hour concierge. 8 Casson Square is in the heart of Southbank and on the doorstep of Waterloo Station (0.2 miles) and moments from the iconic London Eye. The City of London is within easy reach as is London's famous West End.

We understand that cooling / heating is delivered via a communal system for which separate charges apply.

Council tax band: G. Rent is payable on a monthly basis and you may be required to pay more than a month's rent in advance, depending on your circumstances. You will be required to pay a 1 week holding deposit following a successful offer. Tenancies with annual rents up to £50,000 will require a 5 weeks' security deposit, while those exceeding this threshold will require a 6 weeks' deposit. Utility bills, council tax, telephone line and broadband are not included in the rent. As well as paying the rent, you may also be required to make some additional permitted payments. If your tenancy does not qualify as an AST, additional fees may apply. Please visit [jll.co.uk/fees](http://jll.co.uk/fees) for details of fees that may be payable when renting a property. To check broadband and mobile phone coverage please visit Ofcom here [ofcom.org.uk/phones-telecoms-and-internet/advice-for-consumers/advice/ofcom-checker](http://ofcom.org.uk/phones-telecoms-and-internet/advice-for-consumers/advice/ofcom-checker)

- 2 Bedrooms
- 2 Bathrooms
- 12th floor
- Underfloor heating
- 24 hour concierge
- On-site leisure facilities including spa, cinema and gym
- 0.2 miles from Waterloo Station
- Approx. 894 sq ft (83.1 sq m)
- Leasehold
- Furnished

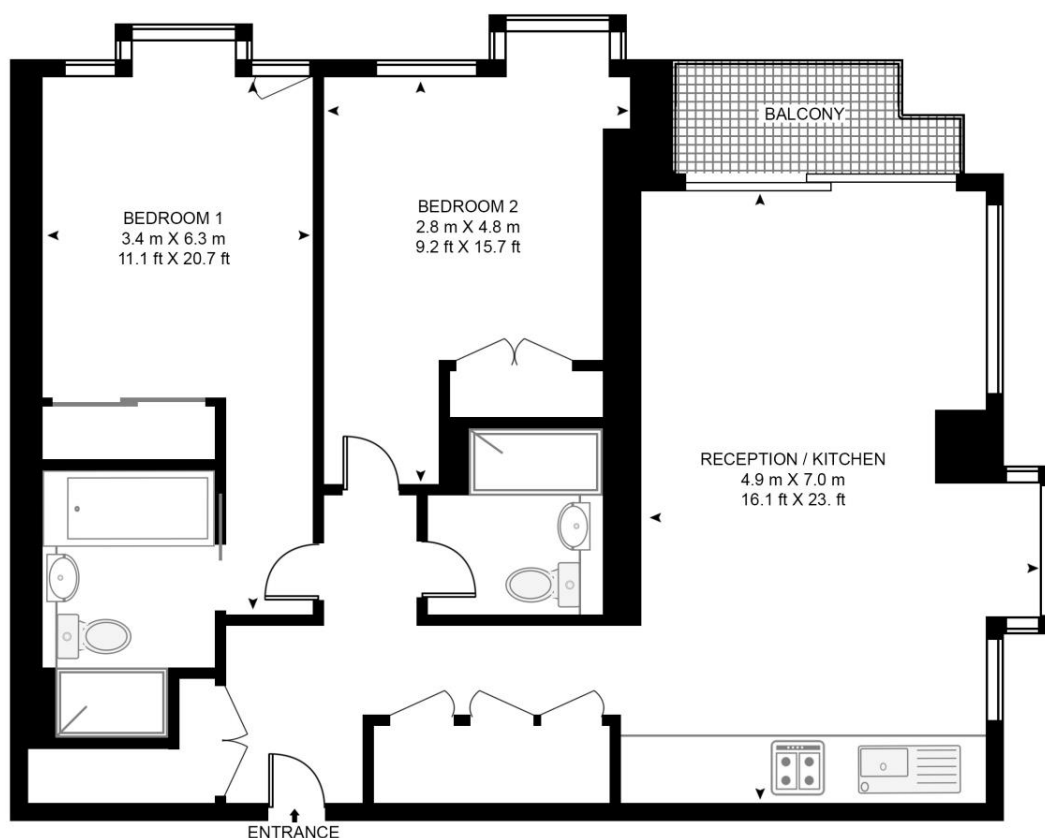


# Floorplan

894 sq ft | 83 sq m

## CASSON SQUARE

APPROXIMATE GROSS INTERNAL FLOOR AREA 894 SQ.FT (83.1 SQ.M)



## TWELFTH FLOOR



This floor plan has been defined by the RICS Code of Measurement. This floor plan and all others are for approximate representative purposes only and upon usage is agreed to as such by the client.

WWW: [hdvirtualart.com](http://hdvirtualart.com) | TEL: 0203.974.1567 | EMAIL: [info@hdvirtualart.com](mailto:info@hdvirtualart.com)

City  
25 Walbrook The Walbrook  
Building,  
London EC4N 8AF  
+4420 7337 4000

*Urban living, your way.*

[jll.co.uk/residential](http://jll.co.uk/residential)

© 2019 Jones Lang LaSalle IP, Inc. All rights reserved. All information contained herein is from sources deemed reliable; however, no representation or warranty is made to the accuracy thereof.

