

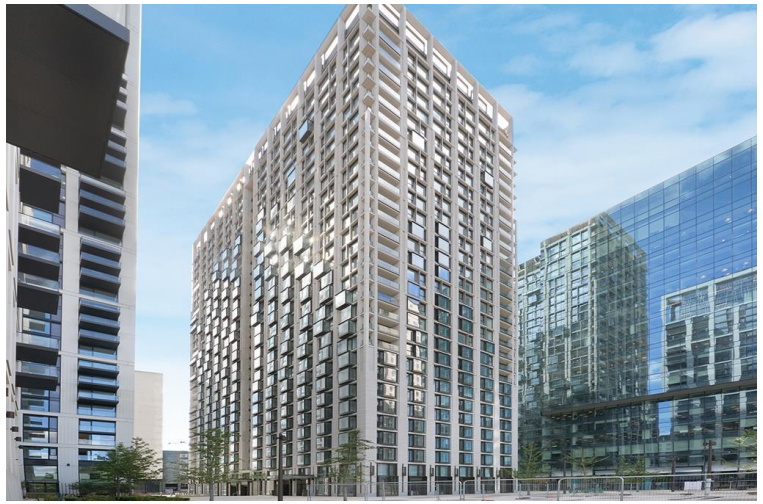
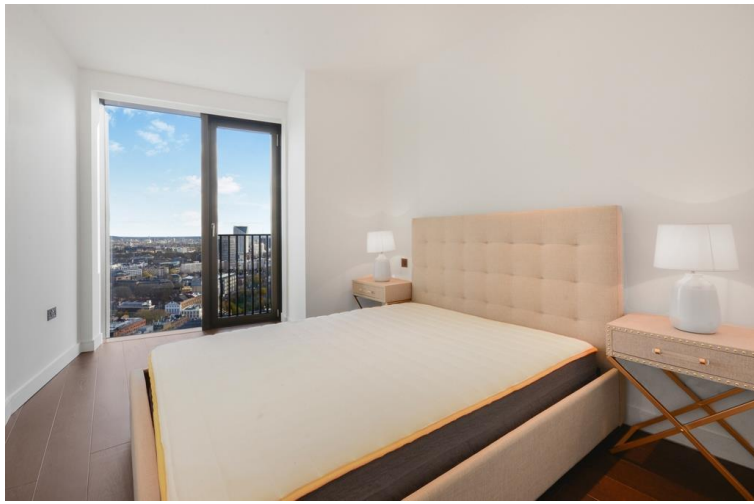
## Casson Square, London SE1

Price £875 per week - Furnished









## Description

A truly stunning 27th floor 1 bedroom apartment in 8 Casson Square, a luxury development moments from Waterloo Station

Offered fully furnished, this 1 bedroom apartment is situated on the 27th floor and comprises large double bedroom with fully fitted wardrobes, spacious living area with floor to ceiling glazing, stunning Eastern views towards The Shard and the City of London, fully fitted open plan kitchen to include Miele and Siemens appliances, contemporary bathroom, wood flooring and excellent storage space. The property has a high specification throughout featuring comfort cooling, underfloor heating and smart home technology.

The development benefits from top of the range amenities which include an on-site gym, swimming pool with spa, exclusive resident's lounge and 24-hour concierge. 8 Casson Square is in the heart of Southbank and on the doorstep of Waterloo Station

Rent is payable on a monthly basis and you may be required to pay more than a month's rent in advance, depending on your circumstances. You will be required to pay a 1 week holding deposit following a successful offer. Utility bills, council tax, telephone line and broadband are not included in the rent. As well as paying the rent, you may also be required to make some additional permitted payments. If your tenancy does not qualify as an AST, additional fees may apply. Please visit [jll.co.uk/fees](http://jll.co.uk/fees) for details of fees which may be payable when renting a property.

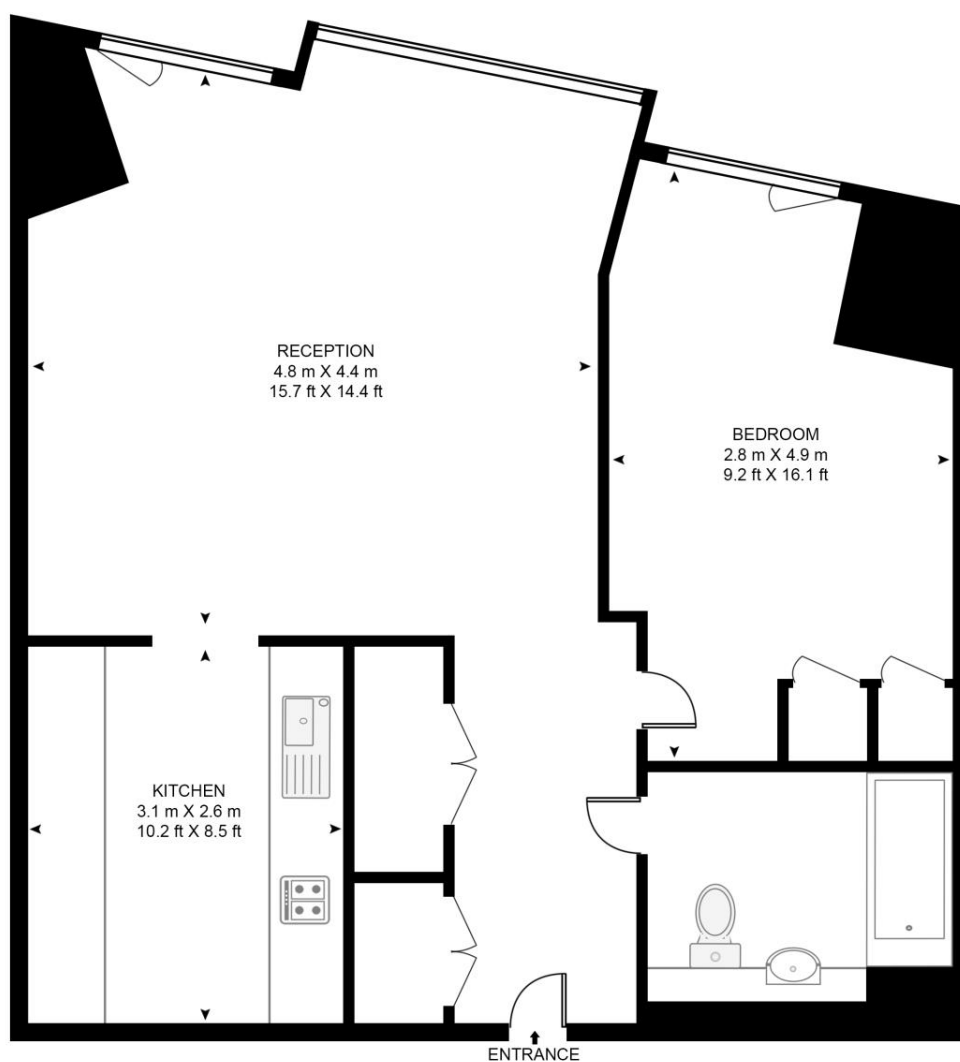
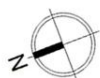
- 1 Bedroom
- 1 Bathroom
- 27th Floor
- Eastern views towards The Shard
- Luxury fitted kitchen with Miele appliances
- 24 hour concierge
- Approx. 626 sq ft (58.2 sq m)
- 0.2 mile from Waterloo Station
- Luxury residents facilities
- Furnished

# Floorplan

626 sq ft | 58 sq m

## CASSON SQUARE, SE1

APPROXIMATE GROSS INTERNAL FLOOR AREA 626 SQ.FT (58.2 SQ.M)



## TWENTY SEVENTH FLOOR

**HDVA**

This floor plan has been defined by the RICS Code of Measurement. This floor plan and all others are for approximate representative purposes only and upon usage is agreed to as such by the client.

WWW: [hdvirtualart.com](http://hdvirtualart.com) | TEL: 0203.974.1567 | EMAIL: [info@hdvirtualart.com](mailto:info@hdvirtualart.com)

City  
25 Walbrook The Walbrook  
Building,  
London EC4N 8AF  
+4420 7337 4000

*Urban living, your way.*

[jll.co.uk/residential](http://jll.co.uk/residential)

© 2019 Jones Lang LaSalle IP, Inc. All rights reserved. All information contained herein is from sources deemed reliable; however, no representation or warranty is made to the accuracy thereof.

