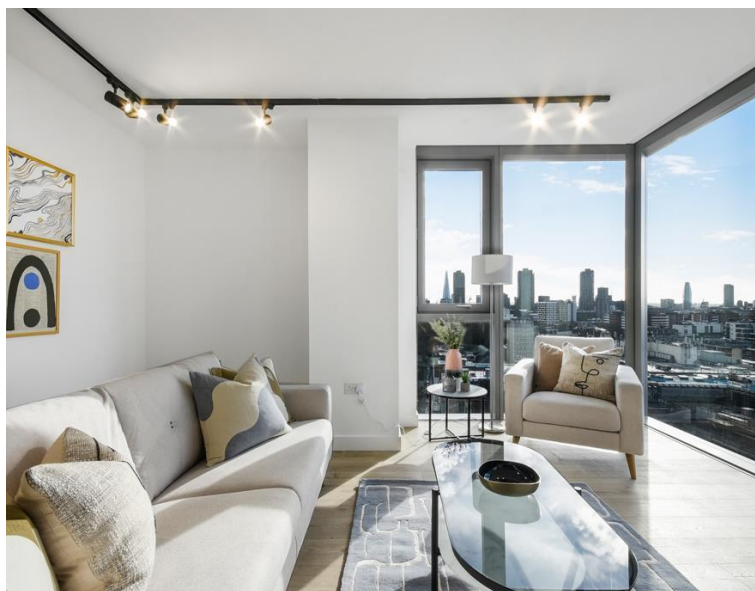


Bollinder Place, London EC1V

Price £915 per week - Furnished







Description

A stunning 2 bedroom apartment in the brand new and sought after 250 City Road, by Berkeley.

This apartment offers approximately 908 square feet of living space. Situated on the 11th floor, the property comprises of a spacious open plan reception with contemporary fitted kitchen featuring composite stone work surfaces, with stunning views across the London Skyline, master bedroom with fitted wardrobes and en suite bathroom including additional separate shower, second double bedroom with fitted wardrobes, contemporary shower room and wood flooring.

The development boasts a high specification with comfort cooling / heating. With a 24 hour concierge, a private resident's lounge, gym, pool & spa. Ideally situated for Shoreditch (0.6 miles), Old Street station (0.4 miles).

We understand that heating, hot water and cooling is delivered via a communal system for which separate charges apply.

Rent is payable on a monthly basis and you may be required to pay more than a month's rent in advance, depending on your circumstances. You will be required to pay a 1 week holding deposit following a successful offer. Utility bills, council tax, telephone line and broadband are not included in the rent. As well as paying the rent, you may also be required to make some additional permitted payments. If your tenancy does not qualify as an AST, additional fees may apply. Please visit jll.co.uk/fees for details of fees which may be payable when renting a property.

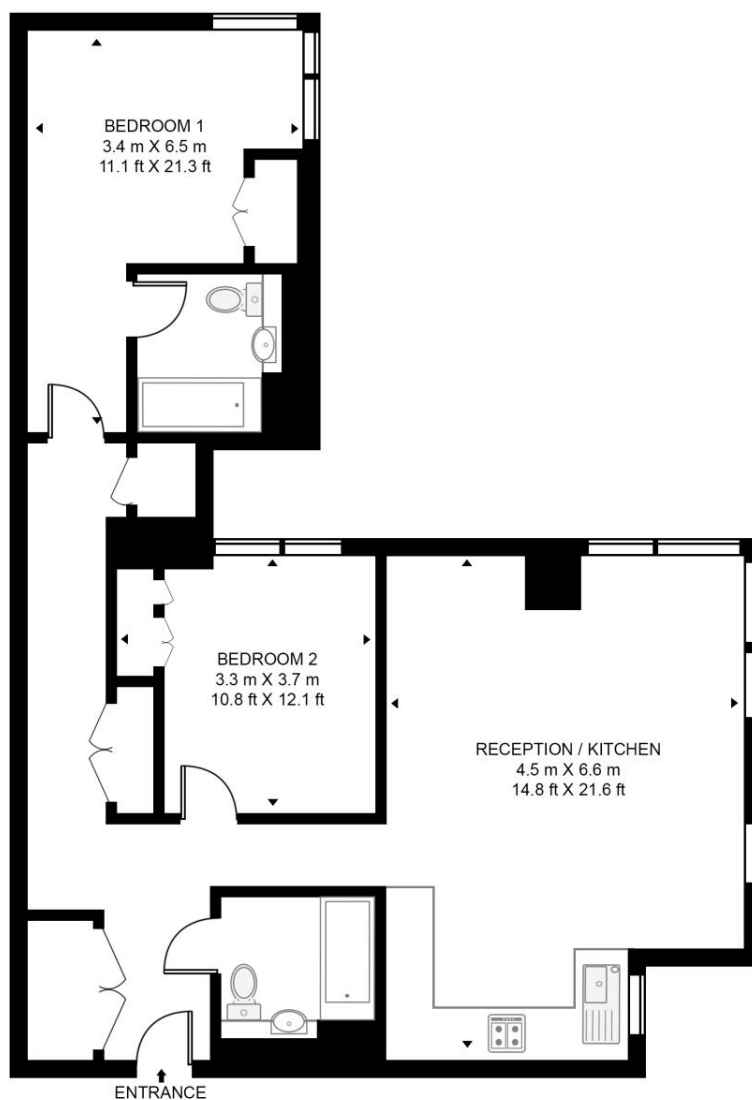
- 2 Bedrooms
- 2 Bathrooms
- 24 Hour concierge
- On-site leisure facilities inc cinema, pool and spa
- 0.4 miles from Old Street Station
- Approx. 908 sq ft (84.4 sq m)
- EPC: B
- Council tax: Band F
- Deposit amount: £4,575.00 (estimate) and an initial holding deposit of 1 week's rent is

Floorplan

908 sq ft | 84 sq m

VALENCIA TOWER, 3 BOLLINDER PLACE

APPROXIMATE GROSS INTERNAL FLOOR AREA 908 SQ.FT (84.4 SQ.M)



ELEVENTH FLOOR



This floor plan has been defined by the RICS Code of Measurement. This floor plan and all others are for approximate representative purposes only and upon usage is agreed to as such by the client.

WWW: hdvirtualart.com | TEL: 0203.974.1567 | EMAIL: info@hdvirtualart.com

City
25 Walbrook The Walbrook
Building,
London EC4N 8AF
+4420 7337 4000

Urban living, your way.

jll.co.uk/residential

© 2019 Jones Lang LaSalle IP, Inc. All rights reserved. All information contained herein is from sources deemed reliable; however, no representation or warranty is made to the accuracy thereof.

