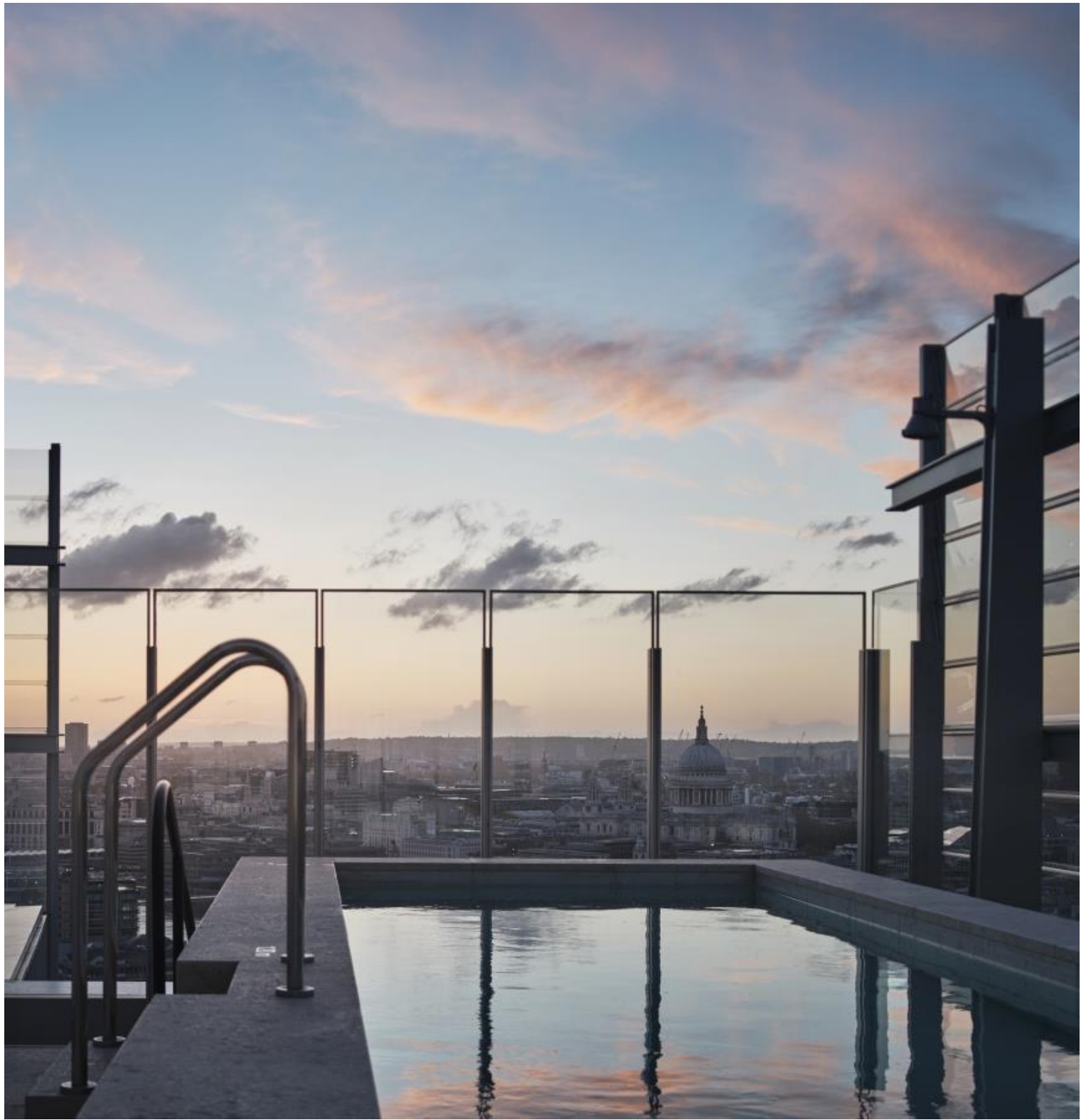


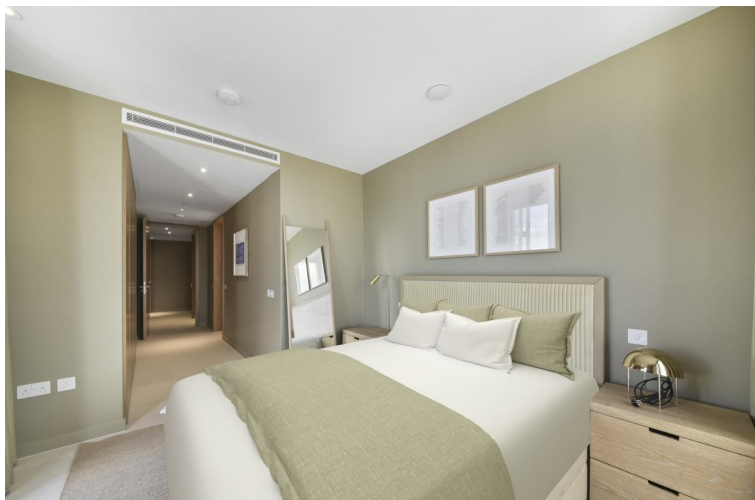


London Bridge Street, London SE1

Price £2,095 per week - Furnished







Description

TWO WEEKS RENT FREE!*

A selection of 1, 2, and 3 bedroom apartments available in Shard Place, a brand new development in the heart of London Bridge, next to the iconic Shard.

Residents are free to enjoy London's highest heated rooftop swimming pool and sun deck, offering a serene retreat high above the City streets. The private wellness suite complete with a steam room and sauna is found alongside the cutting-edge gym facilities equipped with the latest Technogym equipment. Other outstanding amenities include a stunning double-height orangery with a south-facing terrace and private residents lounge, providing the ideal settings to unwind.

The 15-seat private cinema featuring surround sound and 4K projection is perfect for movie nights. Practical amenities such as dedicated 24hr concierge & secure bike storage ensure a hassle-free lifestyle.

Shard Place's prime location connects residents to the vibrant local area, including The Shard, King's College Campus, the historic Borough Market, and London Bridge Station (0.3 miles).

*pictures are examples of apartments

We understand that cooling / heating is delivered via a communal system for which separate charges apply.

Rent is payable on a monthly basis and you may be required to pay more than a month's rent in advance, depending on your circumstances. You will be required to pay a 1 week holding deposit following a successful offer. Utility bills, council tax, telephone line and broadband are not included in the rent. As well as paying the rent, you may also be required to make some additional permitted payments. If your tenancy does not qualify as an AST, additional fees may apply. Please visit jll.co.uk/fees for details of fees which may be payable when renting a property.

*Terms and conditions apply subject to move in before 23rd December 25

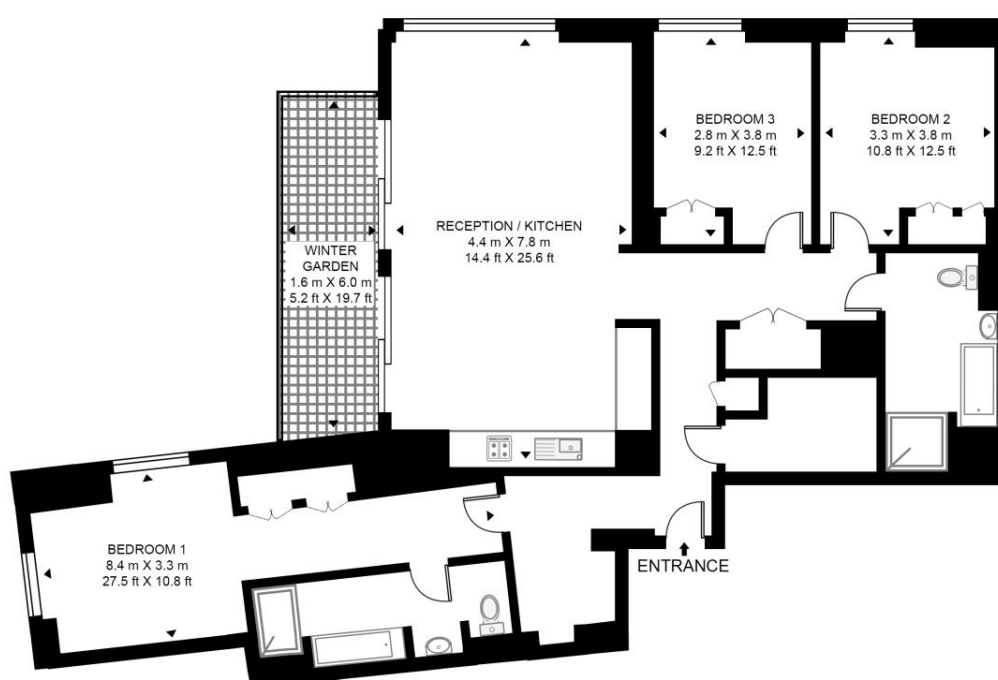
- A selection of 1, 2, and 3 bedroom apartments
- TWO WEEKS RENT FREE*
- *Terms and conditions apply subject to move in before 23rd December 25
- Private winter garden
- 24-hour concierge and security
- Amenities such as a private gym, pool, cinema, residents lounge, and orangery
- Minutes away from London Bridge Station
- Fully furnished with bespoke oak furniture
- EPC: B
- Council tax band: H

Floorplan

1,481 sq ft | 138 sq m

SHARD PLACE, SHARD QUARTER

APPROXIMATE GROSS INTERNAL FLOOR AREA 1481 SQ.FT (137 SQ.M)
(INCLUDING WINTER GARDEN)



TWENTY FIRST FLOOR



This floor plan has been defined by the RICS Code of Measurement. This floor plan and all others are for approximate representative purposes only and upon usage is agreed to as such by the client.
WWW: hdvirtualart.com | TEL: 0203.974.1567 | EMAIL: info@hdvirtualart.com

City
25 Walbrook The Walbrook
Building,
London EC4N 8AF
+4420 7337 4000

Urban living, your way.

jll.co.uk/residential

© 2019 Jones Lang LaSalle IP, Inc. All rights reserved. All information contained herein is from sources deemed reliable; however, no representation or warranty is made to the accuracy thereof.

