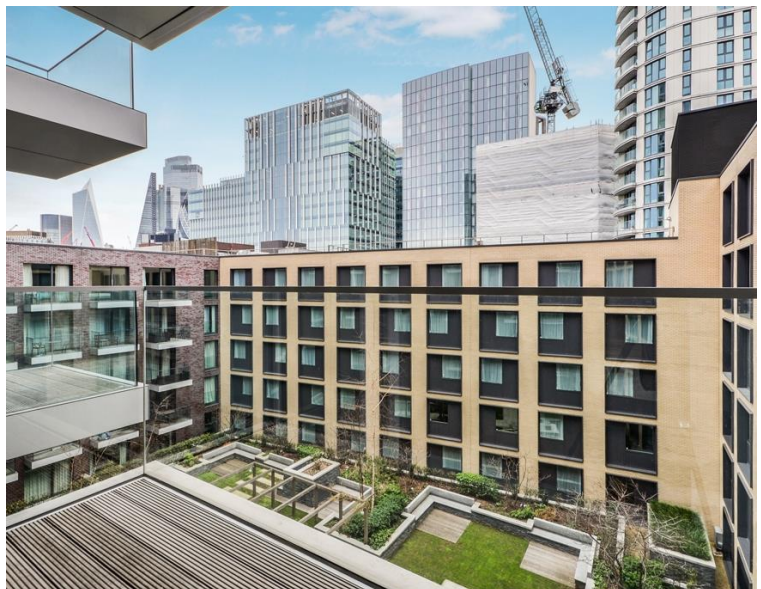




Piazza Walk, London E1

Price £550 per week - Furnished







Description

A 5th floor studio apartment in Satin House at Goodmans Fields, conveniently located on the doorstep of the City of London.

This spacious studio apartment is approximately 411 sq ft and comprises open plan living / sleeping area, large fitted wardrobes, balcony overlooking the landscaped courtyard, high specification with solid wooden flooring, contemporary kitchen with Siemens appliances, luxury shower room excellent storage space.

Benefits include on-site leisure facilities with gym, swimming pool, healthcare centre, private cinema room, business / conference facilities and 24 hour concierge. Approximately 0.1 mile from Aldgate East and located in Zone 1.

Rent is payable on a monthly basis and you may be required to pay more than a month's rent in advance, depending on your circumstances. You will be required to pay a 1 week holding deposit following a successful offer. Utility bills, council tax, telephone line and broadband are not included in the rent. As well as paying the rent, you may also be required to make some additional permitted payments. If your tenancy does not qualify as an AST, additional fees may apply. Please visit jll.co.uk/fees for details of fees which may be payable when renting a property.

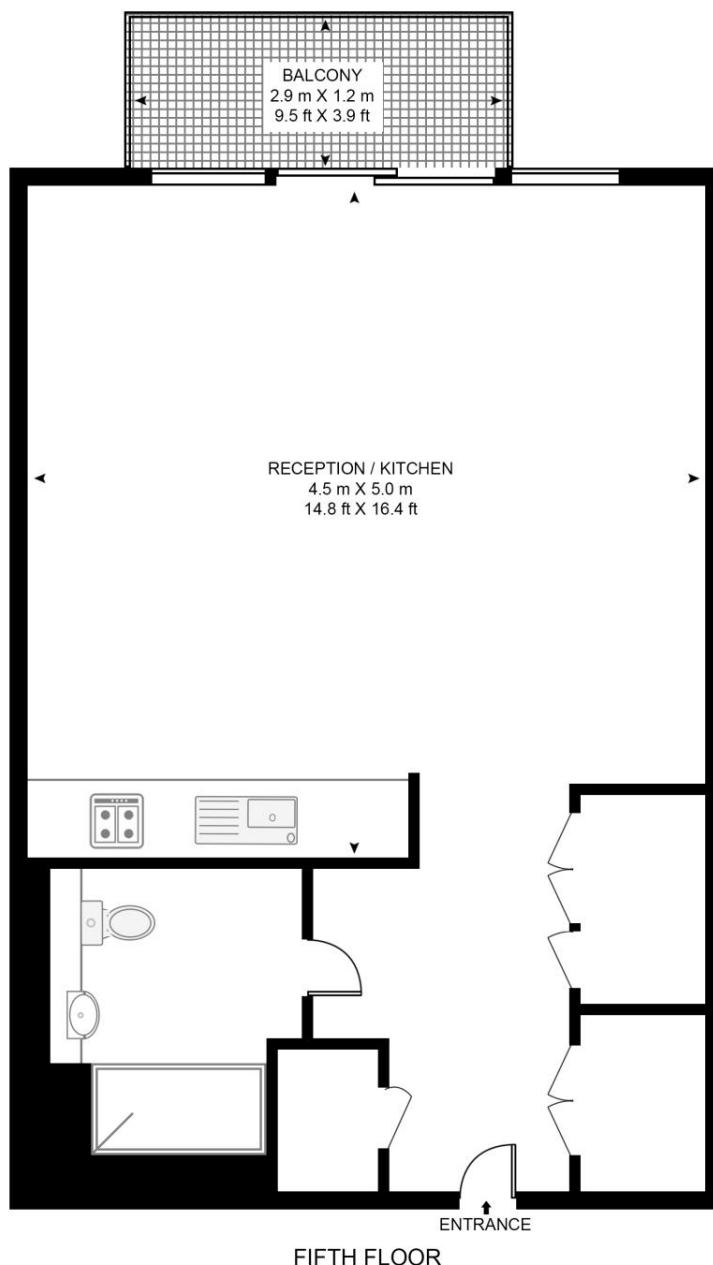
- Studio
- 1 Bathroom
- 5th Floor
- Balcony
- Contemporary kitchen with Siemens appliances
- Onsite gym and pool
- 0.1 mile to Aldgate East Station
- Approx. 411 sq ft (38.2 sq m)
- EPC: B
- Council tax: Band D

Floorplan

411 sq ft | 38 sq m

SATIN HOUSE, GOODMAN'S FIELD

APPROXIMATE GROSS INTERNAL FLOOR AREA 411 SQ.FT (38.2 SQ.M)



HDVA

This floor plan has been defined by the RICS Code of Measurement. This floor plan and all others are for approximate representative purposes only and upon usage is agreed to as such by the client.

WWW: hdvirtualart.com | TEL: 0203.974.1567 | EMAIL: info@hdvirtualart.com

City
25 Walbrook The Walbrook
Building,
London EC4N 8AF
+4420 7337 4000

Urban living, your way.

jll.co.uk/residential

© 2019 Jones Lang LaSalle IP, Inc. All rights reserved. All information contained herein is from sources deemed reliable; however, no representation or warranty is made to the accuracy thereof.

