

The Heron, London EC2Y

£1,000,000 Leasehold







Description

Set on the 14th floor and extending to a well-proportioned 907 sq ft of living and entertaining space, the apartment offers a bright dual aspect open plan style reception room with floor to ceiling windows and access to a large balcony spanning both the reception and principal bedroom.

The principal bedroom suite offers a range of built-in wardrobes and access to an en-suite bathroom. A further bedroom, with a range of built in wardrobes, family bathroom and storage cupboard are located off a welcoming hallway.

The development is located in the heart of the City of London and is within easy reach of stations such as Bank (0.5 miles) and Moorgate (0.2 miles). The Heron benefits from an on-site gym, exclusive resident's club and 24 hour concierge.

Leasehold 174 years (exp. 21/03/2199)
Ground Rent: £600 pa
Service Charge: £15,935 pa
Council Tax Band: G
EPC Rating: A

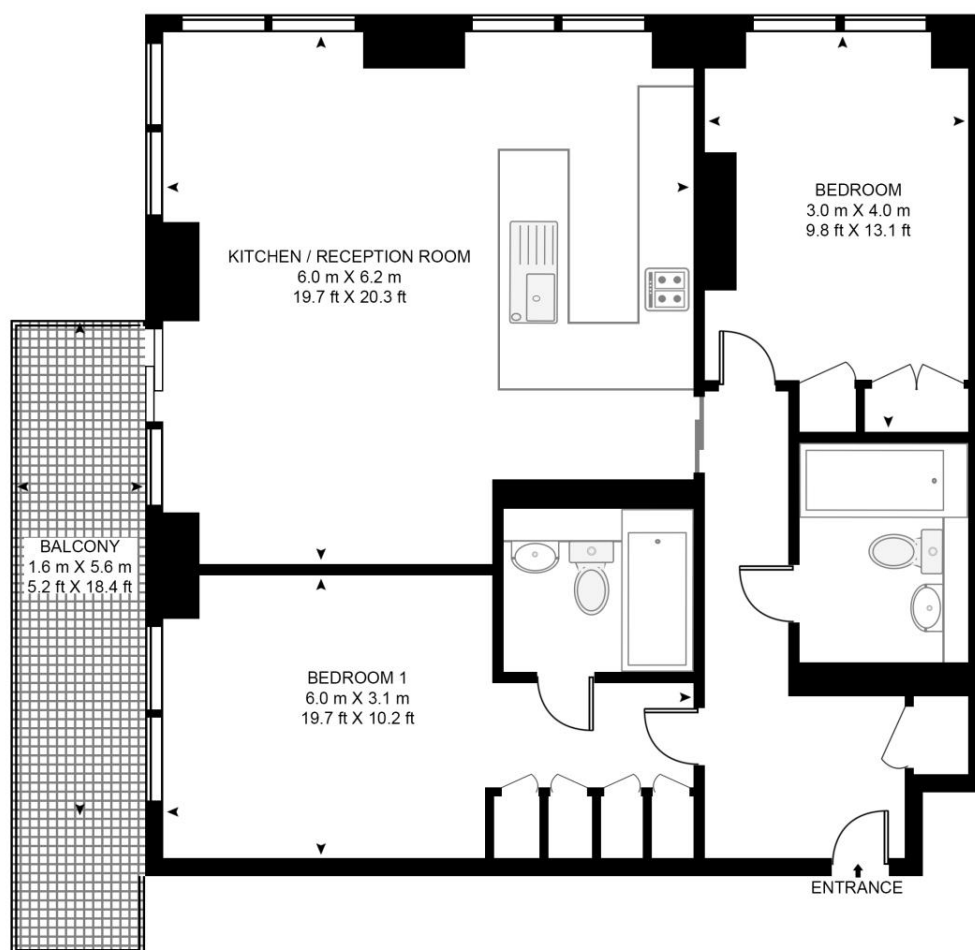
- 2 Double bedrooms
- 2 Bathrooms
- Private balcony
- 14th floor extensive skyline views
- Flowing natural light throughout
- 24hr concierge
- A host of communal facilities including residents gym, and lounge
- Approx. 907 sq ft / 84.3 sq m

Floorplan

907 sq ft | 84 sq m

THE HERON, 5 MOOR LANE

APPROXIMATE GROSS INTERNAL FLOOR AREA 907 SQ.FT (84.3 SQ.M)



FOURTEENTH FLOOR



This floor plan has been defined by the RICS Code of Measurement. This floor plan and all others are for approximate representative purposes only and upon usage is agreed to as such by the client.

WWW: hdvirtualart.com | TEL: 0203.974.1567 | EMAIL: info@hdvirtualart.com

City
25 Walbrook The Walbrook
Building,
London EC4N 8AF
+4420 7337 4000

Urban living, your way.

jll.co.uk/residential

© 2019 Jones Lang LaSalle IP, Inc. All rights reserved. All information contained herein is from sources deemed reliable; however, no representation or warranty is made to the accuracy thereof.

