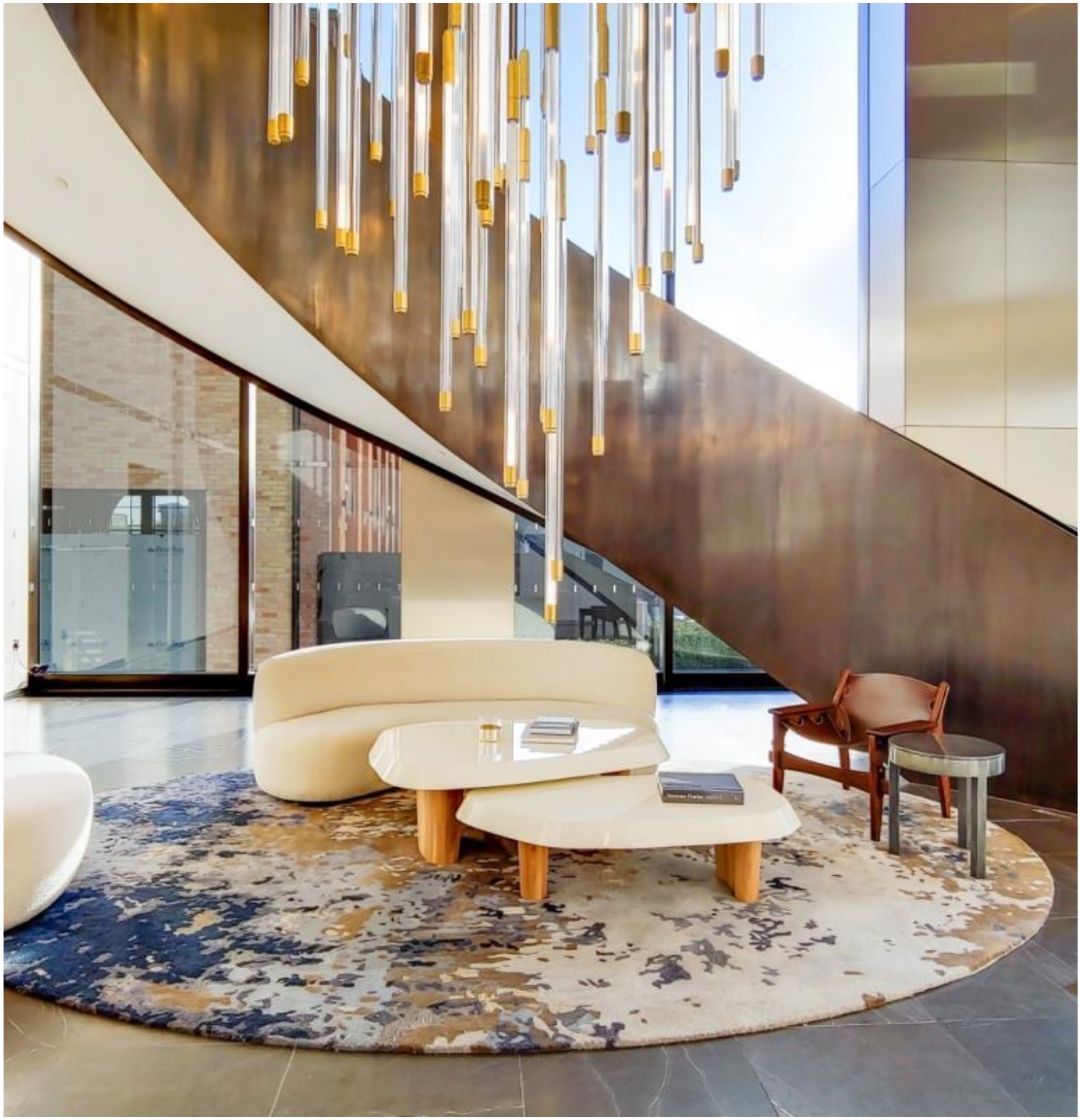
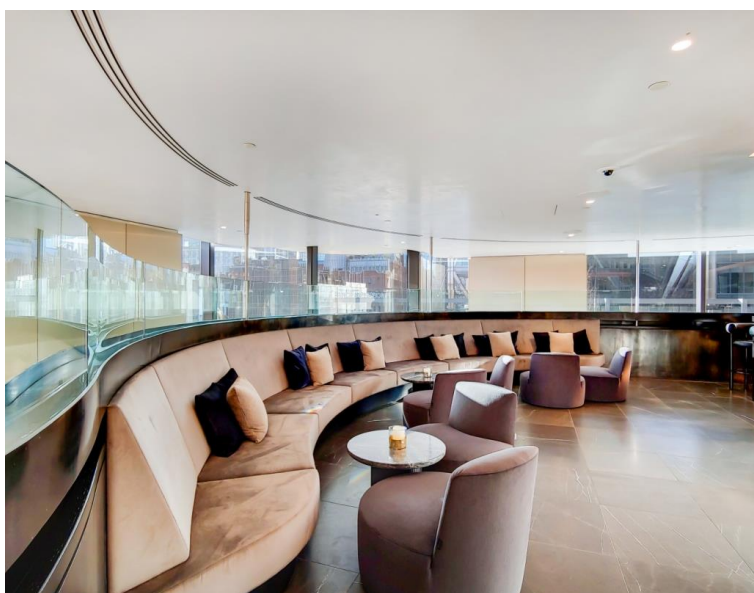
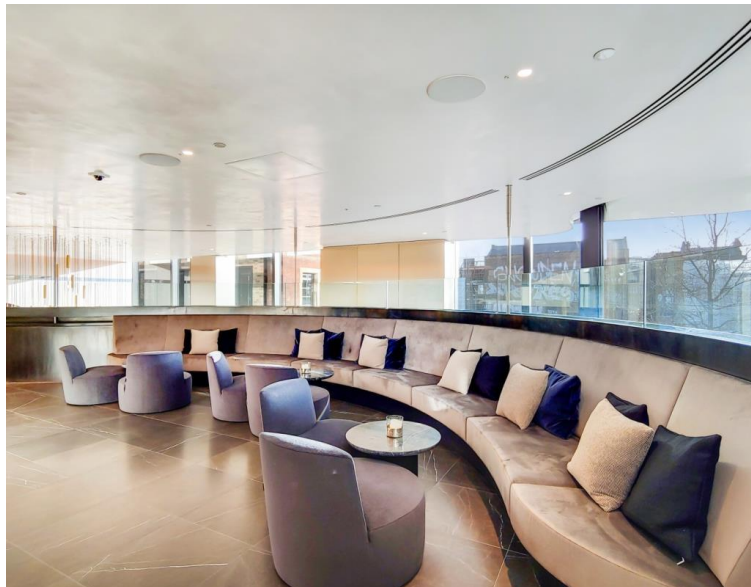
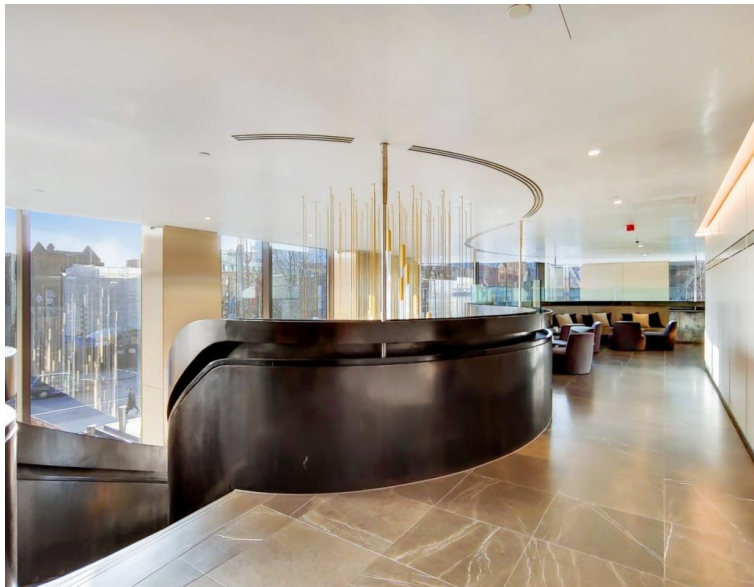


Worship Street, London EC2A

Price £1,100 per week - Furnished







Description

A modern 2 bedroom in the iconic Principal Tower, EC2.

Offered fully furnished, this stunning 2 bedroom apartment is situated on the 13th floor and has spectacular South Eastern views of the City Skyline and on towards Canary Wharf, Stratford and the Olympic Park. The property comprises a spacious open plan reception with fully fitted kitchen, two double bedrooms with fitted wardrobes, two luxury Porcelain bathrooms with under floor heating, large balcony, comfort cooling and heating and oak herringbone flooring.

Principal Tower is in an idyllic location, a short walk to Liverpool Street Station (0.3 miles) as well as Shoreditch High Street Station (0.3 miles). The development boasts excellent amenities including a pool with Jacuzzi, spa, gymnasium, residents' lounge/bar, private cinema room and 24 hour concierge.

We understand that cooling / heating is delivered via a communal system for which separate charges apply.

Rent is payable on a monthly basis and you may be required to pay more than a month's rent in advance, depending on your circumstances. You will be required to pay a 1 week holding de

- 2 Bedrooms
- 2 Bathrooms
- 13th floor
- Private balcony
- On-site leisure facilities including pool, spa and cinema
- 24 hour concierge
- 0.3 miles from Liverpool Street Station
- Approx 876 sq ft (81.4 sq m)
- Furnished
- EPC: B

Floorplan

876 sq ft | 81 sq m

City
25 Walbrook The Walbrook
Building,
London EC4N 8AF
+4420 7337 4000

Urban living, your way.

jll.co.uk/residential

© 2019 Jones Lang LaSalle IP, Inc. All rights reserved. All information contained herein is from sources deemed reliable; however, no representation or warranty is made to the accuracy thereof.

