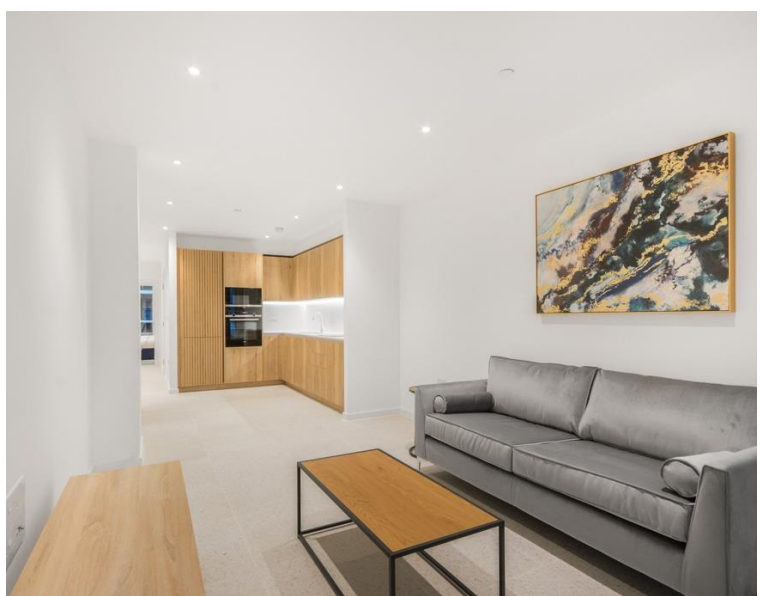
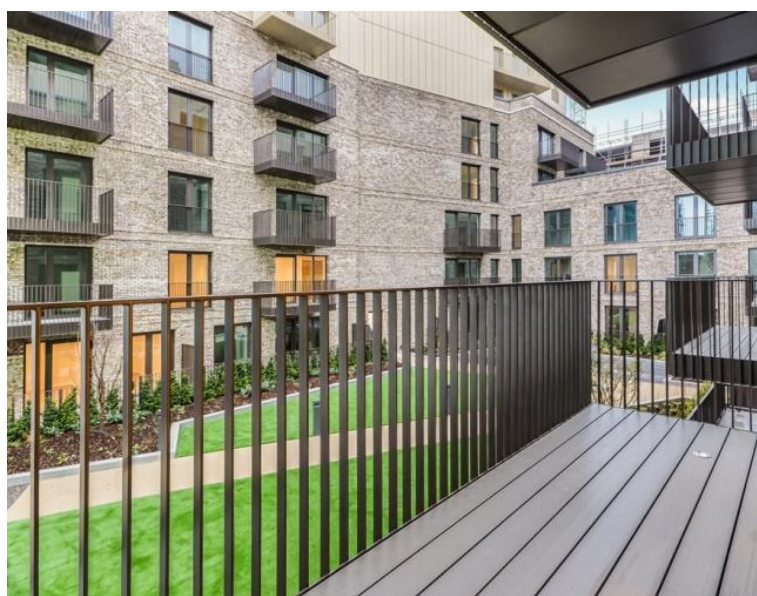




Sidney Street, London E1

Price £715 per week - Furnished







Description

A spacious, double aspect 2 bedroom apartments in Georgette Apartments, part of the sought after Silk District, E1, well connect for the City of London.

Offered fully furnished, this spacious 2 bedroom apartment boasts approximately 842 sq ft and comprises a large open plan living / dining area, private balcony overlooking the courtyard, 2 double bedrooms with fitted wardrobes to master, 2 luxury bathrooms, fully fitted kitchen with Oak effect finish, tiled flooring and excellent storage space.

The Silk District is a development from Mount Anvil and offers residents fantastic amenities which include 24 hour concierge, on site gym, cinema room, rooftop gardens and resident's lounge. The development is within easy reach of the City of London and in the heart of the Whitechapel regeneration area, approximately 0.3 miles from Whitechapel Underground / Crossrail station.

Rent is payable on a monthly basis and you may be required to pay more than a month's rent in advance, depending on your circumstances. You will be required to pay a 1 week holding deposit following a successful offer. Utility bills, council tax, telephone line and broadband are not included in the rent. As w

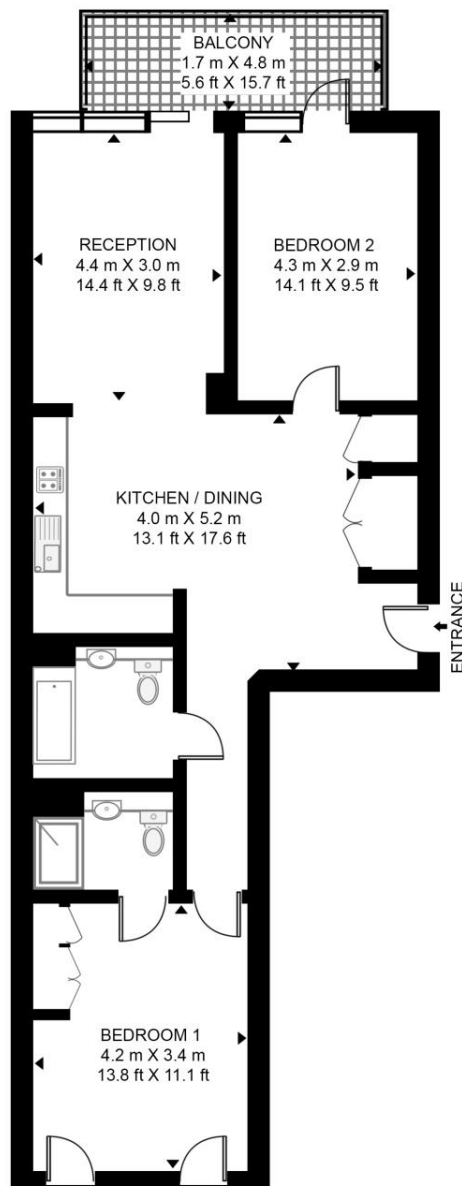
- 2 Bedrooms
- 2 Bathrooms
- 2nd Floor
- Private Balcony
- On-site amenities including cinema, gym and resident's lounge
- 24 hour concierge
- 0.3 miles from Whitechapel Station
- Approx. 842 sq ft (78.2 sq m)
- Furnished
- EPC: B

Floorplan

842 sq ft | 78 sq m

GEORGETTE APARTMENTS, SILK DISTRICT

APPROXIMATE GROSS INTERNAL FLOOR AREA 842 SQ.FT (78.2 SQ.M)



SECOND FLOOR

HDVA

This floor plan has been defined by the RICS Code of Measurement. This floor plan and all others are for approximate representative purposes only and upon usage is agreed to as such by the client.

WWW: hdvirtualart.com | TEL: 0203.974.1567 | EMAIL: info@hdvirtualart.com

City
25 Walbrook The Walbrook
Building,
London EC4N 8AF
+4420 7337 4000

Urban living, your way.

jll.co.uk/residential

© 2019 Jones Lang LaSalle IP, Inc. All rights reserved. All information contained herein is from sources deemed reliable; however, no representation or warranty is made to the accuracy thereof.

