

## Principal Place, London EC2A

Price £995 per week - Furnished







## Description

A luxury 2 bedroom in the sought after Principal Tower, EC2, conveniently located for Liverpool Street Station.

Furnished to a high standard, this stunning 2 bedroom apartment has a South Westerly aspect. The property comprises a spacious open plan reception with fully fitted kitchen, two double bedrooms with fitted wardrobes, two luxury Porcelain bathrooms with under floor heating, large balcony, comfort cooling and heating and oak herringbone flooring.

Principal Tower is in an idyllic location, a short walk to Liverpool Street Station (0.3 miles) as well as Shoreditch High Street Station (0.3 miles). The development boasts excellent amenities including a pool with Jacuzzi, spa, gymnasium, residents' lounge/bar, private cinema room and 24 hour concierge.

We understand that cooling / heating is delivered via a communal system for which separate charges apply.

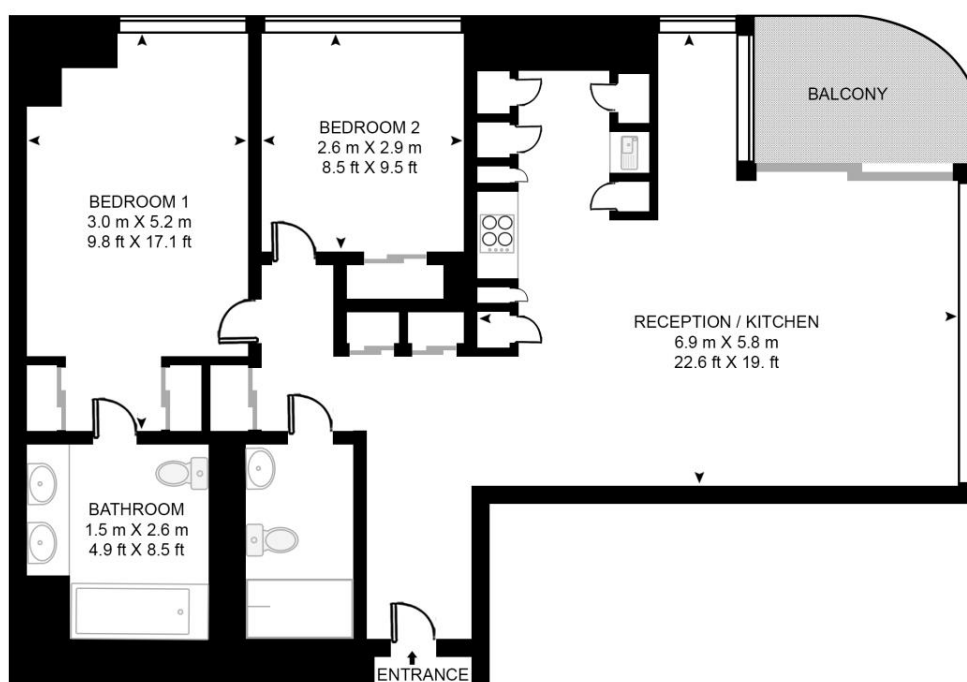
Rent is payable on a monthly basis and you may be required to pay more than a month's rent in advance, depending on your circumstances. You will be required to pay a 1 week holding deposit following a successful offer. Utility bills, council tax, tele

- 2 Bedrooms
- 2 Bathrooms
- 4th floor
- Private balcony
- On-site leisure facilities including pool, spa and cinema
- 24 hour concierge
- 0.3 miles from Liverpool Street Station
- Approx 876 sq ft (81.4 sq m)
- Furnished
- EPC: B

# Floorplan

876 sq ft | 81 sq m

**PRINCIPAL TOWER, 2 PRINCIPAL PLACE, WORSHIP STREET, LONDON, EC2D**  
APPROXIMATE GROSS INTERNAL FLOOR AREA 876 SQ.FT (81.4 SQ.M)



FOURTH FLOOR

**HDVA**

This floor plan has been defined by the RICS Code of Measurement. This floor plan and all others are for approximate representative purposes only and upon usage is agreed to as such by the client.

WWW: [hdvirtualart.com](http://hdvirtualart.com) | TEL: 0203.974.1567 | EMAIL: [info@hdvirtualart.com](mailto:info@hdvirtualart.com)

City  
25 Walbrook The Walbrook  
Building,  
London EC4N 8AF  
+4420 7337 4000

*Urban living, your way.*

[jll.co.uk/residential](http://jll.co.uk/residential)

© 2019 Jones Lang LaSalle IP, Inc. All rights reserved. All information contained herein is from sources deemed reliable; however, no representation or warranty is made to the accuracy thereof.

