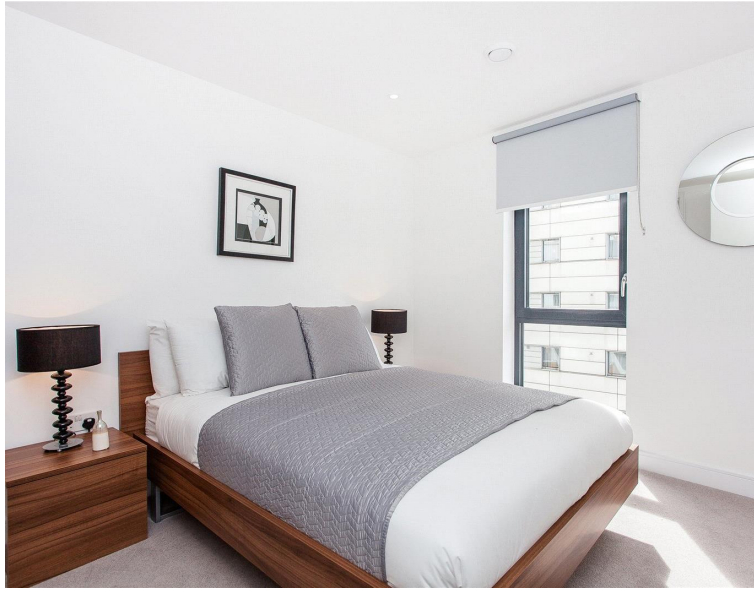


Commercial Street, London E1

Price £950 per week - Furnished







Description

A rarely available 3 bedroom apartment in the brand new Cityscape development, conveniently located from Aldgate and Aldgate East tube station and short walking distance to the City of London

This spacious luxury 3 bedroom apartment is situated on the 4th floor and offers approximately 968 sq.ft. of living space. The property comprises 3 double bedrooms with en-suite and large fitted wardrobes to master, living and dining area with fully fitted open plan kitchen, generous sized balcony looking into the landscaped gardens, contemporary bathrooms with porcelain and glass tiling and wooden flooring. The apartment benefits from floor to ceiling windows maximising natural light and views.

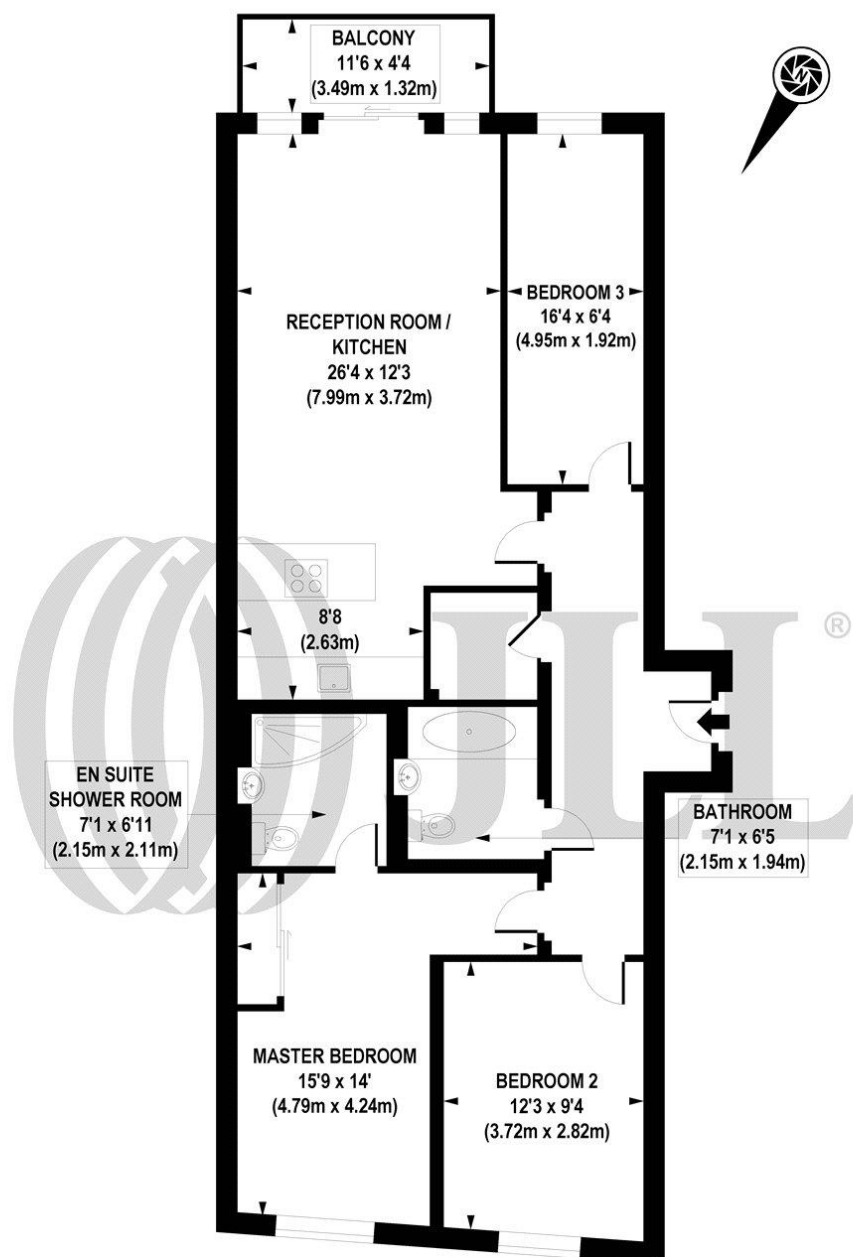
The development is situated next Aldgate East Station and a short walk from the City of London. Residents also benefit from 24 hour concierge service, on site gymnasium and communal roof terrace with stunning panoramic views of the City Skyline and Canary Wharf.

Rent is payable on a monthly basis and you may be required to pay more than a month's rent in advance, depending on your circumstances. You will be required to pay a 1 week holding de

- 3 Bedrooms
- 2 Bathrooms
- Balcony
- Open plan kitchen
- On site leisure facilities
- Communal roof gardens
- 0.1 miles from Aldgate Station
- Approx. 968 sq ft (89.9 sq m)
- Furnished
- EPC: B

Floorplan

968 sq ft | 90 sq m



FOURTH FLOOR

APPROX. GROSS INTERNAL AREA FLOOR 968 sq. ft / 89.94 sq. m

Floorplan is for illustrative purposes only and is not to scale.
Every attempt has been made to ensure the accuracy of the floorplan shown, however all measurements, fixtures, fittings and data shown are an approximate interpretation for illustrative purposes only.
Liability for errors, omissions or mis-statement through negligence or otherwise is hereby excluded.

CP CREATIVE
PROPERTY MARKETING

City
25 Walbrook The Walbrook
Building,
London EC4N 8AF
+4420 7337 4000

Urban living, your way.

jll.co.uk/residential

© 2019 Jones Lang LaSalle IP, Inc. All rights reserved. All information contained herein is from sources deemed reliable; however, no representation or warranty is made to the accuracy thereof.

