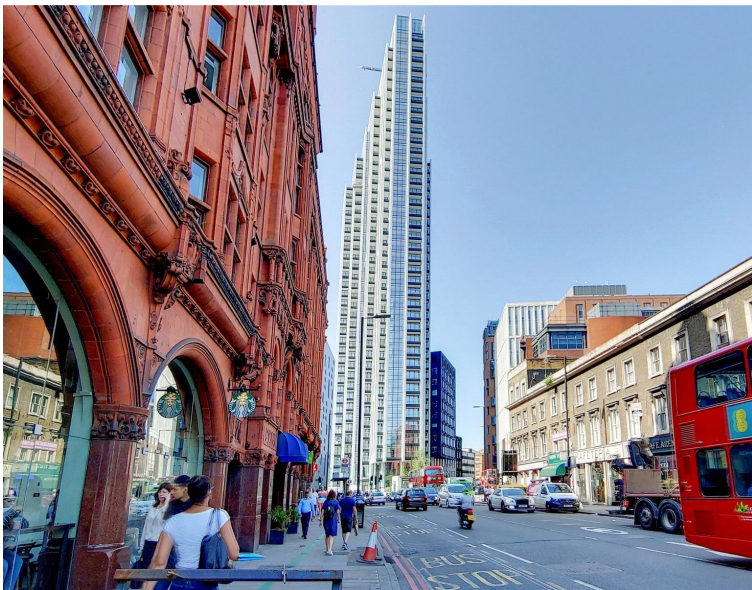
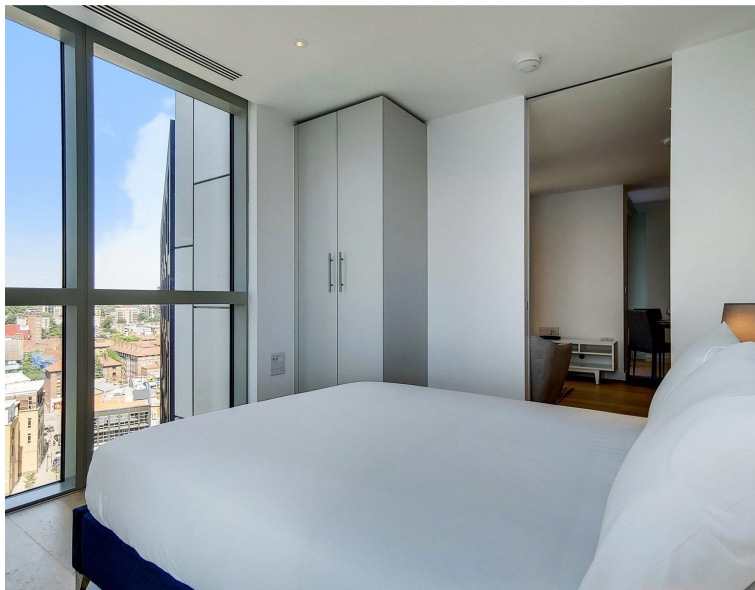
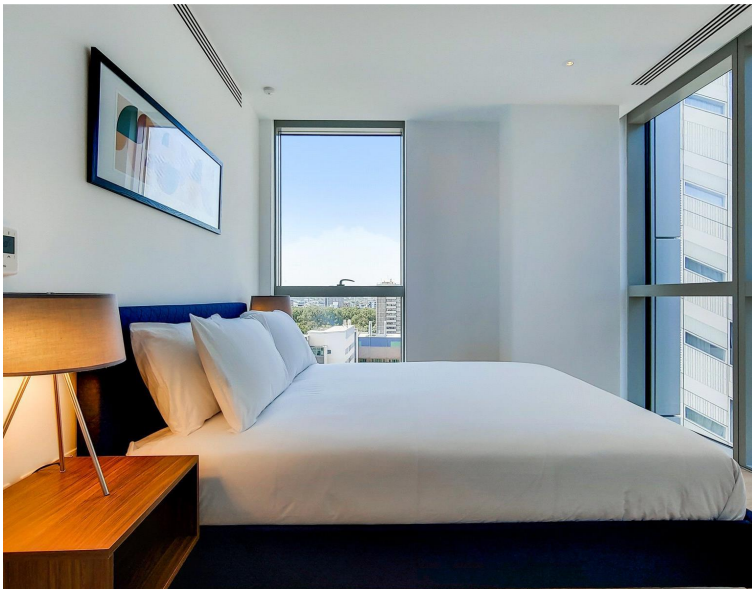


City Road, London EC1V
Price £720 per week - Unfurnished







Description

A luxury 1 bedroom apartment in the Atlas Building, Old Street, EC1.

This luxury 1 bedroom apartment boasts approximately 540 sq ft of living space. The apartment is offered fully furnished and comprises a large open plan reception with fully fitted kitchen, large East facing balcony with views towards Canary Wharf and the Olympic Park in Stratford, bedroom with large fitted wardrobe, luxury bathroom with Porcelain finish and solid wood flooring.

The Atlas Building is next to Old Street station (0.1 mile) and ideally situated for the City, Hoxton, Shoreditch and Angel. The development offers top of the range amenities which includes pool, spa, gymnasium, private cinema room, resident's only business lounge and 24 hour concierge.

We understand that cooling / heating is delivered via a communal system for which separate charges apply.

Rent is payable on a monthly basis and you may be required to pay more than a month's rent in advance, depending on your circumstances. You will be required to pay a 1 week holding deposit following a successful offer. Utility bills, council tax, tele

- 1 Bedroom
- 1 Bathroom
- Private balcony
- On-site leisure facilities including pool, spa and cinema
- 24 hour concierge
- 0.1 miles from Old Street Station
- Approx. 577 sq ft (53.7 sq m)
- Furnished
- EPC: B
- Council tax: Band E

Floorplan

577 sq ft | 54 sq m

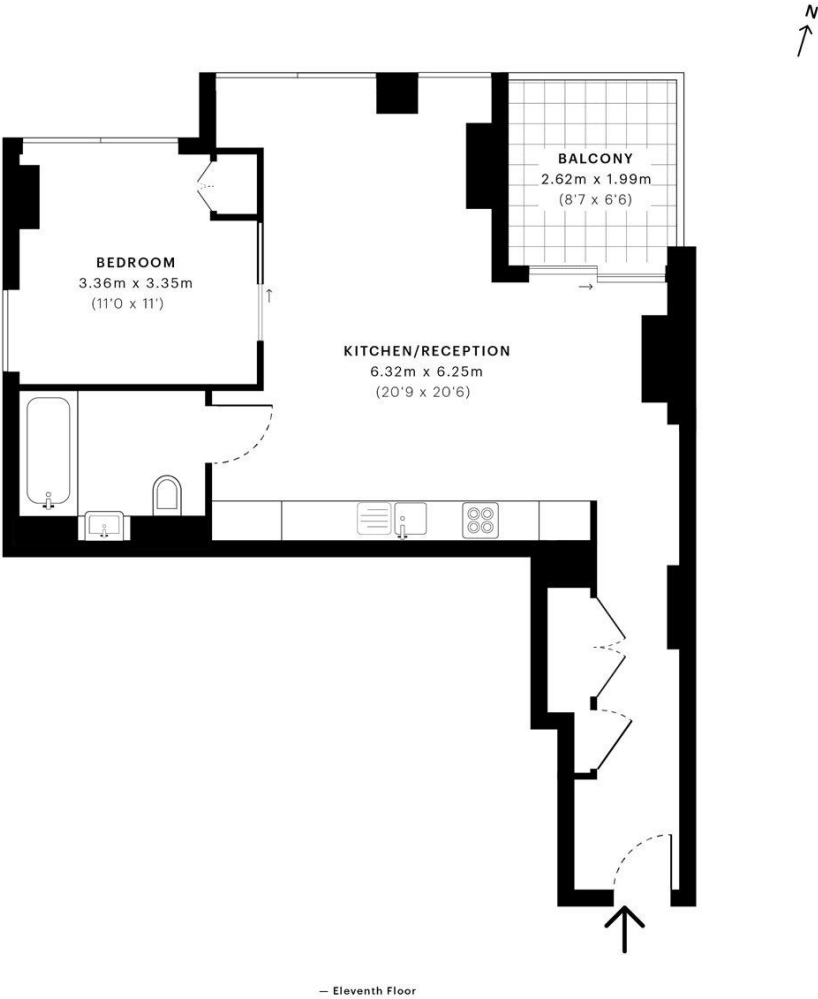


City Road, EC1V

CAPTURE DATE
23/07/2019

LASER SCAN POINTS
26,964,475

GROSS INTERNAL AREA
53.7 Sqm / 577.7 Sqft





GROSS INTERNAL AREA
The footprint of the property
53.7 Sqm / 577.7 Sqft



NET AREA (INTERNAL)
Excludes walls and external features
50.9 Sqm / 548.3 Sqft



EXTERNAL STRUCTURAL FEATURES
Balconies, terraces, verandas etc.
5.2 Sqm / 55.5 Sqft



RESTRICTED HEAD HEIGHT
Limited use area under 1.5m
0.0 Sqm / 0.0 Sqft



Spec floor plans are produced in accordance with the Royal Institution of Chartered Surveyors' Property Measurement Standards. Plots and gardens are illustrative only and are excluded from all area calculations. Due to rounding, numbers may not add up precisely.



IPMS 3B RESIDENTIAL
58.8 Sqm / 633.2 Sqft

IPMS 3C RESIDENTIAL
56.1 Sqm / 603.8 Sqft

SPEC ID
5d35c5285a0efe0a1c2c6a4a

City
25 Walbrook The Walbrook
Building,
London EC4N 8AF
+4420 7337 4000

Urban living, your way.

jll.co.uk/residential

© 2019 Jones Lang LaSalle IP, Inc. All rights reserved. All information contained herein is from sources deemed reliable; however, no representation or warranty is made to the accuracy thereof.

